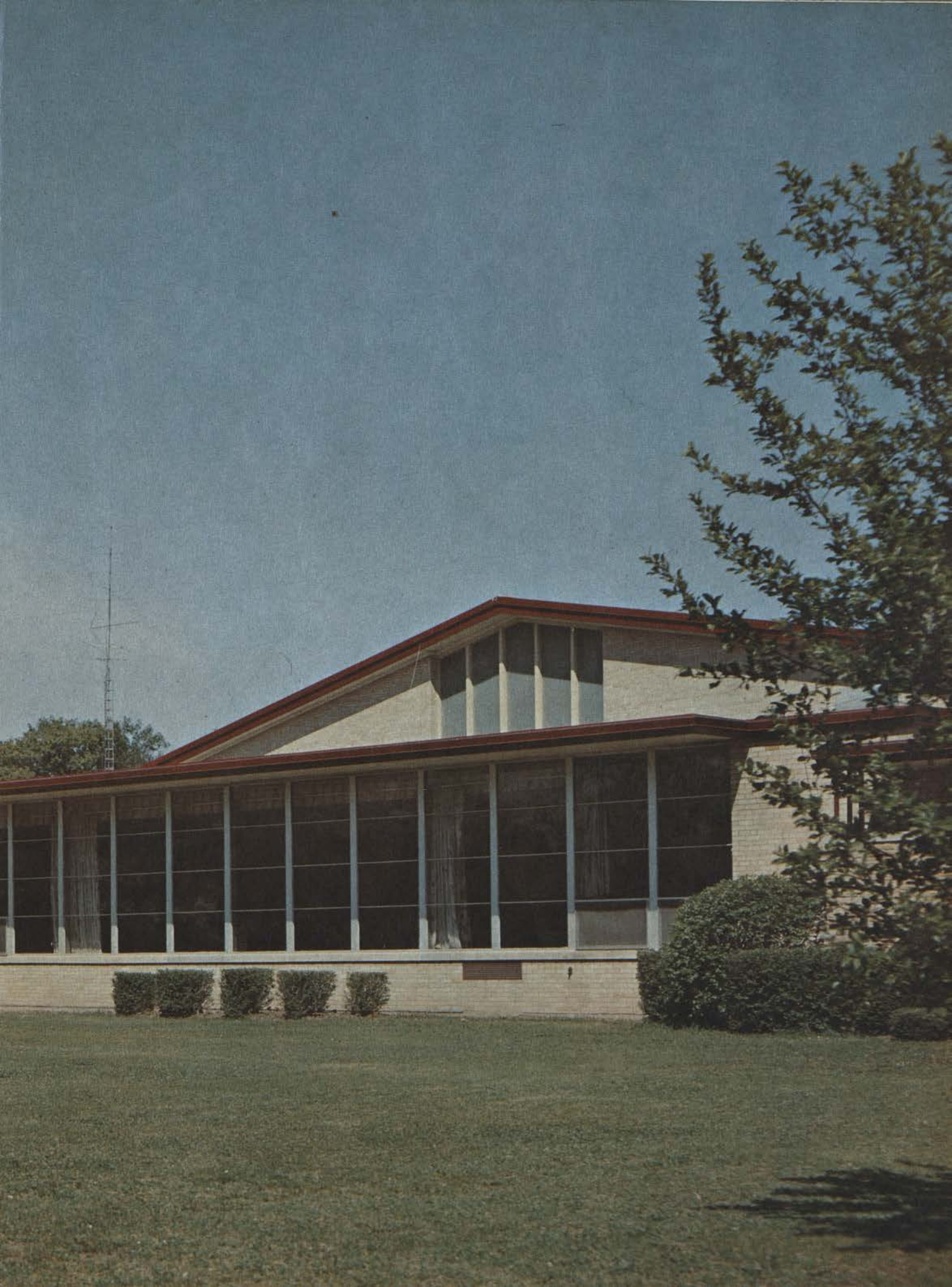




1968

ARROW







1968 ARROW

Wisconsin Dells
High School

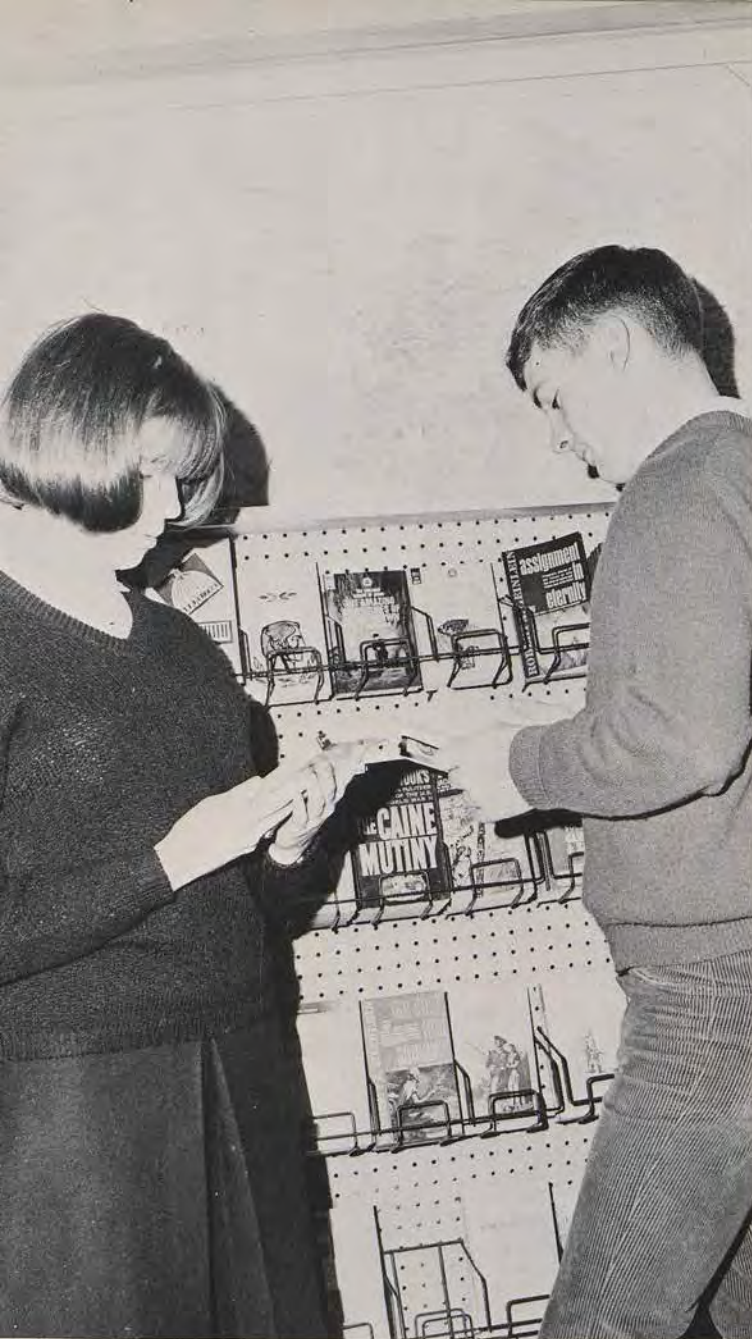
Wisconsin Dells
Wisconsin



'68 Was a Year of Change

This was a year of changes—
Some tangible, some intangible.
The addition to our building meant new
classrooms, new laboratories, new facilities.
It brought new atmosphere, improved
attitudes, new interests.
There was a change in outlook. For seniors

it meant serious thoughts about the future.
New teachers and club advisers
added freshness and variety to our activities.
This change was a healthy process.
It allowed no time for stagnation.
This year of change was
a year of growth.



and Growth

Changes in	Academics	12
	Organizations	36
	Sports	62
	School Life	78
	Underclassmen	90
	Seniors	104

'68 Was . . .

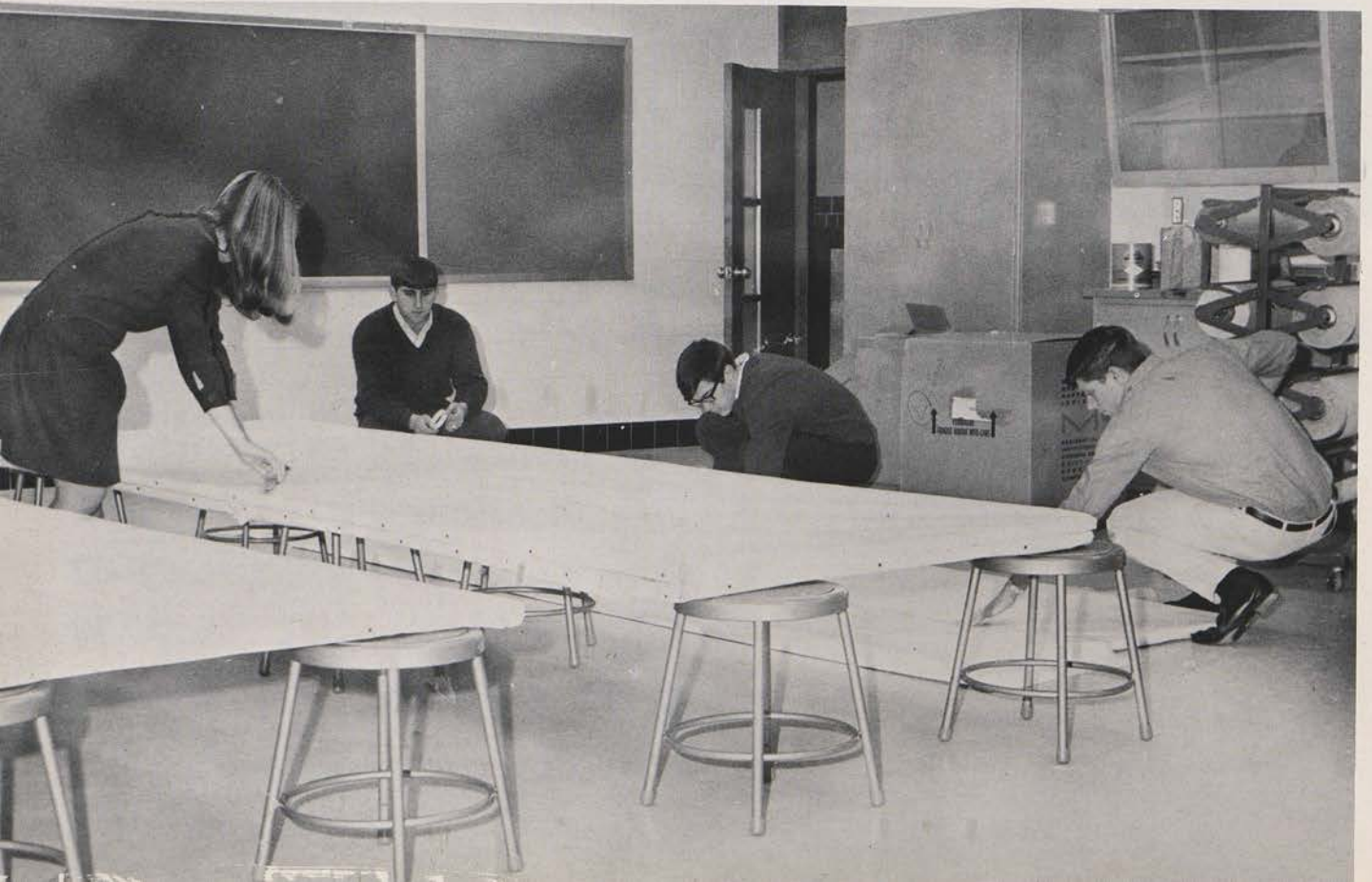


DURING THE SECOND SEMESTER, weight lifters spent much time developing their muscles. In the new weight-

A Brand New Year

IN THE SPACIOUS NEW ART ROOM, art students Karen Briggs, Howard Nelson, Scott Scheer, and Bob

Heinzelman are getting ready to paint windows to be used as background for the band and chorus Christmas Concert.





lifting room, Lester Grant spots Don Kieta as he does a "bench breast," while Steve Jones does some "arm lifts."

That's Never . . .

"BETTER LATE THAN NEVER," is Steve and Scott Scheer's motto, as they regretfully notice the new bell system.



UPON RETURNING TO CLASSES students were greeted by green plants and tall glass windows which added a new appearance to the main office.

Been Tried.

MAKE-UP DIRECTOR KATHY PENNINGTON prepares "Aunt Martha," played by Mary Lane Stanton, for the all-school play "Arsenic and Old Lace."





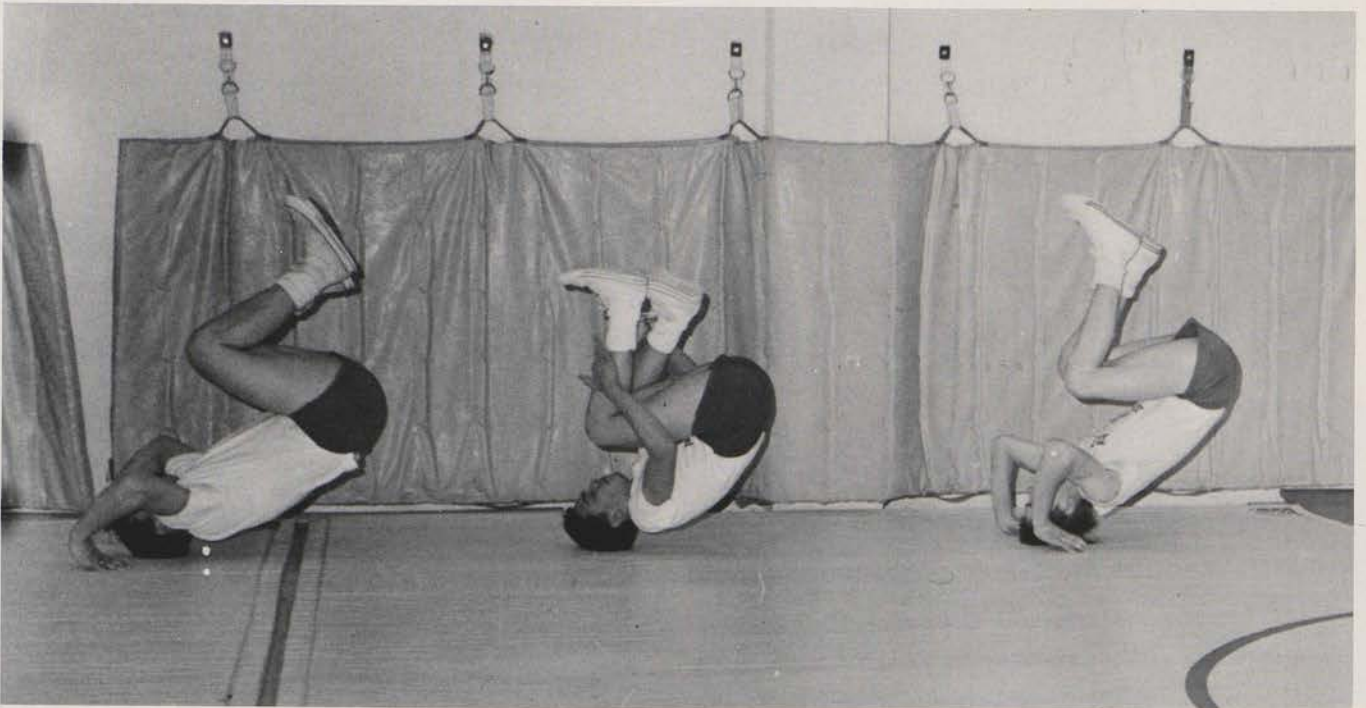
THE SPEED READER, TACHIST-O-VIEWER, tape recorder, EDL controlled reader are some of the new facilities used in the reading improvement room by Dale Rein-

hart, Chuck Pearson, Bob Geibel, Jane Kaiser, and Kay Nelson.

We Developed

DEVELOPING COORDINATION IN TUMBLING SKILLS, Jim Larson, Chris Westerfeldt, and Steve Borck

work out in the surroundings of the new tumbling and weight-lifting room.





STUDENT PHOTOGRAPHER JOE EDMONDS prepares a photographer on the easel in the new dark room.

THE CLICK OF TYPEWRITERS AND ADDING MACHINES is evidence that business education students are busy developing skills in the new office machines room.



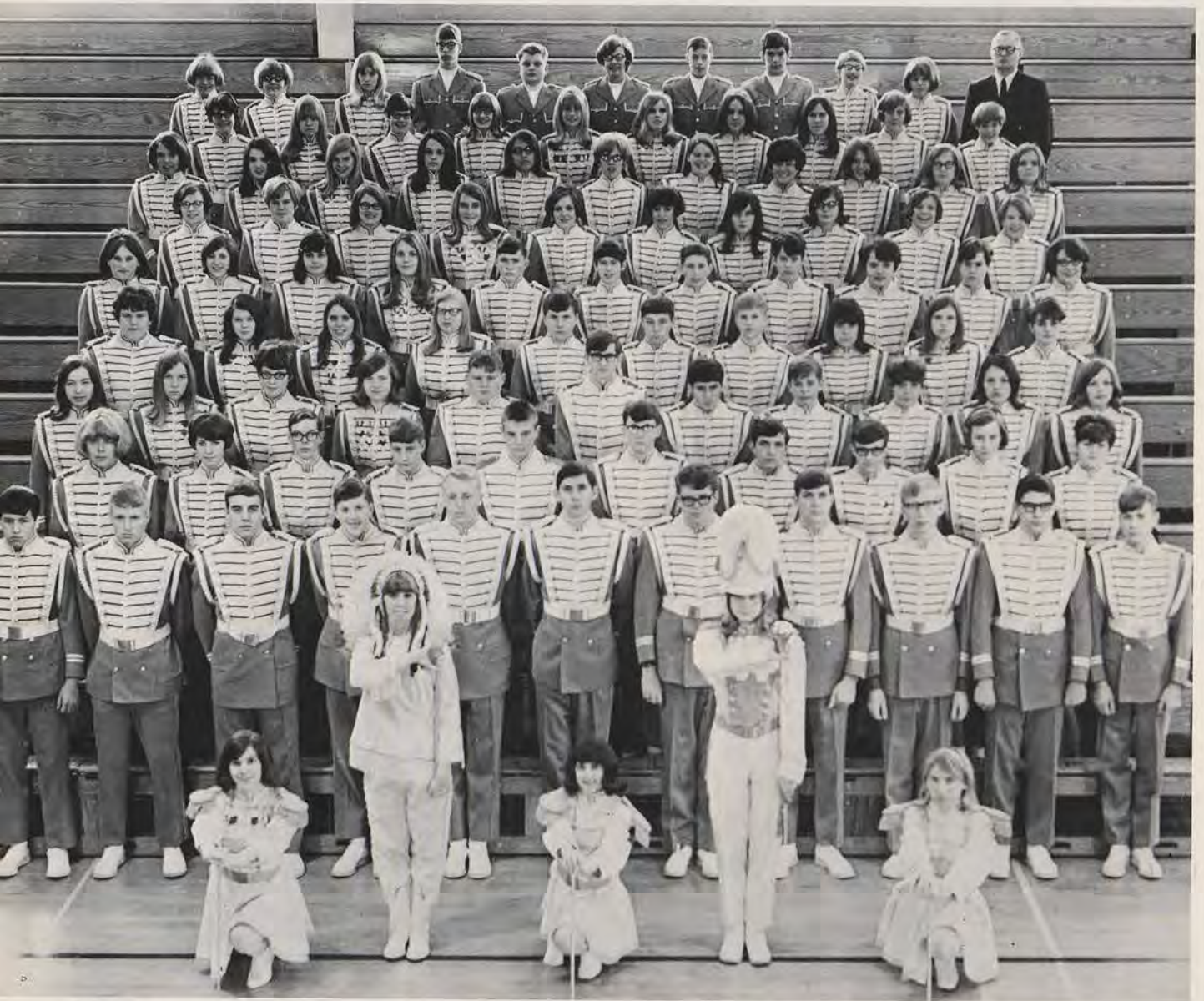
Our Skills . . .

JIM LUECK DICTATES LETTERS on the new Norelco Transcribing machine for advanced shorthand students to transcribe.



With New
Facilities.

Marching Band Makes TV Debut at Packer-



MARCHING BAND. TWIRLERS: T. Kaminski, L. Nehring, P. Reidelbach. MAJORETTES: D. Newman, L. Reese. ROW 1: R. Tallmadge, J. DeMerit, D. Gussel, B. Borchert, J. DeMerit, M. Medo, B. Wimann, S. Scheer, P. Foss, M. Schultz, T. O'Connor. ROW 2: S. O'Connell, E. Jensen, P. Jensen, L. McFaul, K. Weyh, K. Edwards, S. Scheer, B. Brown, J. Weisner, B. Zinke. ROW 3: M. Schultz, C. Follendorf, G. Weisner, B. Reese, J. Corton, B. Kaiser, T. Casey, B. Gissal, A. Meltz, B. Ryan, L. Hofmann. ROW 4: K. Lapp, L. Sheil, M. Gissal, S. Edwards, A. Platt, J. Willard, P. Helland, M. Leary, V. Tucker, C. Schilling. ROW 5: G. Kaiser, M. Kimball, S.

Reineking, K. Briggs, J. Ashline, D. Heaps, J. Utter, D. Sheil, B. Heisz, S. Donnelly, K. Kasdorf. ROW 6: D. Anderson, C. Wimann, S. Fish, B. Casey, S. Gaffney, K. Stephenson, J. Kaminski, M. Honish, P. Parchem, C. Armson. ROW 7: J. Gussel, G. Lucke, K. Helland, M. Lucke, J. Day, M. Lapp, K. Field, J. Delmore, D. Delmore, C. Wood, S. Brown. ROW 8: S. Johnson, P. Wilson, J. Weber, M. Dorow, P. Gray, P. Johnson, J. Walker, A. Simonitsch, S. Jobe, B. Reidelbach. ROW 9: G. Bork, D. Anderson, N. Skarda, J. Tollaksen, J. Ramer, L. Pierkarski, K. Nichols, T. Stewart, C. Dorow, P. Pearson, Mr. Robert Bestul, Director.

Viking Game



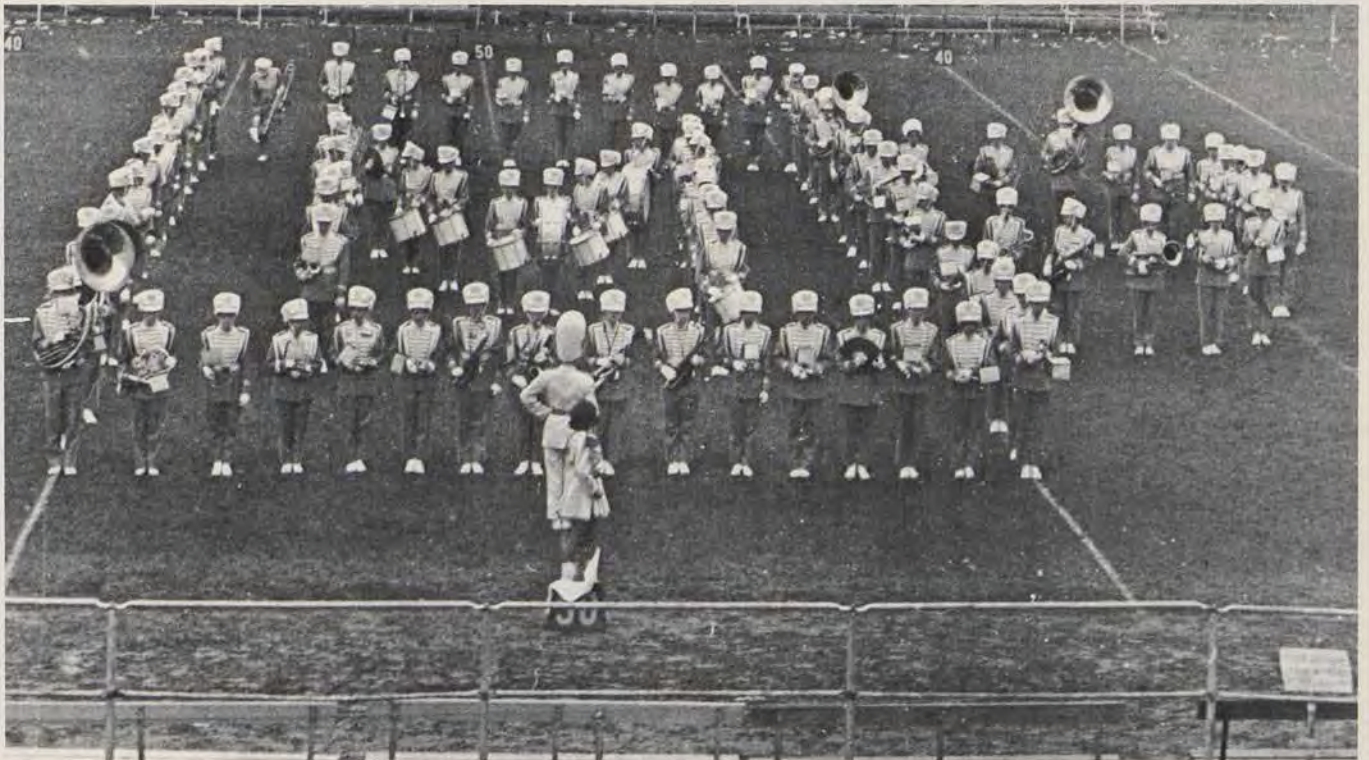
"ONLY A FEW MORE CASES AND WE ARE OFF for an overnight in Milwaukee and a performance at the Packer game," John Demerit is saying to Dave Gussel as pack their gear.



THE MARCHING CHIEFS LOOKED SHARP for their "Day with the Packers" as new hats added to the decor of their uniforms. Jane Walker tries hers for a sure fit.

"1,2,3,4,5,6,7,8. . .GUIDE RIGHT, HEADS UP, LINES STRAIGHT!" These were familiar cries heard as the Dells Marching Chiefs perfected their half time and pre-game per-

formance for the Packer game. After many long weeks of practice through rain and shine, the band holds its final rehearsal before its appearance on the TV screen.





BOARD OF EDUCATION—STANDING: Erwin Crothers, Warren Schultz, Robert Nelson, Charles Thompson.

SEATED: Gordon Foster, Clerk; Hans Helland, Director; Rueford Bork, Treasurer.

OFFICE SECRETARIES. MRS. ELEANOR PALMER keeps the attendance records and handles incoming telephone calls. MISS PHYLLIS PFISTER handles the correspondence for Mr. Fenske and Mr. Reineking. MRS. WILMA REINEKING is the accountant for the school district.

Board Expands and Remodels Facilities

American schools face growing problems of increased enrollment and accelerated programs. These must be met by new teachers, new facilities, new concepts of education in order to prepare students to take their places as citizens and leaders in today's world. With this in mind, the Board of Education, carrying out the wishes of the people in the District, authorized the \$585,000 additions to the high school and elementary school buildings.

The seven members of the Board are elected by the people for a three-year term. A new member on the Board this year is Mr. Erwin Crothers, appointed to replace Mr. Henry Murphy who resigned from the Board in the fall.

Through the years the Wisconsin Dells area has been proud of its ever-improving educational facilities. The Board of Education has been the initiating force behind the continuing high standards of the Wisconsin Dells school system.



Administrators Receive National Recognition

Mr. Robert Fenske as Superintendent of Schools has the challenging responsibility of directing school policies. Working with the Board of Education, he not only establishes the standards for a functioning curriculum, but must resolve personnel, finance, and building problems. Mr. Fenske's efforts are to implement the policies of the Board of Education in a way that would help the individual student to receive the greatest benefit from his years in our school system.

Mr. Fenske is a leader in the field of education and was this year one of four superintendents from the state of Wisconsin selected to attend the science seminar, "Frontier Thinking." This seminar, sponsored by the American Association of School Advancement of Science, was held in Washington, D.C. in October.



ROBERT W. FENSKE
Superintendent of Schools

FREDERICK C. REINEKING
High School Principal



"No two days are the same in a job like mine, and I enjoy every minute of it," is Mr. Reineking's comment about his job as Principal of Wisconsin Dells High School. Considering direct work with students during their academic and social development through high school the most important of his numerous and diverse duties, Mr. Reineking is a constant source of help and encouragement to WDHS students.

In addition to these duties, he serves as a representative of the school in community affairs and is involved in various educational and civic affairs. This year Kiwanis-International recognized his active leadership in Key Club work by naming him one of five Kiwanians to the International Committee for Key Clubs. In this capacity, he has under his jurisdiction the Key Club activities of seven of the thirty world Key Club districts.

While a great deal of his time is devoted to community service, the welfare of WDHS and its students is a dominant concern in his life.



Academics

Oh may your wisdom guide us . . .





A JUNIOR ENGLISH discussion group consisting of Georgia Weisner, Gary Fay, John Baumgarth, Bob Gavin-

ski, and Jim Schroeder are preparing oral reports on American authors, Melville, Hawthorne, Poe, and Irving.

English Department Initiates Sale of



BRAD BRADLEY. California State University at Fresno. English IV. Head dramatics coach. Department Head.

LUCILLE WRIGHT. Wisconsin State University, Oshkosh. English III. Forensics.

BECKY BYHAUG. Moorhead State College. English I. AFS Adviser. Assistant dramatics coach.



English students struggled for the right ideas for theme writing and learned to express their opinions before others during class discussions.

Freshmen and sophomores studied grammar and other fundamentals and often felt, as they worked with infinitives and gerunds, that their own English language was more difficult than a foreign language. Sophomores under Mr. Lucke had 9 weeks of classroom driver education.

Juniors studied American literature chronologically from colonial times through modern literature and became familiar with the style and works of such authors as Hawthorne, Poe, Twain, and Faulkner.

Senior English classes concentrated on developing their talents in the arts of thinking, writing, and reading analytically. The senior emphasis was on English and world literature read with an awareness of the cosmology and world view of each cultural epoch.



ENGLISH IV STUDENTS, Mike Kennedy and Dennis Van Schoyck are glad that seniors were given first choice in making selections from the new paperback books.



JIM LARSON'S BRAKE REACTION TIME is .42 of a second when he was tested on the brake reaction timer in a sophomore English class. Average time is .44 of a second.

Paperbacks

ENDORING THE MOTTO, "Let Good Reading Be Your Goal," members of the freshman English class are enjoying one of the bi-weekly periods of independent reading.



"WHO IS AT FAULT—the driver or the car?" asks Agnes Meltz, in English II class, as she conducts a question and answer discussion on the subject of highway safety.



TO IMPROVE THEIR PRONUNCIATION of Spanish words, Spanish III students, Bill Gissal, Mary Leary, Bonnie Erickson, Debra Sheil, and Lynn Moon are listening to conversations recorded by Spanish-speaking people.

LATIN II STUDENTS, Bob Gavinski, and Ginny Murray are examining a model of a Roman house to acquaint them with Roman way of life.



Study of Foreign Understanding

"DID I DO THAT RIGHT?" asked Diane Newman of Jim DeMerit after she finished declining the noun "forest" in a Latin I class.





Language Promotes of Other Cultures

Students who wanted to broaden their background with a knowledge of foreign language elected to take either Spanish or Latin. First-year Latin students discovered that many English words are direct derivatives of Latin. Reading lessons had a two-fold purpose since they served as grammar drills as well as sources of information on Roman customs and history. Latin II students concentrated on fluency of translation as they translated the works of Caesar and Virgil.

For students interested in Spanish a three-year program was offered. Spanish I stressed acquiring a basic vocabulary and learning about the customs of Spanish-speaking countries. Second-year Spanish students increased their reading and writing abilities. In Spanish III students read various Spanish novels and plays and interpreted these. Both tapes and books helped students in memorizing vocabulary and recognizing words.



EDY SANTOVENIA. University of Havana. Spanish I, II, III. Spanish Club Adviser.

HAROLD PARK. Lakeland College. Latin I, II. English 10. Freshman Class Adviser.

SPANISH I STUDENT, Kristin Thompson, is studying a phonetic chart as means of learning Spanish sounds. It will help her to pronounce Spanish words.





SENIORS ALICE BASDEN AND BILLIE PATTEN are finishing their bulletin board, "Keys to the Future," for which they received points on their social problems grade.



PREPARING FOR A MAP STUDIES TEST, Eric Grieves, Dale Rhinehart, Kaye Nelson, and Mary Luszczak study the World News of the Week which gives the news

Social Sciences Study Man's Role in Society -

INTERABANG, THE NEW PUNCTUATION MARK, is the subject of an article in "World Week," the news magazine which freshmen are required to read in social studies.



"PURL ONE, KNIT ONE," explains Kim Helland as she shows Ed Godlewski how to knit during their studies of hobbies and recreations in social problems class.





highlights for each week and brings in focus the current events.



JAN KAMINSKI IS PRESENTING to her classmates in American History a comparison between early Federalist and Republican parties.

Past, Present, Future

“Should capital punishment be abolished?” This question and many other modern problems were debated in senior Social Problems classes. Through the discussion of such social, economic, personal and political problems and through area studies, seniors obtained an idea of the world around them. Bulletin board contests gave students a chance to raise their grades through periodic judging and point awards.

Junior U.S. History classes took on new surroundings in the old chorus room. Book reports and term papers provided a means of more intensified study of certain aspects of our nation's history.

World History, an elective course, gave sophomores and seniors alike a knowledge of past events which have shaped the cultures of the world.

Freshmen studied current events and geography in Social Studies 9 classes. WORLD WEEK magazines provided secondary textbooks for the study of news in our country and foreign countries.



GORDON LEWISON. Wisconsin State University, Stevens Point. Social Problems. Senior Class Adviser. Assistant Football Coach.

DAVID LAKE. Moorehead State College. United States History, World History. Adviser, Student Council.

AL HORN. Western Michigan University. Social Studies 9, World History. Head Basketball and Baseball Coach.



Functions, Graphs, Variables Baffle

ROBERT BRIMER. Stout State University. Mathematics. Athletic Director, Golf Coach, Visual Aids, Attendance.

MATTHEW BUBON. Wisconsin State University, La-Crosse. Mathematics. Junior Class Adviser, Assistant Football Coach. Department Head.



BASIC MATH STUDENT, Sharon Gneiser, is learning to add ruler fractions by measuring line segments.

LYNN SCHULTZ, MIKE KENNEDY, RON SCHAEFFER, AND PATTY WILSON are comparing mathematical models that deal with conic sections in Math IV.



MATHEMATICS PRESENTS PROBLEMS at all times. Mr. Schauf takes time out during a busy lunch period to help Joe Edmonds with an Algebra II problem.



Mathematicians

Students at WDHS have a variety of mathematics courses in which they learn and develop their thinking and apply it to everyday living. From Basic Math through Math IV the students are challenged to display their ability in mathematics.

In Algebra they are taught the different types of existing numbers, the properties of each type and how to perform the fundamental operations on them; ultimately they solve equations in which they must use these properties of numbers.

Geometry is a "thinking student's" course, where the ability to reason pays off. Here they must use previously covered laws to make conclusions concerning plane and solid geometric figures.

Math IV is for the advanced math student who plans a career geared in some way toward mathematics.

Also covered is Basic Analytic Geometry and introduction to calculus to challenge their minds beyond the straight forward concepts of mathematics.



SURVEYORS BILL AND WALTER STECKY, Algebra II students, are using numerical trigonometry to determine the height of the flag pole.

WORKING WITH LOGARITHMS enables students to use the slide rule for mathematical calculations. Susan Rei-

neking, Mena Gray, and Tara Neubara verify numbers as they work out a problem involving multiplication.





AS THE FIRST EXPERIMENT in the new science laboratory, chemistry students are constructing molecular models.



MAURICE ZICK AND STEVE BORK, senior science students, analyze the effect of various chemicals on fibers.

TO UNDERSTAND THE DIFFERENCE between acids and bases, Tim Stewart, John Wimann, and Kris Buck are testing the properties of acids and bases in general science.



New Chemistry Lab Stimulates Interest in Science

Students, whether in general science or physics and chemistry, discovered many startling facts about themselves and the world around them. General science introduced freshman to the laws of science. In biology the living world around us was exposed to sophomores through laboratory periods and discussions.

Chemistry and physics students delved into the more complicated world of atomic structure, and the physical laws that affect us every day. As juniors and seniors worked in the new chemistry lab, the mysteries of the atom were revealed leading to understanding of changes in composition of matter. Seniors in physics class found that the study of physical laws made the understanding of machines, light, and electricity easy.

Senior science, a summation of four years of high school science, provided a review of basic scientific principles and their relationship to everyday living.



SOPHOMORE BIOLOGISTS, Donna Anderson and Larry Coon, are using microslide viewers to study plant mitosis.

PHYSICS STUDENTS, Jerry Tatera and Bob Storandt determine the period of the pendulum they have just made.



RICHARD SCHAUF. Wisconsin State University, Platteville. Basic Math, Algebra, Chemistry. Volleyball Coach. Camera Club Adviser. Department Head.



GLENN GETGEN. Wisconsin State University, Superior. Biology. Head Wrestling Coach.

PHIL GUSTAFSON. Mankato University. Physics, General Science. Sophomore class adviser.





KATHY STEPHENSON LIKES TRANSCRIBING from the Norelco transcribing machine better than from her shorthand notes.



CORRECT FINGERING TECHNIQUES are important in the rapid operation of adding machines and calculators. Renee Thundercloud, Kathy Zelner, Bob Storandt, and

BARB STROEDE AND ANDY ROEKER are getting some practical experience getting money ready for a bank deposit as they count the receipts from the Baraboo game.

New Office Machines of Business

MARCIA GOETZ IS HELPING Jim Lucke proofread the stencil he has just finished cutting for the Anti-Tuberculosis Association in Typing II class.





Ken Schweda are doing practice problems to improve their skill on these machines.

Increase Efficiency Education Department

The whirl of adding machines, the rhythmic strokes of the typewriter were signs that business education students were hard at work developing skills which would enable them to find office jobs when they graduate from high school. In elementary typing, students learned the basic techniques of typing. Typing II emphasized the use of such office machines as the Ditto, mimeograph, adding machines, and transcribing machines.

Students of elementary shorthand learned the theory of shorthand, while advanced shorthand students worked to increase speed of dictation and accuracy of transcription, learned filing rules, practiced telephone technique, and wrote letters of application. In the spring they took the State Civil Service exam for stenography.

Personal record keeping students learned to keep records for their own personal use. Bookkeeping students studied the principles of accounting which they applied as they worked on practice sets.



ORPHA REIFSTECK. Western Illinois State University. Bookkeeping, Typing, Personal Record Keeping, Organizations Account.

ELIZABETH PLENKE. University of Wisconsin. Shorthand, Typing. Adviser, Annual Staff.

CONCENTRATING ON keeping "straight strokes straight and curved strokes curved," these elementary shorthand students are starting writing practice.





GIRLS' PHY. ED. CLASSES practice shooting and rebounding in preparation for their basketball tournaments.

"RIGHT LEG UP AND LEFT LEG BACK!" shouts Mr. Kuhl. As soon as they hear this the boys in first hour Phy. Ed. know that another strenuous exercise is coming.



Physical Education Emphasizes Fitness,

"IT ONLY HURTS WHEN I SMILE," says Dave Gussel to Bruce Wimann as they struggle through a tough 20-second period of push-ups.



PETER HELLAND receives a pass from Larry Borud and dribbles the soccer ball through the "red" players in an attempt to score.





SHARON POWELL. Wisconsin State University. La-Crosse. Girls' Physical Education. Adviser, Pep Club, GAA, Cheerleaders.

FRED KUHL. University of Wisconsin. Boys' Physical Education. Head Football Coach, Assistant Wrestling Coach. Adviser, Lettermen's Club.

KAY DECORAH AND TERESA KAMINSKI learn the proper techniques of archery.



Sportmanship, Fun

Moans and groans were the results of the first few weeks of Physical Education classes. Girls were started on a rigorous routine of fitness tests. A steady progression of sports and games followed including speedball, basketball, square dancing, volleyball, archery, and track.

Push-ups, sit-ups, squat thrusts, and other power-building exercises got the boys started on Mondays and Thursdays. On Tuesdays the boys loosened up with exercises, jogged around the gym and sprinted at the blow of a whistle. The remainder of the class periods was used to participate in various team sports such as football, volleyball, soccer, and basketball. These sports stressed values of competition and the appreciation of good sportsmanship.

Physical education activities are "carry-over" activities that will enable students to enjoy and take part in them as adults.

MEMBERS OF THE ADVANCED AG CLASS, under the supervision of Mr. Weigel, examine a home fabricated rafter in their study of building structures.

AS A FAMILY LIVING BUDGETING PROJECT, Linda Hattle, Carol Beard, and Mary Kurtz visit Zinke's grocery store to check food prices.



Students Use Both Hands and Minds in

USING A NEW ELNA SEWING MACHINE, Kay Decorah and Jeanette Griffin, senior homemaking students, are practicing new techniques in clothing construction.



SOPHOMORE HOMEMAKERS, Marilyn Lapp, Kathy Anderson, Sherry Hattle are checking peaches they have just canned for color, packing, and air spaces.





Ag and Homemaking

Homemaking students, working in the pleasant surroundings of the sewing and cooking rooms, found that the classes were more fun than work. Units of study included basic nutrition, food preservation, good grooming, attractive home furnishings, personality development, dating, and marriage in addition to sewing and cooking.

Vocational agriculture is extremely complex. Mechanization and automation has eased the work but broadened the scope of necessary preparation in this field. Classes were involved in the study of livestock and crops, their production and marketing. Machinery selection, care, and repair were emphasized. Soil conservation, management, and judging were important units of the work. The boys kept up to date in the use of fertilizers and other chemicals. Much time was spent on the study of various occupations in farm-related, technical, and managerial fields and the gaining of practical experience in these fields.



BONNIE BEAUCHAINE. Stout State University. Homemaking, Family Living. Adviser, FHA Club.

FRANK WEIGEL. University of Wisconsin. Agriculture, Welding, Basic Shop, Practical Shop. Adviser, FFA Club.

FFA GROUP REPRESENTATIVE for freshmen and sophomores, Ken Nichols, is doing a research on magazines relative to agriculture.





DAN DOROW, JERRY WOLFRAM, AND DAVE KISSACK are using a torch to practice acetylene welding.

RIGHT: GEORGE GIEBLE, TERRY LEEGE, AND RANDY O'NEIL, basic shop students, assemble storage shelves for instruments in the new band room.



CHARLES SIMONITSCH. Moorhead State College. Industrial Arts, Assistant Photographer.



ED FITZGERALD AND MIKE MARSLANDER are working on the lathe, turning a leg for the bookrack they are making in advanced woods class.

Vocational Students





SOMETHING NEW IN DRAFTING—GIRLS! Vicki Harrison and Diane Kruse are working a geometric problem making arcs tangent to another arc or a straight line.



CHRIS BOSSHARD, KEN SCHWEDA, DOUG PREEZ AND DON SCHULTZ are using a plane to square the surface of the kitchen cutting boards they are making in general shop class.

Prepare for Challenges of Industrial Age



The monotonous drone of power tools served as a reminder that industrial arts classes were at work. Courses in drafting, woods, and general shop provided excellent opportunities to develop prevocational skills as well as hobbies and have a practical value for almost everyone.

Mechanical drawing emphasized drafting techniques, developed powers of visualization, and trained students to be precise. Woods classes covered the use of hand tools, wood finishings, and the wood lathe. General shop courses included work in sheet metal, leathercraft, copper tooling, electricity, and upholstery.

Basic shop, taught by Mr. Weigel, was divided into two parts. The work of the first semester involved construction and various phases of the building industry. The second semester was devoted to the care and repair of small gas engines.

Practical shop was primarily designed for learning to use tools and develop skills involved in the repair and maintenance of machinery, utilities, and buildings.



RANDY BIXBY, PAM JOHNSON, MARCIA GOETZ, AND MARY LARSON sing "Honor and Glory" as they prepare for the Chorus Clinic.



WORKING WITH CRAYONS, art student Bob Heinzelman makes a color wheel showing related and opposite colors.

Fine Arts Department Moves to Spacious

JEAN CORNING'S VOICE is recorded on tape as she does a sight-singing tryout for a place in the Chorus.



DURING THE FOURTH HOUR REHEARSAL PERIOD under the direction of Mr. Bestul, the band hears





IN THE NEW ART ROOM, Kathy Sullivan is finishing designs illustrating three different color combinations.

New Quarters

more than it ever did before because of the excellent acoustics in the new band room.



ROBERT BESTUL. Wisconsin State University. Stevens Point, Band Director. Dance Band.



RUTH ANN GUNDRUM. Alverno College. Chorus, Madrigal.

RICHARD LUCKE. Notre Dame University. Sophomore English, Art. Debate Coach.



Technical skills, performance skills and music appreciation are the three "R's" of the music department. Before either the band or chorus can give a performance, they must have good tone, tuning, breath control, and most important, a feeling for the music. In band this year, the mechanics of music were studied more closely, along with the usual private lessons and ensemble work.

In chorus Miss Gundrum added the study of modern music and private lessons to the curriculum of sight reading and ensemble work. Although both teachers worked hard to perfect technical and performance skills, their greatest satisfaction came when the student enjoyed performing.

Art students found that creativity and imagination are necessities in art class. The new art room made it possible for Mr. Lucke to introduce a more varied program. New projects introduced this year included oil painting, water colors, ceramics, clay sculpture, and leathercraft.



THE LIBRARY IS A MATERIAL CENTER where students can find information on various topics for both per-

sonal and academic needs. This information can be found in books, newspapers, magazines, film strips, and tapes.



DONALD SKARDA. University of Wisconsin. Guidance Director. Adviser, National Honor Society. MARCELLA SLOCUM. University of Wisconsin, School Librarian. Adviser, Librarian Club; Adviser, Newspaper Staff. BLANCHE BAGLEY. Wisconsin State University, Platteville. Reading Improvement. MARY KUHL. Wisconsin State University, Whitewater. Special Services.

Special Services Academic

GARY FAY is concentrating on the Preliminary Scholastic Aptitude Test. The results of this test will give him an idea of what he will do on the college admission test.



JAMES HALPRIN. University of Florida. Driver Education. Grade School Football Coach.



JANE WALKER AND SANDY STIEVE are removing the air filter to adjust the carburetor before they start a period of practice driving.

Contribute to Program

The guidance program made it possible for students to "know thyself." Counseling offered every WDHS student an opportunity to know his assets as well as his limitations so that he is prepared to meet the demands of our changing society.

The school library serves every department in school. It contributes to the total development of students and faculty by providing a wide range of books and nonbook materials from different levels of difficulty, appeal, and point of view.

The right attitude and basic skills of operating an automobile are stressed in driver education. After 9 weeks of classroom driver education, students have a 6-lesson period of behind-the-wheel driving. They are then ready to take the test for their coveted driver's license.

The reading improvement program is planned to develop independence and enjoyment in reading. Speed reading machines, film strips, tape recorders, and a complete set of Tachist-o-film programmed lessons were some of the technique devices used.



DON THOMAS, ALLAN COON, AND RICKIE HAYNES are using the Tachist-o-Flasher, the Shadowscope Speed Reader, and the Tachist-o-Viewer in the reading improvement program.

AS RICK JAHN LISTENS to a job-training tape, he follows the material in the book. This phase of the work includes income tax, banking, and working with others.

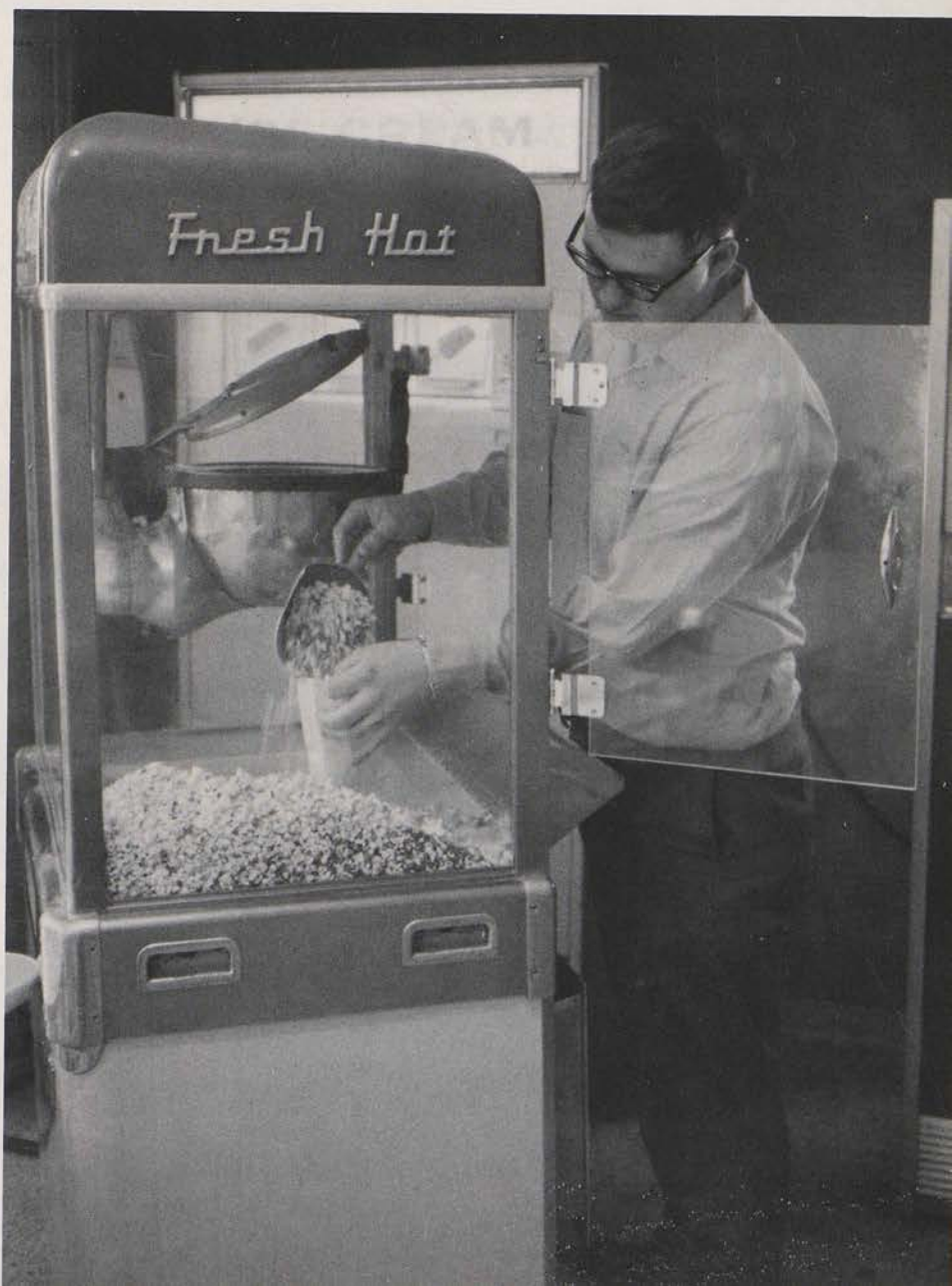




Organizations



Wisconsin Dells so glorious . . .





FRONT ROW: M. Hurley, B. Corning, L. Nehring, R. Bixby, P. Johnson, K. Buck, J. Kaleas, O. Farris, T. Turner.
ROW 2: D. Day, Joan Kaiser, J. Gussel, R. Gray, E. Dickerson, D. Kesler, S. Dickerson, B. Nagel, S. Scheer. ROW 3:

L. Piekarski, L. Reese, Z. Wickus, S. Reineking, K. Helland, J. Corning, A. Pennington, D. Krueger, D. Dunahee, S. Scheer, D. Zinke.

Chorus Participates in Baraboo

MADRIGAL SINGERS, FRONT ROW: T. Kaminski, D. Newman. ROW 2: S. Scheer, M. Goetz, B. Reese. ROW 3:

S. Lackore, S. Dickerson. ROW 4: J. Gussel, D. Zinke, D. Day.





FRONT ROW: J. Ramer, T. Greendeer, D. Newman, B. Cottine, T. Kaminski, B. Borck, D. Hamburg, L. Moon, M. Hamm. ROW 2: G. Krueger, B. Johnson, D. Anderson, Jane Kaiser, M. Goetz, K. Anderson, P. Van Deuren, V. Christen-

sen, C. Anderson. ROW 3: P. Hickethier, S. Lackore, B. Zinke, P. Hickethier, B. Reese, M. Larson, J. Kesler, M. Leary, D. Schultz, V. Dunahee.

Choral Clinic

"Ah, hear a voice a prayin' prayin' Lord." With these words, guest director, Vance George jumped off the podium and began dancing around in front of the chorus, singing all the time. The occasion was a choral clinic at Baraboo, at which four other schools participated. It was one of the highlights of the year, because Mr. George was a very exciting man, and was able to make the chorus sing enthusiastically.

That event started off the chorus' schedule of performances. They participated in the year's concerts, and ended the year with an exchange concert with Beaver Dam. In contest competition, they entered Class B.

Madrigal sang for Veteran's Day and then started practice for other concerts and contests. They worked on many types of music this year: Swingle Singers style, contemporary, movie themes, and, of course, madrigal music. Both madrigal and Triple Trio entered in Class A in district competition.

SUSAN REINEKING, ACCOMPANIST for the Mixed Chorus, also accompanies soloists and ensembles in district and state music contests.





FRONT ROW: K. Briggs, P. Gray, G. Lucke, M. Lucke, S. Gaffney. ROW 2: C. Follendorf, B. Casey, P. Johnson. ROW 3: V. Tucker, M. Dorow, K. Stephenson. ROW 4: M. Ives, K. Helland, S. Scheer, J. Weber, C. Wood, M. Kim-

ball, K. Lapp, J. Koehler, K. Kasdorf, J. Walker, T. Neubauer. ROW 5: K. Edwards, M. Machovec, P. Helland, M. Schultz, P. Jensen, J. Ramer, M. Medo. ROW 6: D. Heaps, A. Meltz, J. Delmore, N. Skarda, S. Reineking.



Concert Band Performs in Class A Competition

AN OUTSTANDING MEMBER of the Concert Band is Betsy Reese, who is a Class A soloist and won first rating at State for 3 years. She was also a member of the cornet trio at State and the All-Star group at Oshkosh State University.



FRONT ROW: M. Leary, L. Hofmann, P. Wilson, J. Weisner, D. Newman. ROW 2: D. Sheil, S. Scheer, G. Weisner. ROW 3: L. Nehring, S. Fish, L. Sheil. ROW 4: J. Kaminski, E. Jensen, L. Reese, T. Kaminski, M. Honish, R.

Tallmadge, B. Wimann, T. O'Connor, B. Borchert, J. Willard, D. Draper. ROW 5: B. Kaiser, B. Reese, J. DeMerit, T. Casey, M. Neubauer, D. Anderson, John DeMerit. ROW 6: P. Foss, D. Gussel, A. Platt, D. Delmore, Mr. R. Bestul.

Sound-off! With a blaze of brass, the Wisconsin Dells High School Marching Band stepped proudly into the field at Milwaukee County Stadium to the cheers of a capacity crowd of Packer fans. Despite the rain, the band put on a great show and with financial help from Kiwanis, Rotary, and the Lions Club of Lake Delton, they were able to spend an exciting night in Milwaukee.

This was the start of an eventful year. A new carpeted band room was completed, with architecture and equipment to help both bands develop

into fine performing groups. Through many hours of hard rehearsing, the band prepared for its four major concerts—the Fall Concert, the Christmas Concert, the Spring Concert, and the Stand Rock Concert.

As the year ended, it saw our high school acting as host for the district solo and ensemble and band festival contests. The band again entered Class A, and upheld the school's reputation of having a fine music department.



FRONT ROW: B. Ryan, P. Pearson, C. Palmer, D. Draper, D. Anderson, L. Ives, K. Helland, P. Wilson, K. Brown, V. Christensen, C. Lueck. ROW 2: J. Hamm, S. Johnson, T. Wolfram, D. Honish, D. Stowers, E. Dickerson, M. Simonitsch, S. Reidelbach, M. Jobe, S. Weber, G. Guildner, T. Wampler, L. McFaul, K. Coon, C. Schilling, S. Edwards, R.

Tallmadge. ROW 3: (Seated left) J. Ashline, S. Donnelly, B. Reidelbach, (Right) S. O'Connell, G. Bork, S. Pfister, D. Schultz, J. Gussel. ROW 4: C. Armson, M. Zapuchlak, J. Day, D. Joyce, J. Dittrich, B. Zinke, T. Rodwell, M. Lapp, C. Wimann, S. Wood, K. Weyh.

Dance Band Receives Praise at State Teachers'

DANCE BAND. FRONT ROW: J. Demerit, B. Brown, L. Piekarski, M. Gissal, L. Sheil, M. Schultz, T. Kaminski, S. Fish, L. Nehring. ROW 2: Pianist P. Johnson, S. Reineking,

D. Delmore, D. Newman, J. Corton, P. Jensen, B. Kaiser, B. Reese, B. Borchert, D. Draper, J. Willard.





K. Nichols, E. Edmonds, S. Kaminski, L. Accola, L. Piekarski, B. Brown, C. Rubado, J. Kaleas, J. Tollaksen, T. Stewart, B. Heisz. BACK ROW: B. Gissal, M. Avery, G. Kaiser, A. Simonitsch, P. Parchem, J. Utter, M. Hamm, B. Olson, J. Ramer, B. Zinke, Mr. Robert Bestul.

Convention

The Junior Varsity Band started out the year by marching in football shows. Some of the JV's were included in the band for the Packer show. They received new uniforms which added to their appearance. Under Mr. Bestul's guiding hand, they entered in Class C. competition.

The twirlers and majorettes added much to the appearance of both bands in parades and on the football field. They were specially featured in the Packer game, as the cameras often focused on them.

Dance Band's big event for the year occurred when it performed for the fall Teacher's convention. They had been asked to play favorite hits of the Swing Era, and their performance was highly praised by many music teachers. The band also performed for the grade school's annual Valentine's Dance, Cabaret, and the Winter Semi-Formal.



HIGHSTEPPING MAJORETTES, Diana Newman and Lisa Reese skillfully led the marching band through their drills.

THE FLASHING SMILES AND BATONS of twirlers Teresa Kaminski, Linda Nehring, and Patty Reidlebach added color to the marching band.





FRONT ROW: M. Baggot, B. Olson, B. Gissal, V. Christianson, S. Weber. ROW 2: J. Baumgarth, M. Leary, B. Reese, L. Sheil, Secretary-Treasurer; D. Kruse. ROW 3: A.

Meltz, J. Tatera, Vice-President; D. Zinke, President; B. Brown, V. Harrison.

Student Council Revises Old Regulations

STUDENT COUNCIL president Dave Zinke and Mr. Reinking confer over Student Council proposals.



After young politicians made their bids for election to the Student Council, the faculty met and selected two more representatives from each class. The Council was ready to start the year's activities. Under the direction of the adviser, Mr. David Lake, and the president David Zinke, the Council started the year's activities with the planning of all Homecoming activities. Other items of business of the Council were planning the dance schedule, decorating the school Christmas tree, and sponsoring the Family Fun Fair, which helped finance our foreign exchange student.

Serving as a channel of communication between the student body and the administration, the Council discussed dress regulation and various suggestions and complaints from the student body. It offered solutions to the administrative personnel for final consideration.

'67 Marks Twelfth Year of Key Club School and Community Service

Working to carry out this year's International theme, "Understanding through Involvement," the active Key Club members undertook a number of projects. They provided valuable assistance for the Red Cross during the Bloodmobile Drive. The entire club also helped the custodians move the equipment from the old Special Service room to its new location in the new addition. Christmas was made brighter for needy families in the area by the baskets which were prepared and distributed by the Kiwanis and Key Club.

The boys were familiar sights at the athletic contests where they distributed programs and held ropes at intermission time. The club also awarded a \$100 scholarship to an outstanding senior at the end of the year. Selection was made on the basis of mental abilities, leadership qualifications, character, morals and financial need. Key Club activities were directed by Mr. Reineking, adviser.

LENDING A HELPING HAND, Key Clubber, Jerry Tatera helps out at the Kiwanis auction on Maxwell Street day.



FRONT ROW: J. Schroeder, M. Horkan, D. Kissack, G. Bopp, S. Ennis, M. Marslender, T. Joyce. ROW 2: J. Baumgarth, S. Dickerson, P. Mitchell, J. DeMerit, S.

Scheer, E. O'Brien, Secretary; J. Grey. ROW 3: P. Hickethier, J. Tatera, Vice-President; M. Medo, President; S. Scheer, B. Storandt, Treasurer; D. Van Wie.





FRONT ROW: R. Bixby, T. Neubauer, D. Delmore, S. Brown, C. Wood, D. Sweeny. ROW 2: R. Thundercloud, J. Kaminski, D. Kruse, Editor; V. Harrison, M. Leary, S. Stieve, J. Anderson, Editor. ROW 3: J. Delmore, M.

Honish, A. Meltz, G. Weisner, L. Hattle, L. Reese, S. Fish. ROW 4: P. Erickson, M. Stanton, D. Knox, A. Hein, R. Palmer, G. Lytle, D. Sheil, B. Heisz.

Chieftain Presents Cross-Section of Life at WDHS

CHIEFTAIN CO-EDITORS, Diana Kruse and Jane Anderson are editing copy for their weekly deadline.



"Your job is to present a lively, accurate, and interesting record of the week's activities." Each newspaper staff member had a well-developed nose for news and was busy every week of the school year meeting this challenge from their new advisor, Mrs. Marcella Slocum.

With weekly deadlines to meet, reporters and editors met every 6th period to plan news coverage, make picture assignments to staff photographers, adjust story lengths, write eye-catching headlines, and plan page layouts.

Co-editors, Jane Anderson and Diana Kruse, decided on stories to be written for each issue, planned special features, studied other school papers for ideas, and made story assignments. Sports editors, Dennis Sweeney and Jane Anderson, covered and reported on all athletic events.

Besides working hard, the Chieftain Staff had fun, too. They held a Christmas party and an outing this spring.



FRONT ROW: E. O'Brien, G. Coon, K. Pennington, Editor; D. Kruse, G. Murray, P. Erickson. ROW 2: P. Mitchell, L. Sheil, M. Lebica, Editor; M. Larson, B. Reese, J.

Corning. ROW 3: S. Dickerson, D. Knox, M. Medo, K. Zelner, J. Grey.

Arrow Staff Attends Workshop at La Crosse

"The first deadline was murder, but we did it!" The 1968 Arrow Staff breathed a sigh of relief as they sent in the last pages of hard work to their new publisher. Near-panic and worry, but also satisfaction overtook the entire staff as the year progressed and each deadline was met.

Members of the staff traveled to La Crosse's

Logan High School early last fall to attend a workshop sponsored by Inter-Collegiate Press. Here the staff learned the basics of a good yearbook.

Staff members worked in the surroundings of their own room in the new addition, with adviser Mrs. Plenke.

CROPPING PICTURES and making lay-outs were major jobs for co-editors Mary Lebica and Kathy Pennington.

GLORIA COON, JEAN CORNING, Betsy Reese, Jim Gray, and Peggy Erickson work busily in the new annual room.





SEATED: Gustavo Bopp. ROW 1: T. Hagen, P. Reidelbach, L. Bender, J. Baryenbruch, T. Neubauer, M. Kelley, S. Brown, P. Johnson, J. Walker, P. Gray, C. Wood. ROW 2: C. D'Angelo, G. Lucke, K. Stephenson, J. Anderson, President; K. Field, S. Stieve, D. Kruse, Secretary; V.

Harrison, M. Cassidy, T. Kaminski. ROW 3: K. Helland, M. Goetz, J. Day, B. Casey, L. Sheil, K. Briggs, S. Dickerson, Town Council Representative; G. Fay, M. Adams. ROW 4: M. Gill, S. Reineking, M. Gissal, B. Kaiser, D. Knox, S. O'Connell, G. Weisner, J. Kaminski.

WD American Field Service Sponsors

COUNTING MONEY from the candy machine was one of the jobs of AFS treasurer, Agnes Meltz.



WDHS spent another year of international togetherness. One of our students went to Peru, and a student from Chile came to spend a year at the Dells.

Although Gustavo Bopp found being a senior in our high school much different from his life in Chile, he entered into the activities of WDHS with enthusiasm. Upon finishing high school "Gus" plans to further his education at a university where he will major in chemical engineering.

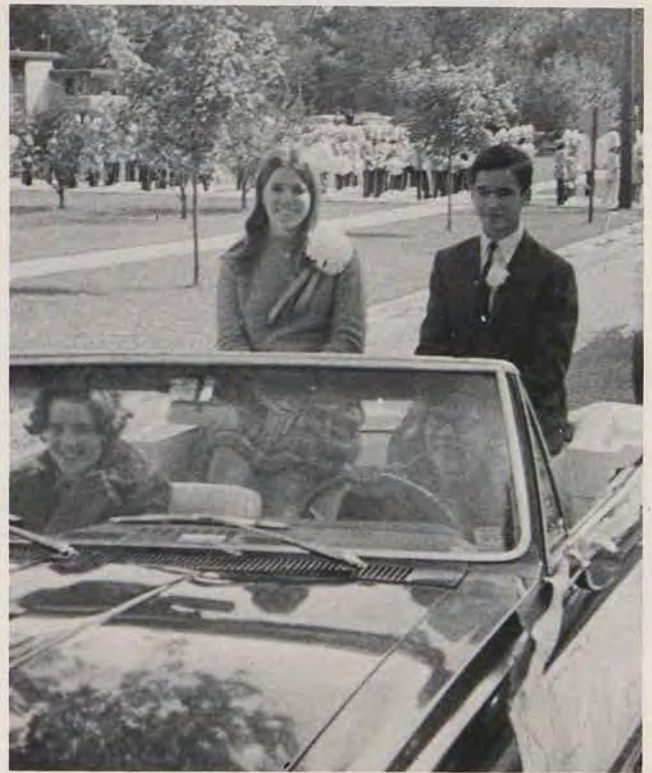
Destination Peru! Mary Gissal spent the past summer in Lima, Peru. Mary was a part of the Summer Abroad Program and is also a member of the high school AFS club.

Active programs for the AFS included a birthday party for "Gus", a Christmas party, a spring outing, and an area tea. The AFS held monthly meetings at which they frequently were entertained by guest speakers from other schools.

This year the club worked to establish a greater degree of cooperation between the high school AFS and the adult committee interested in the American Field Service Program.



"GUS" AND HIS AMERICAN "BROTHER," Pete Helland carry out the daily duty of the AFS, filling the candy machine.



MARY GISSAL AND GUSTAVO BOPP, Cheiftains ambassadors, represent the AFS in the Homecoming parade.

"Chief" in Peru

FRONT ROW: R. Bixby, S. Reidelbach, J. Farris, M. Machovec, B. Reidelbach, P. Pearson, J. Bork. ROW 2: P. Helland, B. Gissal, J. Field, M. Leary, E. Dickerson, C. Palmer, S. Pfister, M. Avery. ROW 3: J. Knox, C. Schill-

ing, G. Kaiser, A. Meltz, Treasurer; D. Kalamarz, L. Van Wie, S. Fish, M. Lucke. ROW 4: K. Thompson, K. Helland, S. Hattle, G. Lytle, A. Hein, J. Weisner, D. Sheil, B. Heisz.





FRONT ROW: T. Kaminski, J. Walker, T. Neubauer, P. Gray, D. Kruse, C. Wood. ROW 2: J. Kaminski, D. Newman, D. Kessler, S. Reineking, K. Helland, G. Lucke. ROW

3: K. Pennington, K. Briggs, M. Gissal, L. Sheil, M. Larson, R. Wagner. ROW 4: J. Baumgarth, E. Jensen, J. Tatera, M. Medo, B. Storandt, S. Dickerson.

CSLS Are Qualities of National Honor Society

Scholarship, leadership, character, and service are the qualities considered for selection to the National Honor Society. This year five seniors and five juniors were inducted into the society.

Two activities carried out by NHS are keeping the announcement case and the "Chiefs in the Spotlight" up to date. The twenty-four members took their annual field trip this spring. Mr. D. Skarda acted as NHS adviser.

SENIOR NHS MEMBERS, Mike Medo, Sam Dickerson, Bob Storandt, and Jerry Tatera light the candles of scholarship, leadership, character, and service.



MIKE MEDO posts pictures of Band at Milwaukee for "Chiefs in the Spotlight."





FRONT ROW: T. Hagen, D. Fitzgerald, B. Gissal, J. Day. ROW 2: S. Dickerson, S. O'Connell, D. Knox, J. Edmonds.

Debaters Argue Pro's and Con's of Criminal Investigation

DEBATERS, JOE EDMONDS AND BILL GISSAL gather material in the library to support their contentions for the following day's tournament.

"Resolved: That Congress should establish uniform regulations to control criminal investigation procedures" was the center of fevered arguments and tediously developed cases for our debaters this year. The question was, of course, an excellent opportunity for debaters to explore the complexities of the law and demonstrate their logic.

During many of the days before the debate tournaments actually began, the most likely place to look for a debater was in the library where he was gathering material to support his contentions.

The night before a big tournament would usually find partners "burning the midnight oil" in a last attempt to hammer out an effective brief utilizing logic and evidence.

The debate squad started the season with the invitational debate in November at Madison. Throughout the season debate tournaments were held with schools in the Whitewater District. Mr. R. Lucke acted as Debate adviser.





MARIE GARTON IS ARRANGING A DISPLAY of the Christmas candles FHA members sold as a money-making project.



GLORIA COON AND BETTY ELLIOT write place cards in preparation for the FFA-FHA Parents' Banquet.

Future Homemakers Visit World Food Exposition

The homemaker is the foundation on which the family, the basic unit of our society rests. She has the responsibility of preparing her family for its part in the world. FHA, with Miss Beauchaine, adviser, was designed to teach girls the intricacies of this responsibility. It not only continued with that taught in home economics classes, but broadened it.

Since the club decided to participate no longer in the national organization, less emphasis was placed on that program of work. The traditional FFA-FHA banquet was held along with many other interesting activities. In addition, money-making projects were carried out to finance a week-end trip to a place of interest in the home-making field.

FRONT ROW: S. Hammerly, S. Elliott, K. Decorah, R. Thundercloud, C. Beard, M. Kelly, V. Gaffney, M. Lenzendorf, T. Kaminski, K. Zelner. ROW 2: B. Elliott, President; M. Jobe, M. Dorow, D. Bressler, C. Dorow, P. Pearson, J. Farris, L. Stanke, J. Neises. ROW 3: M.

Dinegan, M. Machovec, J. Hilliard, M. Lowe, O. Dunahee, S. Evans, M. Lapp, K. Buck, J. Howley. ROW 4: G. Coon, Vice-President; M. Goetz, K. Fischer, M. Larson, Secretary; D. Sobojsinski, D. Huffman, M. Walker, V. Dunahee, M. Ginther.





FRONT ROW: C. Rhinehart, P. Mitchell, President; T. Jobe, B. Storandt, Vice-President; J. Buck, J. Coon, Treasurer; T. Schweda, T. Joyce, Secretary; M. Gasser. ROW 2: J. Ashline, J. Ramer, B. Giebel, J. Rhinehart, L. Murray, B. Hartman, G. Stroede, D. Schweda, K. Nichols, J.

Stroede. ROW 3: D. Rhinehart, L. Borud, B. Johnston, C. Holton, K. Page, K. Brown, K. Holderman, A. Platt, J. Payne, J. Ashline, P. Coon. ROW 4: M. Reid, S. Larson, J. Larson, F. Weidling, G. Huffman, L. Peterson, M. Gaffney, T. Gaffney, T. Wampler, M. Schweda.

FFA Represents State in National Contest

JOHN BUCK is studying soil samples in preparation for the state land judging contest. John placed first in the state, receiving 386 points out of a possible 400.



Active at the county, state and national levels, the WD chapter of the Future Farmers of America received well-deserved recognition for their fine work. John Buck placed first in the state land judging contest and led his team to second place in the state. The land judging team, made up of John Buck, Bob Storandt, Joe Coon, and Pat Mitchell, was one of the two teams to represent Wisconsin in the national contest in Oklahoma City in May. In the county conservation contest, Bob Storandt placed first, and Pat Mitchell placed third.

In the spring FFA members, under the direction of their adviser, Mr. Weigel, participated in the cattle, livestock, and meat judging contests held at the University of Wisconsin.

Farm programs, social meetings such as the FFA-FHA parent banquet, community service activities, and the State Convention at Green Lake kept the members busy throughout the year.



FRONT ROW: M. Hurley, S. Johnson, B. Baum, L. Ives, V. Christensen, L. Piekarski, C. D'Angelo, P. Pearson, J. Bork. ROW 2: A. Simonitsch, M. Neubauer, M. Kimball, K. Thompson, L. Van Wie, B. Erickson, M. Leary, Secretary-Treasurer; S. Fish, T. Neubauer, Vice-President; P.

Gray. ROW 3: E. Dickerson, S. Joyce, K. Helland, M. Ives, A. Meltz, D. Sheil, G. Murray, C. Lueck, S. Flaminio. ROW 4: M. Gill, J. Knox, G. Lytle, R. Schultz, G. Fay, B. Gissal, S. Reineking, President.

Spanish Club Sponsors Spring Fiesta

DRESSED IN NATIVE SPANISH COSTUMES, Spanish Club members Mary Gissal and Mary Leary are making tortillas for a club meeting.



"Hola" was the greeting that was often exchanged between the 37 members of the Spanish Club and their adviser, Mrs. Edy Santovenia. During the monthly meetings, club members became acquainted with the customs and countries of Spanish speaking people.

To carry out the purpose of the club, "to give an opportunity for pleasurable learning about the Spanish," various club projects were undertaken. Important activities during the year were the Pre-Lenten "Carnaval," singing Spanish carols on the Twelfth Day of Christmas, and a trip to Chicago to visit the Pan-American Film Festival, where members saw Spanish movies and ate in a Spanish restaurant. Dues and a very successful bake sale on Maxwell Street Day financed the trip to Chicago.

Speakers at the regular monthly meetings included Gustavo Bopp, AFS student from Chile, and Mary Gissal, our AFS student to Peru.



FRONT ROW: T. Neubauer, J. Baryenbruch, Treasurer; M. Stanton, President; J. Howley, M. Kelley, T. Hagen. ROW 2: C. D'Angelo, Vice-President, D. Platt, L. Hattle,

C. Armson, J. Farris, B. Stroede. ROW 3: M. Gill, L. Schultz, C. Wimann, L. Beard, D. Giebel, D. Kruse, Secretary.

Librarians Work in Fascinating World of Books

The Library Club is both a social and a service club. Student librarians were ready to help any student in finding the information he needed. Librarians worked for one hour each day in the school library. Their duties included charging out books and arranging them on the shelves, typing cards and lists, preparing books for cataloging, clipping magazines, sorting mail, and suggesting additional books. When the new audio-visual aids

room opened, the girls typed extra catalogue cards for the materials, which were available to faculty members for use in the classroom.

The girls and their adviser, Mrs. Marcella Slocum enjoyed both a Christmas and a Valentine's party. Money was raised through dues and bake sales to finance a spring trip through Madison's new public library.

STUDENT LIBRARIAN MAGGIE KELLEY is helping Patty Lowe find a magazine she needs for a research paper.



JANE BARYENBRUCH AND BARB STROEDE check film strips which are shelved in the library for faculty use.





FRONT ROW: G. Bopp, J. Willard, E. O'Brien, Treasurer; R. Schultz, T. Jobe, G. Fay, M. Adams. ROW 2: S. Dickerson, G. Lucke, K. Helland, L. Sheil, M. Larson, E. Jen-

sen, K. Lapp, D. Newman, T. Brenson. ROW 3: D. Knox, J. Tatera, President; D. Zinke, M. Medo, Secretary; B. Kaiser, K. Schweda, P. Van Deuren, K. Hagen.

Chess Club Attracts Analytical Minds

A new vocabulary including such terms as "checkmate, pawn, and bishop" developed as members of the newest WDHS club increased their skill in the popular game of chess. The club met every Monday evening from seven o'clock until exhaustion. Chess enthusiasts were often found in

a huddle over a chess board during the noon hours.

To carry out the purpose of the club, that of furthering worthwhile recreational pursuits and sharpening the mental processes, throughout the year members matched skills with teams from other area schools.

CHESS ENTHUSIAST Richard Schultz maneuvered his Rook across the board as Paula Van Deuren formulated her defensive reply.

SAM DICKERSON demonstrates to beginners the techniques of Chess during the first meeting of the newly organized Club.





FRONT ROW: B. Casey, K. Stephenson, L. Sheil, D. Delmore, S. Johnson, P. Johnson, G. Lucke, J. Walker, P. Gray, D. Volkey. ROW 2: V. Christensen, D. Draper, C. Zahina, K. Helland, S. Joyce, M. Kelley, J. Baryenbruch, M. Dorow, D. Hamburg, Vice-President; L. Bender. ROW 3: S. Flaminio, M. Zapuchlak, M. Delmore, J. Dittrich, L.

Piekarski, S. Reidelbach, K. Field, J. Hammerly, M. Goetz, M. Ives, L. Schultz, P. Van Deuren, President. ROW 4: J. Delmore, Treasurer; M. Stanton, K. Helland, D. Schultz, S. Reineking, K. Kasdorf, M. Leary, D. Platt, V. Harrison, Secretary; K. Briggs, M. Gissal.

Pep Club Activities Boost School Spirit

Working with the cheerleaders in an effort to boost school spirit, Pep Club members made victory signs, pom poms, and learned cheers to back the teams.

At four o'clock Homecoming morning, sleepy-eyed Pep Club girls armed with flags, posters, and

good-luck signs, walked through the silent streets to decorate the players' and coaches' houses.

Throughout the year the girls had bake sales to make money for their various activities. Mrs. Powell acted as adviser for the club.

HUSTLE, HUSTLE, HUSTLE! Busy Pep Club members Paula Van Deuren, Ginna Lucke, and Sue Johnson decorate Coach Kuhl's house on Homecoming morning.

PEP CLUB MEMBERS, Kathy Kasdorf, Linda Sheil, Paula Van Deuren, Debbi Hamburg and Sharon Reidelbach put up Victory signs before the football game against Baraboo.





FRONT ROW: C. Zahina, P. Wilson, J. Delmore, T. Kaminski, R. Thundercloud, B. Stroede. ROW 2: G. Lucke, G. Coon, K. Helland, K. Stephenson, B. Garvin, G. Richter, K. Decorah, C. Beard. ROW 3: M. Stanton, D. Day, B.

Casey, Treasurer; L. Schultz, P. Erickson, M. Garton, O. Sine, J. Neises. ROW 4: L. Sheil, M. Gissal, K. Briggs, E. Jensen, Secretary; K. Zelner, M. Kurtz, M. Lebica, Point Secretary; K. Pennington, President.

GAA Boasts Largest Membership

SENIOR GAA MEMBERS, Kathy Pennington, Patty Wilson, Mary Gissal, Judi Neises, and Barb Casey, make mums to sell at the Homecoming game.



As the largest organization at WDHS, the Girls' Athletic Association permitted girls to participate in valuable intramural sports outside of Phy. Ed. classes. Girls began in the fall by organizing bowling teams and competing for trophies awarded at the bowling banquet.

November saw the beginning of the basketball season and volleyball began in March. Every Thursday night, from 7:00 p.m. to 9:00 p.m. teams once again competed in tournaments to determine the champions in each sport. Softball was the sport pursued this spring.

After Christmas vacation a committee composed of the officers and a representative from each class met to revise the old constitution. Stricter membership requirements were the main objects of change. Through GAA activities, the girls earned points toward a progression of awards including chevrons, numerals, letters, sweaters, and GAA pins.



PAINTING WINDOWS for Homecoming is one of GAA's traditional activities. Kathy Kasdorf, Jeanine Grefe, and Anne Pennington think "Chiefs Are Gr-r-reat!"



GAA OFFICERS and Maria Ives, Pam Hickethier, and Jacki Weber, met to revise the constitution to meet the demands of an increasing membership.

in Its History

FRONT ROW: N. Skarda, P. Johnson, D. Delmore, J. Walker, D. Volkey. ROW 2: J. Baryenbruch, S. Brown, R. Kimball, J. Hammerly, L. Bender, D. Stowers, D. Hamburg, P. Reidelbach. ROW 3: A. Simonitsch, J. Kaminski,

S. Joyce, M. Honish, S. Stieve, D. Kruse, T. Neubauer, P. Gray, Vice-President. ROW 4: L. Nehring, L. Hacker, M. Ives, S. Reineking, J. Anderson, V. Harrison, D. Platt, M. Cassidy.





FRONT ROW: D. Anderson, M. Hurley, S. Johnson, B. Borck, M. Neubauer, C. Hammerly, C. Dorow, B. Reidelbach, P. Pearson, G. Bork. ROW 2: M. Dorow, J. Weber, D. Schaffer, B. Baum, L. Reese, C. Wiman, C. Armson, M. Jobe, B. Cottine, J. Farris. ROW 3: A. Pennington, Z.

Wickus, R. Gray, B. Heiz, D. Sheil, K. Kasdorf, M. Leary, M. Kimball, V. Tucker, M. Lucke, S. Fish, L. Hoffman. ROW 4: K. Thompson, G. Shadoff, C. Follendorf, S. Hattle, B. Ryan, E. Van Wie, A. Meltz, B. Zinke, K. Cleary, E. Joyce.

Sophomores and Freshmen Add to Large Membership

FRONT ROW: M. Zapuchlak, M. Luszczak, D. Bressler, K. Sickenberger, D. Farris, D. Honish, S. Weber, T. Wolf-ram, J. Grefe, C. Rubado. ROW 2: D. Stowers, M. Simonitsch, K. Helland, J. Field, D. Joyce, L. Piekarski, J. Kaiser, B. Zinke, M. Delmore, S. Jobe. ROW 3: D. Stacy,

E. Dickerson, T. Schwark, D. Draper, L. Dickman, D. Jones, J. Kaiser, J. Dittrich, S. Reidelbach, P. Wilson, P. Ennis. ROW 4: C. Dorow, S. Flaminio, D. Schultz, R. Tallmadge, P. Hickethier, K. Anderson, B. Bayles, D. Lowe, M. Walker, L. Accola.





FRONT ROW: S. Johnson, P. Johnson, J. Walker. ROW 2: G. Lucke, Captain; L. Sheil, D. Delmore.

Peppy Cheerleaders Boost Chiefs' Spirit

"S-U-C-C-E-S-S" was shouted over and over again as the cheerleaders backed the team at all the athletic events. The student body cheered louder than ever as each new victory mounted up. Two practices every week were held in the summer to learn and perfect cheers. On Thursday nights the girls spent much time practicing cheers and decorating the halls with signs to show their enthusiasm and support.

Pep assemblies were held before each home athletic contest to arouse school spirit and interest. The cheerleaders organized skits and other skits were performed by members of the student body. The girls never gave up. They helped strengthen school spirit, enthusiasm and interest in our sporting activities. Mrs. Powell acted as adviser to the Cheerleaders.

VARSITY CHEERLEADERS lead a cheer during the Pep assembly before the Mauston basketball game.



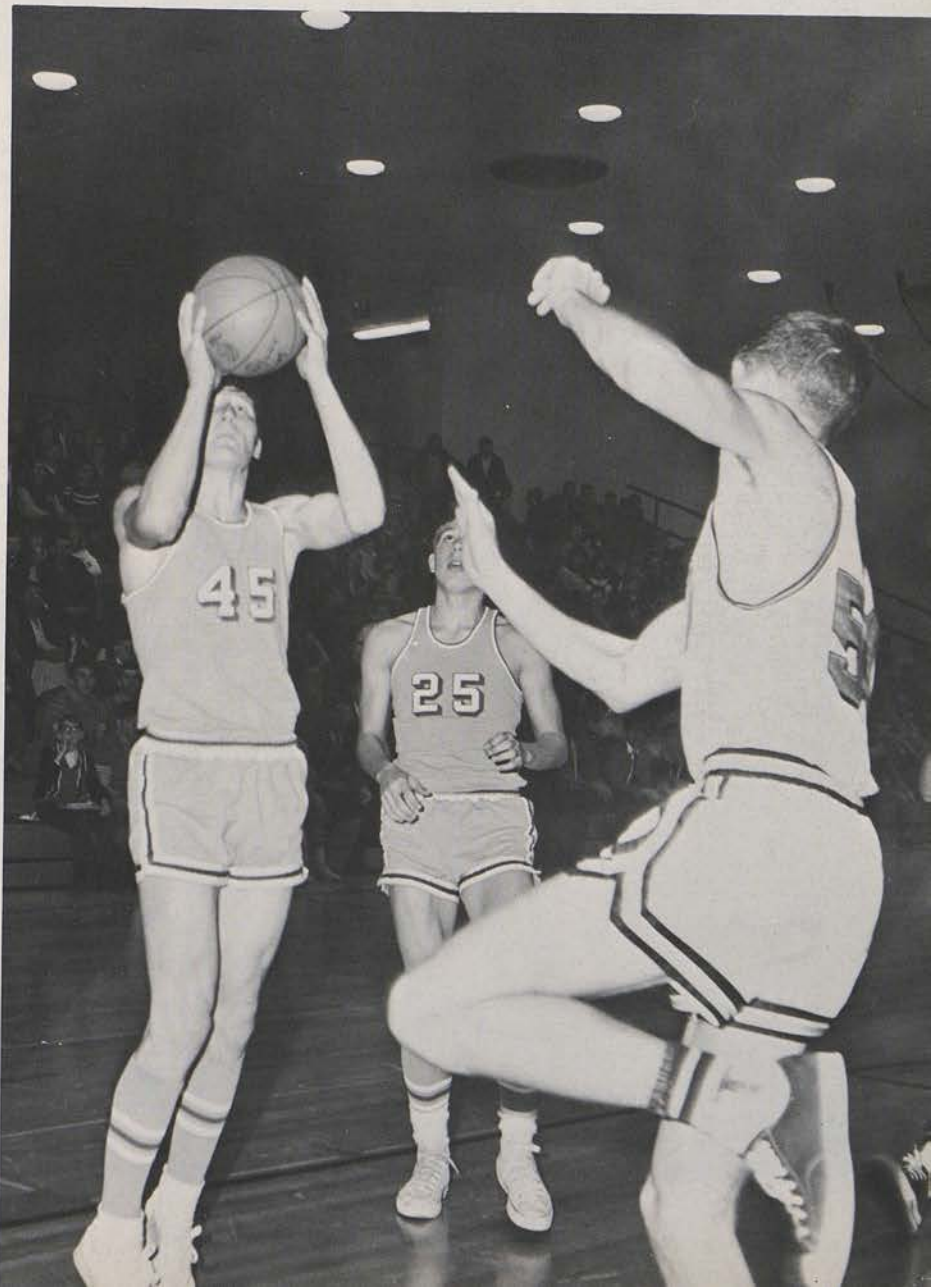
SUE JOHNSON, GINNA LUCKE, AND LINDA SHEIL add finishing touches to signs on Homecoming morning.





Sports

. . . lead us on to victory.





VARSITY SQUAD. FRONT ROW: Bill Kahler, Bill Hartman, Don Kieta, Dennis Sweeney, Dave Gussel, John DeMerit, Dan Scott, Bob Heinzelman, Steve Kahler, Bill Par-

chem. **ROW 2:** Jim Dinegan, Steve Borck, Dennis Draper, Perry Herman, Steve Ennis, Dave Kissack, Larry Kahler, Dennis Dunahee, Bob Gavinski. **ROW 3:** Randy Talmadge,

Gridders Finish Best Season Since 1958

JV SQUAD. FRONT ROW: F. Grefe, K. Weyh, J. Timm, T. Stewart, J. Tollakson, L. McFaul, S. Stanton, M. Anderson, P. Camacho, A. Timm. **ROW 2:** L. Peterson, J. Corton, J. Willard, P. Helland, J. Ramer, M. Baggot, J. Rhine-

hart, R. Haynes, T. Wampler. **ROW 3:** T. Rodwell, D. Fitzgerald, J. Stacy, D. Heinzelman, T. Harper, M. Sweeney, J. Wimann, J. Knox, Manager D. Kruger.





Keith Edwards, Jim DeMerit, Scott Ennis, Tim Tofson, Marty Horkan, Mike Schultz, Jim Kivlin, Tom Knox.

Victories over arch-rivals Portage, Baraboo, and Reedsburg highlighted a season which ended with a 5-2-1 record.

Dennis Sweeney and John DeMerit were named on all-State teams. Dennis Sweeney was selected for both the UPI and AP All-State first team and named on the All-Conference and All-Area teams. John DeMerit was named to the All-State second team and to the All-Conference and All-Area teams and was voted the Most Valuable Player by his teammates.

Dave Gussel was selected for the All-Conference team and All-Area second team and was chosen Captain for the season. Bob Heinzelman and Luther Lonetree were selected as All-Conference. Steve Kahler was chosen as Most Improved Player.



FOOTBALL COACHES: Gordon Lewison, JV and Freshmen Coach; Bob Schultz, Varsity Line Coach; Fred Kuhl, Head Coach; and Matt Bubon, JV and Freshmen Coach, check the football handbook, which discusses schedules, plays, and training rules.

ALERT FOR REEDSBURG DEFENDERS, John DeMerit watches for an opportunity to break away for valuable yardage.



Dells. . . .19	Sparta 22
Dells. . . .0	Mauston. 0
Dells. . . .13	Viroqua 7
Dells. . . .21	Reedsburg12
Dells. . . .34	Richland Center. 0
Dells. . . .14	Baraboo 0
Dells. . . .2	Sauk Prairie3
Dells. . . .12	Portage. 0



FRONT ROW: E. O'Brien, L. Meyer, M. Medo, B. Kaiser, B. Storandt, P. Van Deuren. ROW 2: Coach Richard

Schauf, P. Foss, B. Borchert, D. Edgington, J. Tatera, D. Knox, Manager K. Schweda.

Volleyball Team Misses State by One Game

SETMAN PAT FOSS sets the ball for spiker Larry Meyer during the sectional tournament game against Hillsboro.



The Dells volleyball squad lost to the powerful state champion Kaukauna team in the sectional championship and so missed state by one game. The Dells team placed second in the conference and first in the regional to climax a successful year.

Coached by Mr. Schauf, spikers Mike Medo, Larry Meyer, Bruce Kaiser, Bob Storandt and setmen Ed O'Brien, Peter Van Deuren, and Pat Foss led the team through the season's play.

Dells 3	Reedsburg 0
Dells 3	Sauk-Prairie 0
Dells 0	Monona Grove 3
Dells 0	Monona Grove 3
Dells 3	Hillsboro 0
Dells 2	Hillsboro 1
Dells 3	Baraboo 0
Dells 1	Portage 2

Keen Competition and Enthusiasm Mark Intramural Basketball



ARNIE PLATT AND ANDY ROEKER BATTLE HARD for possession of the ball during a game between the Medo and Van Wie teams.

IN SPITE OF MIKE MEDO'S HEIGHT ADVANTAGE, Keith Edwards gets a shot over Mike's head as rebounders move for position.



Team spirit, good sportsmanship, keen competition, and lots of fun characterized intramural play under the direction of Mr. Kuhl. Captains selected their teams from about 66 basketball enthusiasts who reported for the intramural basketball season in December.

All four classes were represented in the eight teams captained by Tim Leege, Jerry Tatera, Dave Van Wie, Pat Foss, Mike Medo, Bill Kahler, Lester Grant, and Pat Wharry. Every Monday night from 7:00 to 9:00 these teams battled for first place.

At the end of the season, the Leege team was the undisputed champion with a 10-0 record. The Medo and Tatera teams tied for second place with 6-4 records. Individual high scorers were Steve Borck with 220 points and Tim Leege with 187 points.

"YOU CAN'T SCORE WITHOUT THE BALL," says Tim Leege to Howie Nelson as they fight for a rebound.





LARRY MEYER PLAYS A TOUGH SHOT out of the rough under the critical eye of Peter Hickethier.

Golfers Overcome Bogeys for a Good Season

Weeks before the season officially opened members of the golf team were practicing rhythmic swings and trying out new clubs. Later they spent every night after school on the Dell View course getting in shape for the season's competition.

Led by lettermen Don Skarda, Bob Priester, and Larry Meyer, the '67 golf team placed sixth in the Conference meet and fourth in the Sectional meet at the Dell View Country Club. In that Sectional meet Don Skarda shot a fine 42-33, and Larry Meyer came in with a 34 and 39 to pace the Dells to their fine finish. Coached by Mr. Brimer, the team's composite record for the year was 36 wins and 28 losses.

Don Skarda won his fourth letter in golf and was chosen Most Valuable Player. Larry Meyer won his third letter and will be the only returning letterman for the '68 squad.

FRONT ROW: L. Meyer, B. Priester, Coach Robert Brimer, C. Dittrich, D. Skarda. ROW 2: J. Braun, P. Hickethier,

B. Brown, B. Gissal, K. Edwards, B. Borchert, M. Marslander.





FRONT ROW: G. Georgeson, T. Weber, F. Grey, M. Van Deuren, D. Gray, N. Heitman, M. Ferguson, B. Rodger, B. Kahler, ROW 2: Manager Tim Peterson, P. Helland, M.

Anderson, T. Leege, S. Borck, B. Gavinski, L. Rodger, E. O'Brien, J. Gavinski, J. Newman, Coach Al Horn.

Baseball Nine Picked Up Momentum

The Chiefs started the season with six lettermen, but with only two starters from the 1966 squad. They showed improvement throughout the season and lost many hard fought battles to tough conference teams. The team's two victories were against archrival Portage.

Ed O'Brien was voted Most Valuable Player by his teammates. Senior Frank Gray was voted team Captain, and Greg Georgeson Most Improved Player.

ED O'BRIEN begins his slide to the plate as catcher Tim Leege prepares to tag him out during an intra-squad game at the local athletic field.



Dells 4	Sauk-Prairie 8
Dells 0	Baraboo 8
Dells 0	Reedsburg 10
Dells 1	Richland Center 4
Dells . . . 10	Portage 3
Dells 0	Sauk Prairie 9
Dells 1	Reedsburg 5
Dells 4	Baraboo 7
Dells 6	Richland Center 7
Dells 1	Portage 0



FRONT ROW: S. Dickerson, D. Keita, J. DeMerit, M. Horkan, D. Gussel, B. Kaiser, K. Schweda. ROW 2: J. Kivlin, S. Ennis, M. Horkan, T. Tofson, G. Fay, D. Kissack, D.

Dunahee, J. Edmunds. ROW 3: M. Adams, Mgr., J. DeMerit, S. Lackore, T. O'Connor, R. Goodhue, R. Hudzinski, R. Winchel, Coach James DeMerit.

JIM DEMERIT PULLS AWAY from the pack for a victory in the 880-yard relay.



'67 Track Team

Wisconsin Dells had a fine dual meet record—beating all conference teams except Richland Center, the eventual conference champion. An injury and several subpar performances caused a slip to 5th place in the conference meet, but the team bounced back to take 2nd in the sectionals. The Dells again made a good showing in the class B state meet as John DeMerit placed in both hurdles and the pole vault, and the mile relay team came within a whisper of placing.

A school record was set in the mile relay by Jerry Kasdorf, Dave Gussel, Dave Kissack and Bruce Kaiser. John DeMerit set school records in the high hurdles and pole vault, and tied the low hurdle record. Bruce Kaiser tied the 880 record.

Throughout the season the track team competed in the Madison Federation Meet, the Madison West Relays, and the Monona Grove Invitational in addition to meets with Baraboo, Reedsburg, Mauston, Portage, Richland Center, and Sauk Prairie. The team was coached by Mr. Jim DeMerit.



JERRY KASDORF GOES ALL OUT to nip opposing runner at the finish line.



JOHN DE MERIT AND HIS ARCHRIVAL Jerry Bedrick clear hurdle simultaneously on the way to a close finish.

Sets Three New School Records

THE EFFECTS OF THE GRUELING MILE RUN show on the face of Sophomore miler Scott Ennis.



POLE-VAULTING MADE EASY by Senior John DeMerit as he clears the bar for another victory.





VARSIITY WRESTLING SQUAD FRONT ROW: Magdaleno Velasquez, Mike Day, Jim Ashline, Tim Joyce, Scott

Ennis, Steve Ennis. ROW 2: Don Keita, Dan Scott, Tom Wampler, Larry Kahler, Bill Hartman, Mike Marslender.

Outstanding Wrestlers Bring Honors

STEVE ENNIS, 133 lb. wrestler gets another takedown on his way to a 13-6 decision over his Sauk-Prairie opponent.





TIM JOYCE AND BILL HARTMAN won first place in their respective weight divisions in the regional tournament but lost out when they traveled to sectionals.

to WDHS

The Dells wrestlers finished their most successful season in the school's history with a 7 and 4 dual meet record. At the end of the season Steve Ennis, (28-3), qualified for the State Meet and his efforts earned a tie for fifth place. Two Dells grapplers narrowly missed qualifying for the trip to the State Meet in Madison. Senior Bill Hartman, (25-1), and Junior Tim Joyce, (15-10-1), lost out in the sectionals. Bill Hartman was voted Most Valuable Wrestler by his teammates.

Dells	22	Weston	24
Dells	34	Mauston	14
Dells	35	Viroqua	13
Dells	26	Tomah	21
Dells	11	Richland Center	33
Dells	38	Baraboo	15
Dells	19	Reedsburg	26
Dells	8	Portage	36
Dells	42	Sauk-Prairie	8
Dells	44	Sparta	5
Dells	35	Adams	13

TOURNAMENTS

Reedsburg Invitational	2nd
Dells Invitational	4th
Conference Competition	4th
Conference Meet	6th
Regional Meet	2nd
Sectional Meet	4th



MIKE DAY, Dells 103 pound wrestler, brings Sauk-Prairie opponent's shoulders to the mat for a pin.

JUNIOR STEVE ENNIS captured first place in regional and sectional tournaments. At the State wrestling meet in Madison, Steve earned a tie for fifth place.





VARSITY TEAM, FRONT ROW: Ed O'Brien, Tim Tofson, Coach Al Horn, Dennis Dunahee, John DeMerit. ROW 2: Mgr. Tim Peterson, Steve Kahler, Jim DeMerit,

Bruce Kaiser, Dennis Sweeney Bob Gavinski, Larry Meyer, Bob Heinzelman, Mgr. Jerry Corton.

'67-'68 Cagers Compile Best Record in

The '68 edition of the Dells Chiefs won its first undisputed conference championship in the history of the school and went on to earn a berth

in the State Tournaments. The squad was led by seniors John DeMerit, Steve Kahler, Larry Meyer, and Dennis Sweeney, and underclassmen Bob Gavinski, Jim DeMerit, and Tim Tofson.

JUNIOR FORWARD Bob (Red) Gavinski drives past a defender for an easy basket against Tomah. The outcome, a 64-57 victory for the chiefs.

The Chiefs entered the State Tournament with a record of 20-3. The outstanding qualities of this team were team work, poise, scoring balance and the ability to come from behind.



VARSITY BASKETBALL

DELLS	OPPONENT	SCORE
72	Mauston	68
74	River Valley	53
49	Viroqua	43
65	Berlin	87
64	Tomah	57
82	Richland C.	64
63	Baraboo	50
80	Reedsburg	56
58	Sauk-Prairie	73
76	Portage	75
71	Sparta	69
84	Adams-Friend.	44
65	Richland C.	60
48	Baraboo	60
46	Reedsburg	55
64	Portage	62
83	Sauk-Prairie	60
TOURNAMENTS		
75	Reedsburg	55
72	Mauston	68
88	Ithaca	64
66	Baraboo	59
59	Sparta	53
60	LaCrosse	60



BOB GAVINSKI fires a jump shot over the outstretched hand of a defensive player in the overtime period of the Mauston game giving Dells the district championship.

School's History

SENIOR JOHN DEMERIT breaks around Ithaca player Tom Clary for a layup shot during Regional play held here in the Dells.



JOHN DEMERIT finishes a perfect fast break for a two pointer on the way to a 83-60 revenge victory against Sauk Prairie, to clinch the SCC Title.

WITH THREE SECONDS LEFT in the Baraboo game Jim DeMerit passes to Bob Gavinski to set up his jump shot which won the game and brought back the O'Neil Traveling Trophy.





JUNIOR VARSITY SQUAD. FRONT ROW: Gary Fay, Peter Helland, Jim Kivlin, Gary Mattei, Mike Sweeney, Marty Horkan. ROW 2: Coach Gordon Lewison, Jerry Corton,

Manager; Tim Stewart, Mike Schultz, Lee Peterson, John Wimann, Tom Rodwell, Bill Gissal, Ben Olson, John Newman, Trainer.

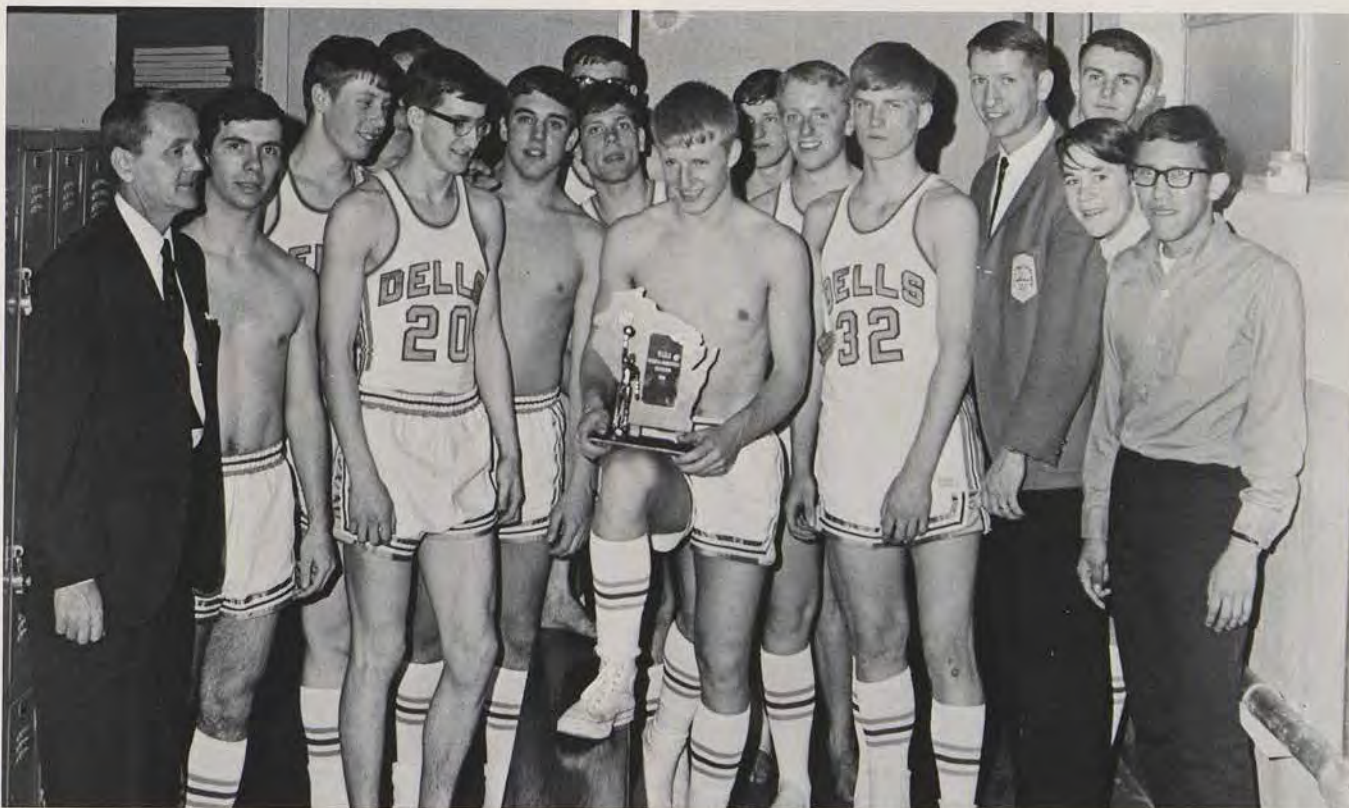
JV and Freshman Basketball Squads Develop Varsity Skills

FRESHMEN SQUAD. FRONT ROW: Rick Haynes, Doug Stanton, Daryl Klicko, Ben Olson, Jamie Tollakson. ROW 2: Coach Gordon Lewiston, Jerry Corton, Manager; Tom

Rodwell, Lee Peterson, John Wimann, Tim Stewart, John Newman, Trainer.



Chiefs Take District, Regional, Sectional on Way to State



VICTORIOUS CHIEFS proudly display their regional trophy as they passed another hurdle on their road to State, a decisive victory over Baraboo.

STEVE KAHLER fires a long one in overtime, for the Chiefs' District Championship over Mauston.

THE OUTSTANDING DEFENSE of the Dells Cagers lead the Chiefs to their third victory over Baraboo.



Coach Horn's Chiefs Take Fourth



MOST VALUABLE PLAYER, John DeMerit, lays one in for two points against LaCrosse Central for the Chiefs' Sectional Championship.



BOB GAVINSKI, voted captain of the '69 basketball squad, sinks another field goal as the Chiefs marched past the Spartans on their way to State.

JIM DEMERIT displays his outside shooting ability in a losing cause against Kimberly at the State Tourney.



STATE TOURNAMENT RECORD

DELLS	OPPONENT	
50	South Milwaukee	49
47	Manitowoc	66
52	Kimberly	72

in State Tourney



LARRY MEYER, one of the Chiefs Most Improved Players, fights for a rebound against Maniwoc in State Tournament play.



CHIEFS' LEADING SCORER, Dennis Sweeney, puts one through the loop despite Kimberly's defensive efforts.

STEVE KAHLER, another of the Chiefs' Most Improved Players, fakes and drives around LaCrosse players in a crucial play on the road to state.





ON MARCH 14, HUNDREDS of Dells fans crowded into the University of Wisconsin Field House to see their Chiefs

battle in State Tournament action against South Milwaukee.

Dells Fans Back Chiefs All the Way

THE DELLS CAGERS MASCOT, Chief Paul Camacho, "Sinks the Ships," in his victory war dance before the Tourney game against Manitowoc.

DELLS BUSINESSMEN AND PARENTS, as well as students, backed their Chiefs by escorting them on fire trucks to awaiting pep rallies in the Chamber of Commerce Parking lot.





FRONT ROW: T. Joyce, M. Horkan, B. Parchem, S. Ennis, T. Jobe, D. Scott, D. Kissack, S. Ennis, D. Dorow. ROW 2: C. Dittrich, J. Kivlin, T. Tofson, D. Gussel, Vice-President; B. Kahler, Treasurer; E. O'Brien, Secretary; T. Casey, C. Greendeer, W. Decorah. ROW 3: S. Dickerson,

B. Storandt, B. Heinzelman, D. Keita, J. DeMerit, President; T. Leege, S. Borck, J. Grey, L. Lonetree. ROW 4: B. Kaiser, K. Schweda, S. Kahler, M. Medo, D. Sweeney, B. Gavinski, D. Dunahee, J. DeMerit.

WD Club Sponsors Game with Harlem Diplomats

The athletes of WDHS banded together in the Lettermen's Club to provide a year of activity including sponsoring a basketball game between the faculty and the Harlem Diplomats. They also initiated a "Snowball" dance in mid-winter. Through these and other projects, money was raised for the club's endeavors including the annual \$100 schol-

arship to an outstanding Senior. Mr. Fred Kuhl was adviser for the club.

It is indeed an honor to win the coveted WD and the club again promoted this image. A boy must have earned a varsity letter and have paid dues of \$1 to belong to Lettermen's Club.

LETTERMAN TREASURER, Bill Kahler, puts up posters announcing the exhibition basketball game between the faculty stars and the Harlem Diplomats.



MEMBERS OF THE LETTERMEN SCHOLARSHIP COMMITTEE, Ed O'Brien, John DeMerit, and Bob Gavinski, select the senior recipient of the \$100 scholarship.





School Life

U! rah! rah! Dells High!



Victory Over Reedsburg Climaxes Homecoming Activities



HOMECOMING FESTIVITIES began when the cheerleaders and pep band led students from their classrooms to the pep assembly.

A CHIEF'S TEPEE, corn shocks, and pumpkins adorned the gym as couples danced to the music of the Mourning Dayze.



Success was the key word for the 1967 Homecoming starting with the pep assembly and ending with the game and dance. "Go Dells, Beat Reedsburg" rang through the halls as the Pep Band and cheerleaders led students to the pep rally. Skits were performed by each class, and the senior skit, "Visit to the Wizard of Oz" was the winning skit.

After the pep rally, the band led the parade through the streets under bright September skies. Float competition was tough, but the senior float, "It Won't be Lawn-g Now," won first prize. Second prize was awarded to the juniors, third prize went to the sophomores. The Key Club and FFA floats tied for first prize in the organizations class.

The high point of Homecoming was the game which our Chiefs won by the decisive score of 21 to 12. After the game couples danced to the music of the Mourning Dayze in the gym which was decorated for the occasion by the senior class.

A HUGE BLUE AND WHITE LAWN MOWER, entitled "It Won't Be Lawn-g Now" was the Seniors' prize-winning float.





1967 HOMECOMING COURT Top to Bottom: King Dave Gussel, Queen Barb Casey, Senior Escort Bill Kahler, Senior Representative Kathy Pennington, Junior Escort Larry Kahler, Junior Representative Linda Nehring, Sophomore

Escort Jim Kivlin, Sophomore Representative Marcia Neubauer, Freshman Escort Mike Baggot, and Freshman Representative Diane Draper.

KING DAVE GUSSEL adds the final touch to the coronation of Queen Barb Casey at the 1967 Homecoming.





PROM COURT: Peter Hickathier, Becky Borck, Ben Borchner, Jane Walker, Tim Casey, King; Judi Delmore, Queen; Jacki Blatchley, Bruce Rodger, Barbara Casey, Peter Van

Deuren, Mike Delmore, Crownbearer; Kai Helland, Flower-girl.

THRONE COMMITTEE WORKERS Ed O'Brien, Paula Van Deuren, Mary Gissal, Prom Chairman Dave Zinke, Dave Gussel and Randy O'Neil begin decorating the stylized throne setting.

KING TIM CASEY CROWNS QUEEN JUDI DELMORE at the climatic moment of the Grand March, officially initiating their reign over the 1967 Junior Prom.



"Midnight Magic" Charms Prom Couples



KAI HELLAND SPRINKLES FLOWER PETALS in the path of the '67 Prom Royalty as she emerges from the medieval castle.

As the spirit of fantasy filled the air, the auditorium was transformed into a land of Midnight Magic with King Tim Casey and his Queen Judi Delmore reigning from their high throne. Couples danced by the castle walls and bubbling fountains to the tune of Ray Whifler and his orchestra. It was the scene of the junior prom, the big social event of the year.

For almost two months the junior class had planned and worked on the one-night affair. At the north end of the auditorium a large castle with a moat and drawbridge was constructed. The Grand March made up of over fifty couples emerged over the drawbridge and formed two lines awaiting the entrance of the King and Queen. The royal couple received the bows and courtesies of the many couples as they ascended the throne where King Tim crowned Queen Judi. After the ball the couples attended the annual Post-Prom party held at the Dell View Hotel featuring the Mourning Dayze.

PROM COUPLES ENTHUSIASTICALLY WHIRL to the melodic strains of Ray Whifler and his orchestra under the

colorful streamers of the false ceiling and the '67 Prom's enchanted spell of "Midnight Magic."



CAST OF CHARACTERS

Abby Brewster	Mary Leary
The Rev. Dr. Harper	Mike Medo
Teddy Brewster	Peter Van Deuren
Officer Brophy	John Williard
Officer Klein	John Demerit
Martha Brewster	Mary Lane Stanton
Elaine Harper	Linda Sheil
Mortimer Brewster	David Zinke
Mr. Gibbs	Jim Grey
Jonathan Brewster	Steve Scheer
Dr. Einstein	David Knox
Officer O'Hara	Jerry Tatera
Lieutenant Rooney	Scott Scheer
Mr. Witherspoon	Bruce Kaiser



CAST MEMBERS TAKE A CURTAIN CALL AFTER FINAL PERFORMANCE OF "ARSENIC AND OLD"

Murder or Charity - Theme of "Arsenic"

SET CREW MEMBERS, Bob Heinzelman, Paula Van Deuren, and Dave Van Wie inspect flats before covering and painting them for backdrops.



DURING ONE OF MANY GRUELING HOURS of rehearsal, Pete Van Deuren runs through his "yellow-fever-victim-burying-routine"





"LACE": Porky Grey, Mike Medo, Dave Knox, Bruce Kaiser, Scott Scheer, Peter Van Deuren, Dave Zinke, Mary Lane

Stanton, Mary Leary, John DeMerit, Steve Scheer, Linda Sheil, John Willard, and Jerry Tatera.

And Old Lace"

The first play since 1963, "Arsenic and Old Lace," delighted its audience and received general approval from all. Many long hours of practice were needed before the final performance. The properties and set crew spent weeks in gathering and preparing donated articles and painting the flats for the background. Make-up and costume crews had many trial make-up sessions and costume fittings. All members of the cast and crew agreed it was great fun and worth the time and effort put into the production. Under the direction of Mr. Bradley, Miss Byhaug, and Mary Gissal, "Arsenic and Old Lace" became a reality.

The light comedy was about two elderly spinsters whose hobby was poisoning lonely old gentlemen, for charity, of course. Their three nephews, Mortimer, a play critic, Teddy, a paranoid who thought he was Teddy Roosevelt, and Jonathon, a murderer, added color and comedy to the performance.

DIRECTORS, Mr. Bradley, Miss Byhaug, Student Director Mary Gissal, and Stage Manager Sam Dickerson discuss a technical aspect of production.



We Followed the Fads and Fashions



AS THE "HITCHHIKER" AND "FRUG" quickly died in popularity, our students made way for such dances as the "Shingaling" and the "Boogaloo."

THE LONG HAIR of John Ennis and Dave Heaps typify the latest men's hair styles.



YOUNG INNOCENTS Kim Helland, Carol Accola, and Charlene Anderson display the "Little Girl Look 1968."

MAGGIE KELLY SHOWS OFF HER matching sweater and knee socks to keep in step with fast moving style changes.



of '68



DAVE GUSSEL proudly models his contribution to the fashion craze at WDHS, the turtleneck sweater.



LONG HAIR, SHORT SKIRTS make for Betty Cottine and Sandy Smith's latest look in fashion.

SOPHOMORES Barb Reidelbach, Debbi Sheil, Carol Folfendorf, Sally Fish, and Liz Van Wie, demurely display their fashion pace-setters in sculptured and fishnet stockings.

lendorf, Sally Fish, and Liz Van Wie, demurely display their





EVERYBODY'S VALENTINE! This year's basketball squad captured the hearts of all Dells fans as they made

their way through their victorious season. This huge, red Valentine showed that "We Luv Our Chiefs."

School Spirit Soars with Cager Victories



AS SCHOOL SPIRIT SOARED, sophomore Paul Camacho put forth his share by performing a victory war dance before the regional tournament battle against Baraboo.

SCHOOL SPIRIT EXTENDED outside of the student body, also. At one of the many assemblies, local businessman Jack Gray gives a bottle of "Spirit" to the student body.



"ALL FOR THE DELLS, STAND UP AND HOLLER!" A battle raged between the Dells and Baraboo fans as well as the players during the exciting regional tournament game between the two rival teams.

AS CONFETTI SHOWERED THE FLOOR, and tears of joy were shed, Coach Horn, with a clinched fist of determination, was boosted on the shoulders of exuberant students after winning the Regional tournament title.





Underclassmen



. . . we now pledge our loyalty.





Accola
Beard
Coon, A.

Anderson
Becker
Coon, K.

Ashline
Bressler
Corning

Avery
Brown
Day

Baggot
Buck
Delmore

Bayles
Christensen,
Dickerson

One-Hundred Twenty-Six

FRESHMAN CLASS OFFICERS: Jack Ramer, Secretary; Susie Kaminski, Treasurer; Kristi Helland, Vice-President; Sue Weber, President.

Dickman
Draper
Elderkin

Dittrich
Dunahee
Elliot

Dorow
Edmonds
Ennis





Field
Gray
Hammerly

Fitzgerald
Grefe, F.
Harper

Frier
Grefe, J.
Haynes

Garlock
Grieves
Heding

Giebel
Guildner
Heinzelman

Ginther
Hamm
Helland

Freshmen Invade WDHS

Helley
Ives
Kaiser, Jane

Hickethier
Jensen
Kaiser, Joan

Honish
Jobe
Kaleas

Howley
Johnston
Kaminski

Huefner
Jones
Kimball

Huffman
Joyce
Klicko





Knox
Machovec
Nelson

Krueger
Mattei
Nichols

Kurtz
Meagher
Olson

Lewis
Molkentine
Paddock

Lowe
Murray
Page

Luszczak
Nagle
Palmer

CHRISTMAS BULLETIN BOARDS decorated by the four classes stimulated the holiday spirit. Debbie Schultz, Lynne Piekarski, and Elizabeth Dickerson finish the freshman Christmas display.



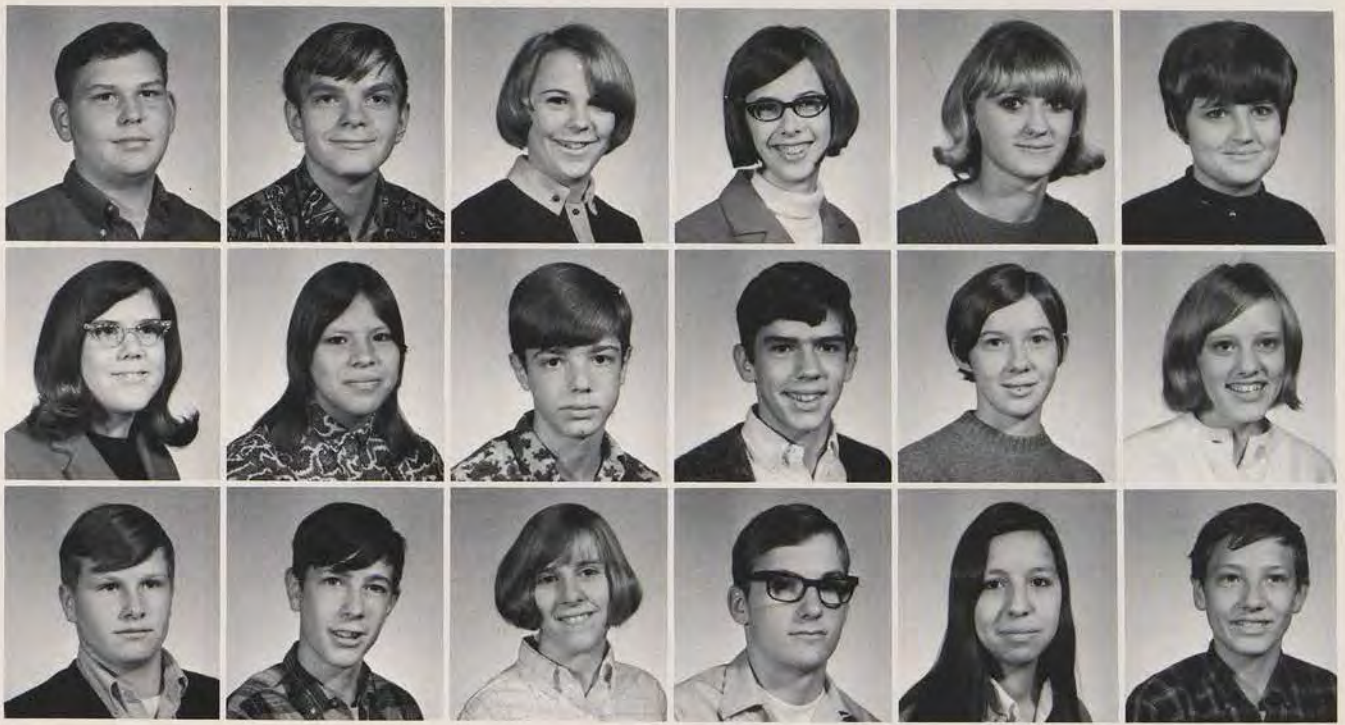
Freshmen Lay

Pearson
Pfister
Ramer

Peasall
Piekarski
Reidelbach

Peterson
Poppie
Rhinehart





Rhinehart
Simonitsch
Stroede

Rodwell
Stacy
Sullivan, D.

Rubado
Stanton
Sullivan, P.

Schultz
Stewart
Sweeney

Schwark
Stone
Tallmadge

Sickenberger
Stowers
Thomas

Groundwork for High School Careers.

Timm
Weber
Wolfram

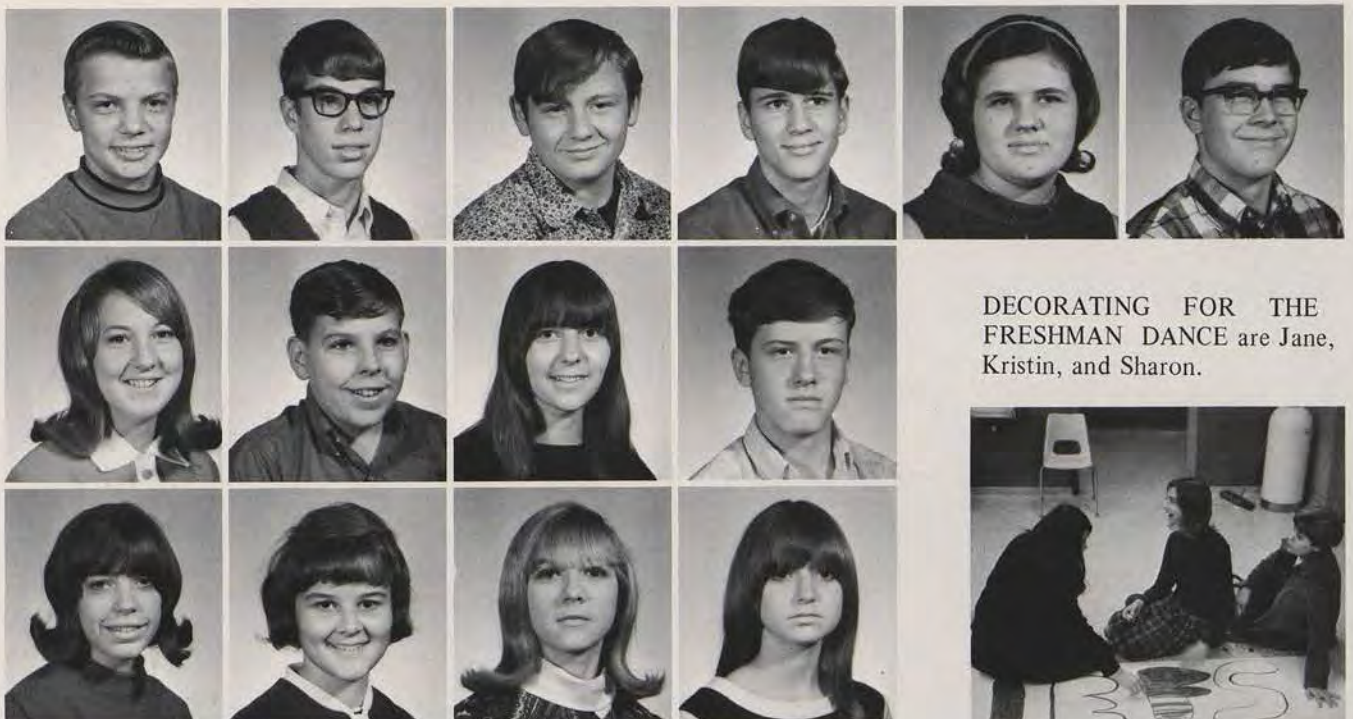
Tollaksen
Williams
Wood

Voights
Wilson
Zapuchlak

Walden
Wimann
Zinke

Walker

Wampler



DECORATING FOR THE
FRESHMAN DANCE are Jane,
Kristin, and Sharon.





Accola
Armson
Braun

Anderson, C.
Ashline
Brown

Anderson, D.
Baum
Camacho

Anderson, Donna
Bixby
Cleary

Anderson, K.
Borck
Coon, L.

Anderson, M
Bork
Coon, P.

Sophomores Boost Attendance

SOPHOMORE CLASS OFFICERS: Randy Bixby, Secretary; Vicki Tucker, Treasurer; Bob Brown, President; Magdalena Velasquez, Vice-President.

Corton
Decorah
Dinegan

Cottine
DeMerit
Donnelly

Day
Dickman
Dorow, C.





Dorow, M.
Edmonds
Erickson

Droste
Edwards
Evans

Dunahee
Ennis
Farber



Fish, B.
Gaffney
Gissal
Gray

Fish, S.
Gasser
Gneiser
Green

Follendorf
Giebal
Goodhue
Greendeer

Hattle
Hofmann
Jobe

Hein
Horkan
Johnson

Heisz
Hudzinski
Joyce

at Athletic Events

Gussel
Helland
Huffman

Hamm
Hickethier
Hurley

Hammerly
Hilliard
Jahn





Kaiser
Lackore
Lebica

Kalamarz
Lapp
Lowe

Kasdorf
Larson, J.
Lucke

Kimball, D.
Larson, S.
Lueck

Kimball, M.
La Vigne
Lytle

Kivlin
Leary
Machovec

Matthews
Miner
Newman
Palmer

Mc Faul
Nagel
O'Connor
Parchem

Meltz
Neubauer
Olson
Payne

Sophomores

Pearson
Platt
Richter

Pennington
Reese
Rodger

Peterson
Reidelbach
Roll





Ryan
Shadof
Steele

Schilling
Shaffer
Stroede

Schultz, D.
Sheil
Tallmadge

Schultz, M.
Smith
Teresinski

Schultz, Mike
Stacy
Thompson

Schweda
Stanton
Timm

Sponsor Sadie Hawkins Dance

Tofson
Weyh
Wimann

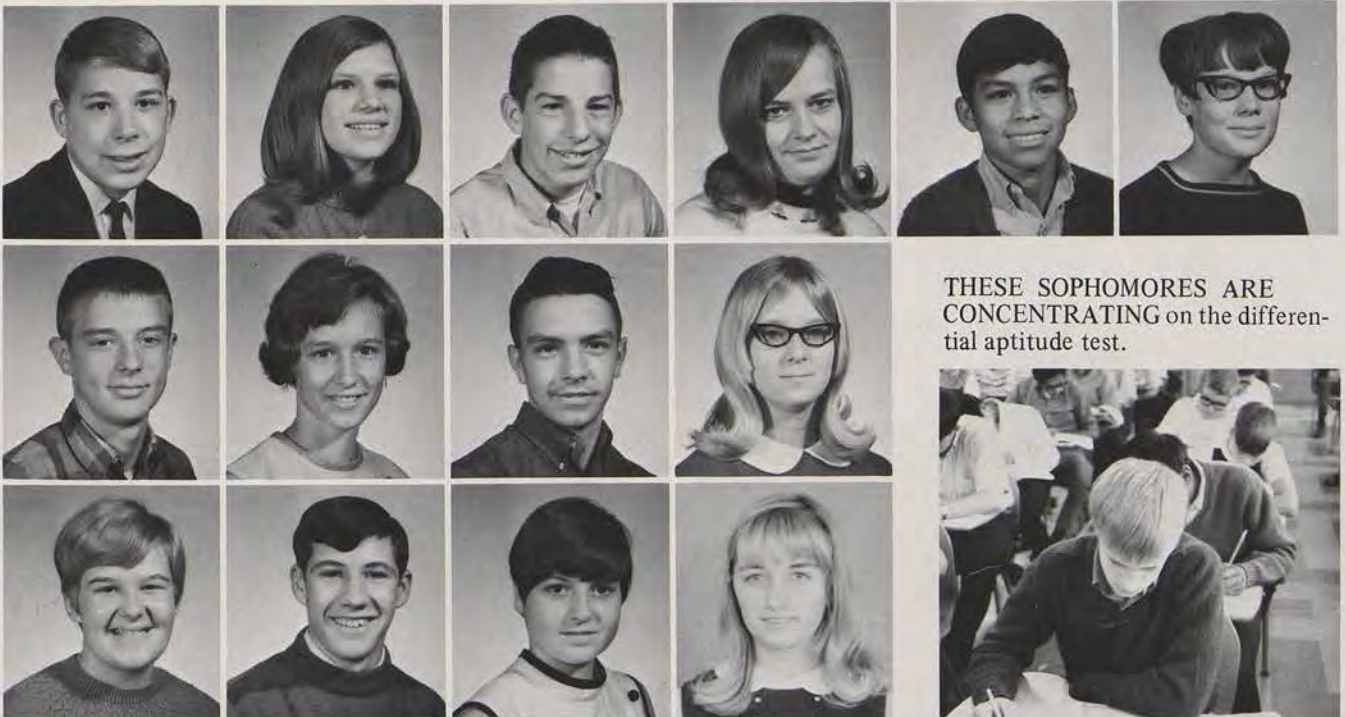
Tucker
Weisner
Winchel

Utter
Westerfeldt
Zinke, B.

Van Wie
Wickus
Zinke, D.

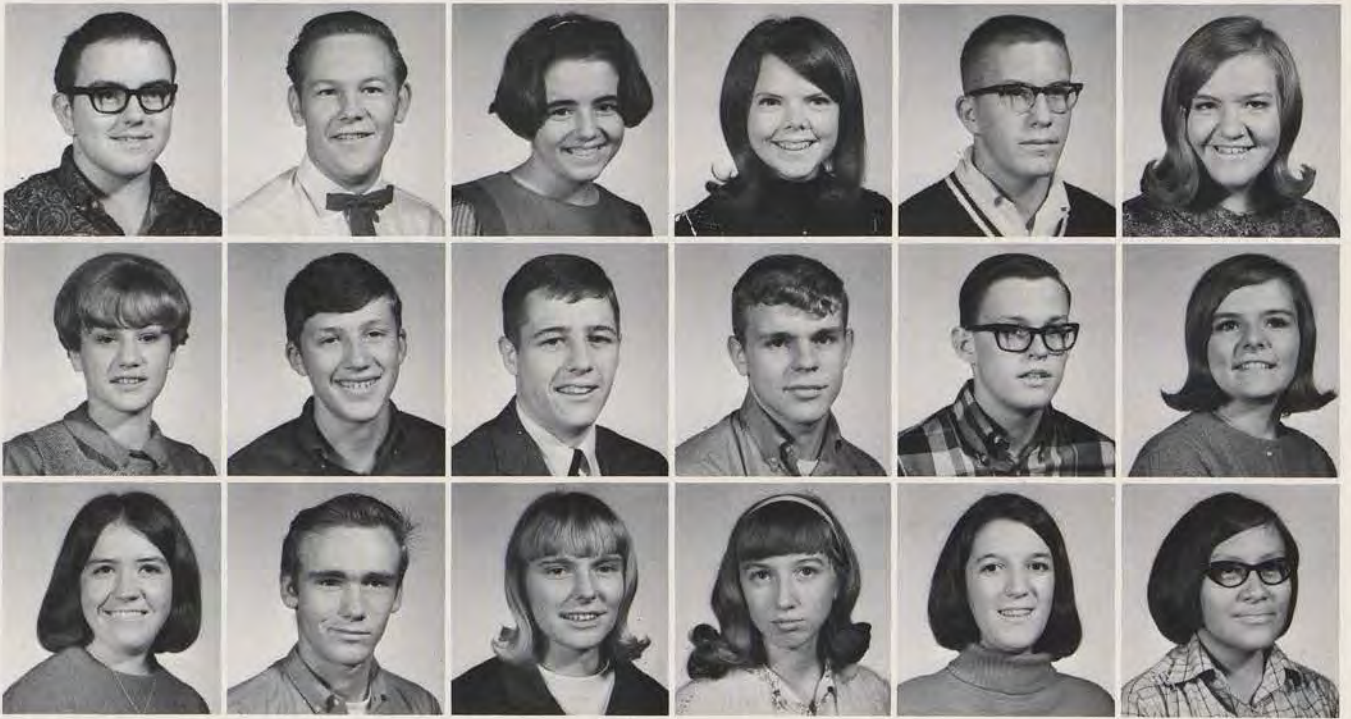
Velasquez

Weber



THESE SOPHOMORES ARE
CONCENTRATING on the differ-
ential aptitude test.





Adams
Bender
Cassidy

Alderman
Borcher
Carey

Anderson
Borck
Corning

Baryenbruch
Borud
Dallman

Baumgarth
Brown, K.
D'Angelo

Beard
Brown, S.
Day

Prom and Class Rings Highlight

JUNIOR CLASS OFFICERS: Philomena Gray, Secretary; Conroy Greendeer, Vice-President; Debbie Delmore, Treasurer; Diana Kruse, President.

Delmore
Doud
Edgington

Dinegan
Draper
Edwards

Dorow
Dunahee
Ennis





Fay
Follendorf
Gill

Field
Gaffney
Goetz

Fitzgerald
Gavinski
Gray



CHOOSING A CLASS RING is an important decision in every junior's life. These juniors are giving thoughtful consideration to rings on display before making their final decision.

Junior Year

Green
Herman
Johnson

Greendeer
Holderman
Joyce, P.

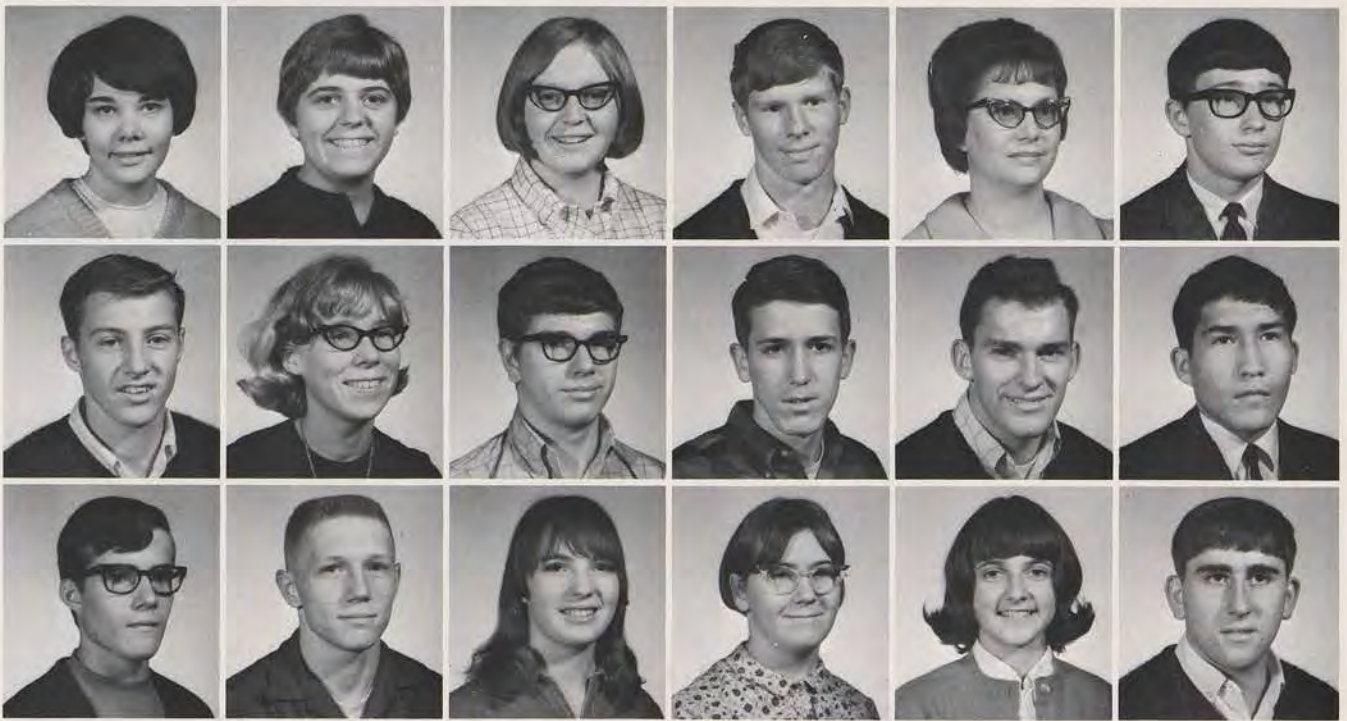
Hagen
Honish
Joyce, S.

Hamburg
Ives
Joyce, T.

Hammerly
Jacobsen
Kahler

Harrison
Jensen
Kaminski





Kelly
Krueger
Luzczak

Kesler
Kruse
Marslender

Kimball
Kurtzweil
Matthews

Kissack
Lebica
Moon

Klicko
Leege
Nehring

Knox
Lonetree
Nelson

Thirty-Two Juniors Take National Merit

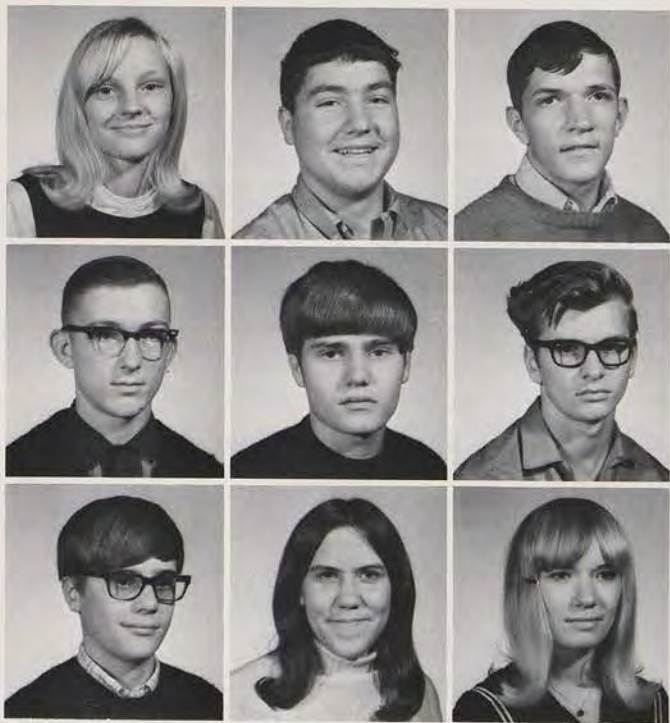
JOHN BAUMGARTH, SUSAN REINEKING, MARY HONISH and RICHIE SCHULTZ are writing the National Merit Scholarship Qualifying Test. The results of this test serve as a basis for the granting of scholarships by industry and certain philanthropic agencies.

Neubauer
Pearson
Reidelbach

O'Connell
Platt
Reineking

Olson
Reid
Rhinehart





Riley
Schroeder
Schultz, R.

Roeker
Schultz, D.
Simonitsch

Scheer
Schultz, Don
Skarda



DECORATING FOR PROM involves considerable planning on the part of Mr. Bubon, junior class adviser, and Dean Edgington, Prom Chairman.

Scholarship Test

Spatz
Volkey
Willard

Stecky, W.
Walker
Wimann, B.

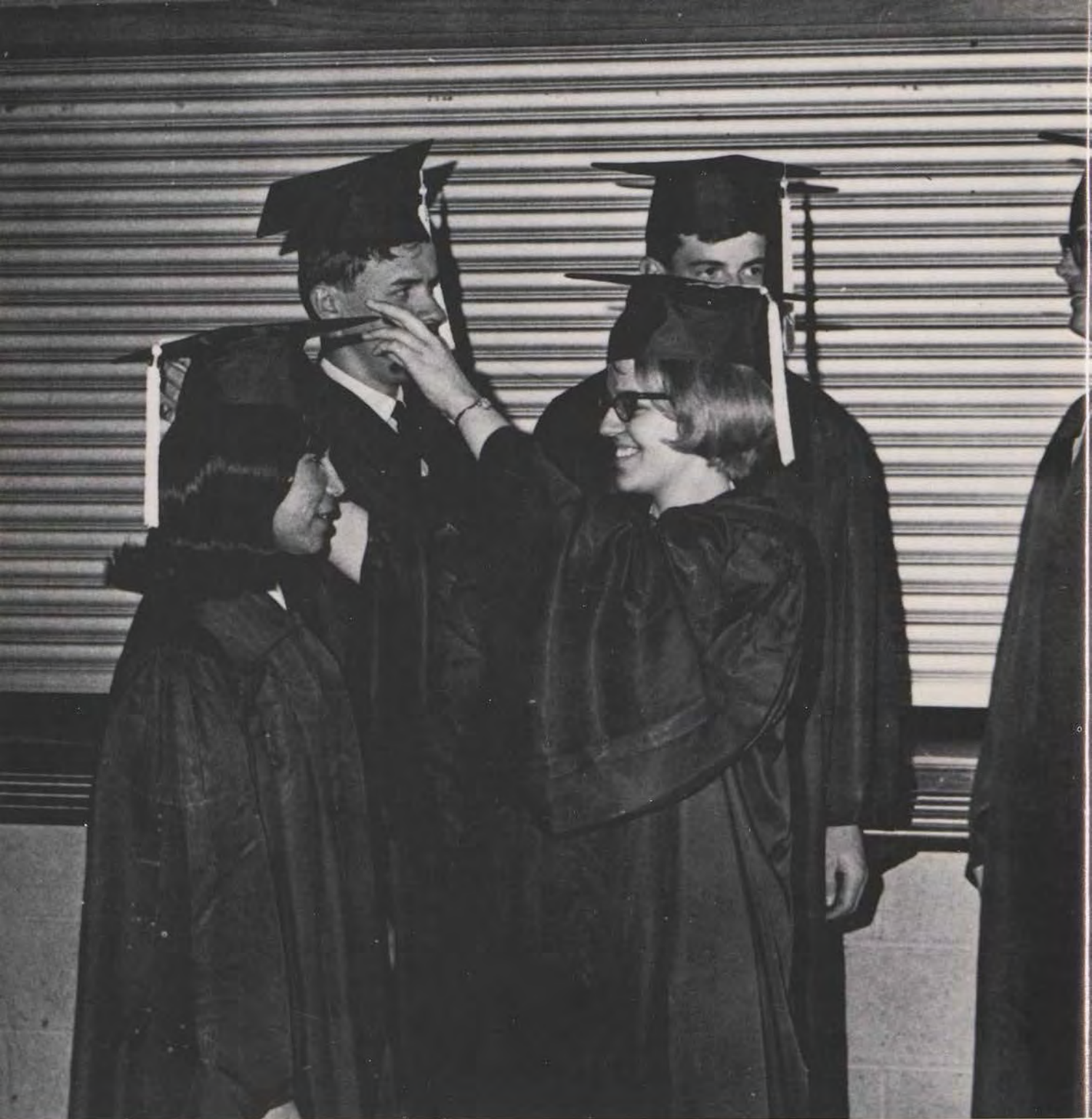
Stecky, B.
Waydick
Wimann, J.

Stieve
Weisner
Wolfram

Stowers
Wheeler
Wood

Sullivan
White Eagle





Seniors



Dells, we're all behind thee . . .





CAROL J. BEARD. GAA 1,2,3,4; FHA 4; AFS 2; Girls Glee Club 1; Latin Club 1,2.

THOMAS L. BECKER. Wrestling 3.

GUSTAVO BOPP P. Transferred from Liceo de Hombres, Punta Arenas, Chile. Key Club 4; Chess Club 4; AFS 4.

THEODORE W. BRENSON. Chess Club 4.

KAREN L. BRIGGS. GAA 1,2,3,4; Pep Club 3,4; NHS 4; Newspaper 3; Chess Club 4; Spanish Club 1, 2,3; School Play 4; AFS 3,4; Band 1,2,3,4.

JOHN K. BUCK. AFS 3; FFA 1,2,3,4.

BARBARA J. CASEY. GAA 1,2,3,4; Pep Club 3, 4; Chess Club 4; School Play 4; Spanish Club 1,3; AFS 1,2,3,4; Band 1,2,3,4; Homecoming Court 2,4.

TIM CASEY. Band 1,2,3,4; WD Club 3,4; Football 1,2,3; Prom King 3; Latin Club 2; Intramural Basketball 2,4; Band Council 2.

GLORIA J. COON. GAA 2,3,4; FHA 1,2,3,4; Arrow Staff 4; Forensics 3.

Beard
Brenson
Casey, B.

Becker
Briggs
Casey, T.

Bopp
Buck
Coon, G.

Graduates of '68 Cram Final Year with Fun, Decisions, Excitement

SELECTION OF ANNOUNCEMENTS brought to seniors the realization that graduation was but a short time away. Representatives from the senior class carefully study samples of announcements before making their final decision.



JOSEPH F. COON. FFA 1,2,3,4.
 DEBORAH DAY. Transferred from Academy of St. Bede. GAA 3,4; Chorus 4; Madrigal Singer 4.
 JUDI DELMORE. GAA 4; Pep Club 4; FHA 1,2,3; Forensics 3; Newspaper 1,2,3; Student Council 3; Band 1,2,3,4; Class Secretary 4; Prom Queen 3.



JOHN DE MERIT. Student Council 2; Key Club 2,3,4; Spanish Club 1; Band 1,2,3,4; WD Club 1,2,3,4; Football 1,2,3,4; Track 1,2,3,4; Basketball 1,2,3,4; Homecoming Court 1.
 KAY L. DECORAH. GAA 2,3,4; FHA 1,2,3.
 DEAN J. DICKMAN.



CRAIG MICHAEL DITTRICH. WD Club 2,3,4; Basketball 1,2,3; Golf Team 1,2,3,4; Intramural Basketball 4.
 BETTY ELLIOTT. FHA 1,2,3,4.
 JOHN R. ENNIS. Transferred from Buena High School, Sierra Vista, Arizona.



Ennis, M.
Erickson

Dickerson
Fischer, K.

Coon, J.
DeMerit
Dittrich

Day
Decorah
Elliott

Delmore
Dickman
Ennis, J.



MICHAEL V. ENNIS. Transferred from Buena High School, Sierra Vista, Arizona. School Play 4.
 SAM R. DICKERSON. NHS 4; Forensics 1,2,3; Debate Team 1,2,3; Arrow Staff 4; Student Council 1,3; Key Club 2,3,4; Dist. Lt. Gov. 3; Chess Club 4; WD Club 2,3,4; School Play 4; AFS 1,2,3,4; Chorus 1,2,3,4; Football 1,2; Basketball 1,2; Track 1,2,3,4; Class President 3; Prom Court 1; Boy's State 3; Madrigal Singer 1,2,4.



PEGGY D. ERICKSON. GAA 1,2,3,4; Pep Club 3; Arrow Staff 4; Newspaper 2,3,4.
 KAREN FISCHER. FHA 1,2,3,4.

JAMES M. FISHER. Intramural Basketball 1,2,3,4.
 PATRICK FOSS. School Play 4; Band 1,2,3,4; WD Club 4;
 Football 2; Volleyball 4; Latin Club 2; Intramural Basket-
 ball 1,2,3,4; Basketball 1.



SUSAN GAFFNEY. School Play 4; Band 1,2,3,4.
 VIRGINIA M. GAFFNEY. FHA 1,2,3,4.



Garton
 Gissal
 Grey

Garvin
 Godlewski
 Griffin

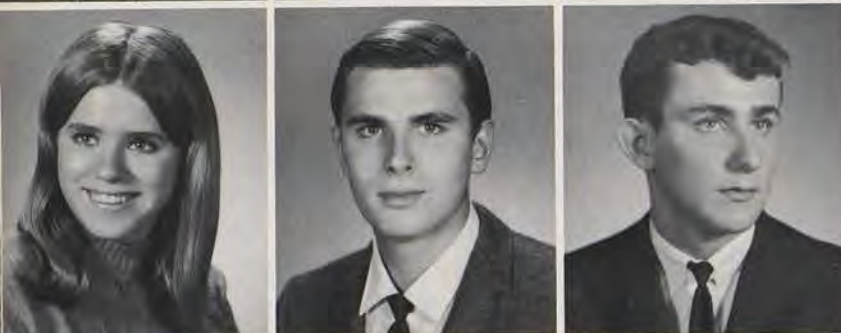
Gavinski
 Grant
 Gussel

Fisher, J.
 Gaffney, S.

Foss
 Gaffney, V.



MARIE GARTON. Transferred from McFarland High School. FHA 4; GAA 4.
 BRIDGE GARVIN. GAA 1,2,3,4; Pep Club 2; FHA 1,2,3; Newspaper 3.
 JOHN GAVINSKI. Football 1,2; Baseball 1,2,3,4.



MARY GISSAL. GAA 1,2,3,4; Pep Club 3,4; NHS 3,4; Student Council 1,2; Spanish Club 1,2,3,4; AFS 1,2,3,4; Band 1,2,3,4; Dance Band 1,2,3,4; Class Secretary 1; Class Vice-President 2; Prom Court 1; Americans Abroad Program, Peru.
 EDWARD GODLEWSKI. Chess Club 4; School Play 4; Intramural Basketball 4.
 LESTER GRANT. Track 4; Intramural Basketball 1,2,3,4.



JAMES K. GREY. Forensics 3; Arrow Staff 4; Newspaper 3; Key Club 2,3,4; School Play 4; WD Club 1,2,3,4; Intramural Basketball 1,2,3; Football Manager 1,2,3; Basketball Manager 1,2,3; Baseball Manager 1,2.
 JEANETTE GRIFFIN. FHA 1,2,3,4.
 DAVID GUSSEL. Forensics 3; WD Club 1,2,3,4; Band 1,2,3,4; Football 1,2,3,4; Basketball 1,2,3,4; Track 1,2,3,4; Class Vice-President 1; Homecoming Court 3,4.



Future Holds Varied Vocations for Seniors

TIM CASEY IS THE INTERVIEWER and Betty Elliott is the applicant in this job interview conducted in a senior social problems class during a study of careers.

Hagen
Hattle
Helland

Hammerly
Heaps
Holderman

Hartman
Heinzelman
Holton

KEN HAGEN. Chess Club 4.
SUE HAMMERLY. FHA 1,2,3,4.
WILLIAM HARTMAN. FFA 1,2,3,4; WD Club 4;
Football 1,4; Baseball 4; Wrestling 1,2,3,4; Intra-
mural Basketball 3.

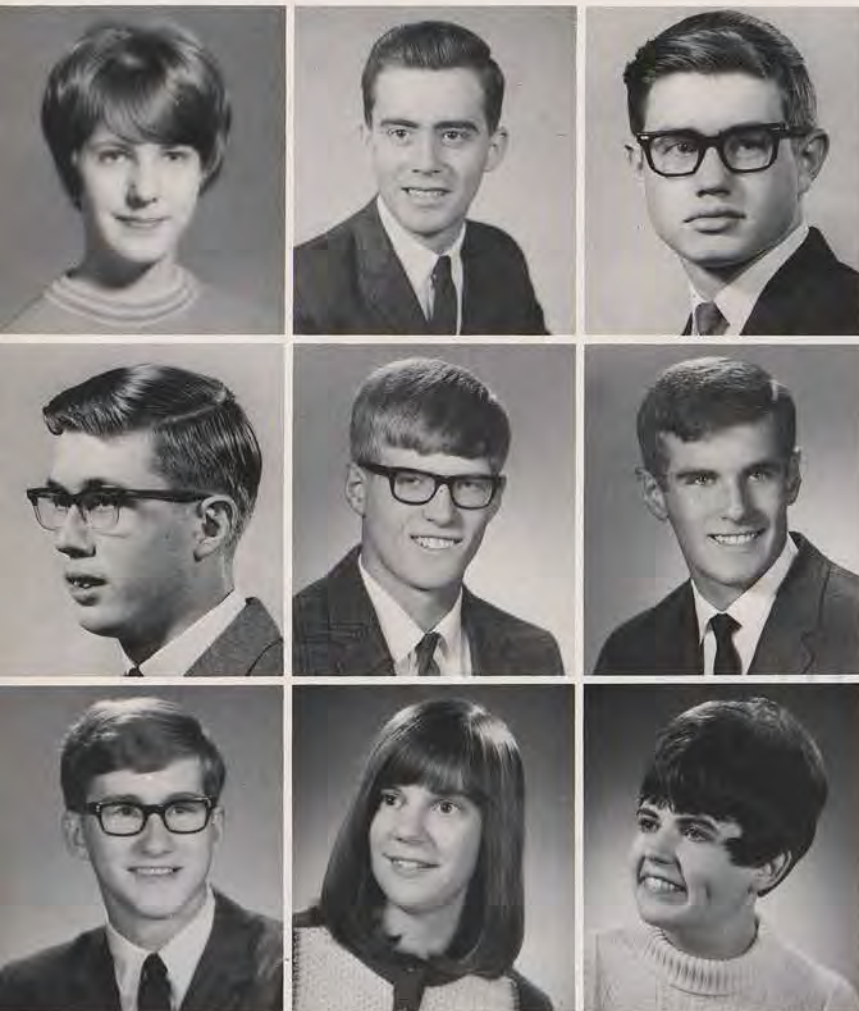


LINDA HATTLE. GAA 1,2,3; Pep Club 3; FHA 1;
Newspaper 3,4; Librarian Club 3,4; Latin Club 1,2.
DAVID HEAPS. Transferred from Pardeville High
School. School Play 4; Band 3,4; Wrestling 3,4; Class
Vice-President 4.
ROBERT J. HEINZELMAN. WD Club 2,3,4;
Football 1,2,3,4; Basketball 1,2,3,4.



KAREN K. HELLAND. GAA 1,2,3,4; Pep Club 3,
4; NHS 4; Forensics 1,3; Spanish Club 1,2,3; AFS 1,
2,3,4; Band 1,2,3,4; Latin Club 3,4.
SUSAN J. HOLDERMAN. GAA 2; FHA 1,2,3,4;
Newspaper 3.
CHARLES HOLTON. Transferred from Webb High
School, Reedsburg, Wisconsin.





ELAINE M. JENSEN. GAA 1,2,3,4; Pep Club 3; NHS 2,3,4; Forensics 1,3; School Play 4; Band 1,2,3,4; Chorus 2; Band Council 4; Spanish Club 1,2.
 TIMOTHY JOBE. FFA 2,3,4; WD Club 2,3,4; Cross-Country 2.
 BRUCE JONES.

STEPHEN R. JONES.
 STEPHEN D. KAHLER. Football 1,3,4; Basketball 2,4; Intramural Basketball 1,3.
 WILLIAM KAHLER. WD Club 4; Football 2,3,4; Basketball 2; Baseball 3,4; Homecoming Court 4; Volleyball 3; Intramural Basketball 1,3.

BRUCE D. KAISER. Chess Club 4; WD Club 1,2,3,4; School Play 4; AFS 4; Band 1,2,3,4; Dance Band 1,2,3,4; Football 1,3; Basketball 1,2,3,4; Track 1,2,3,4; Cross-Country 2; Volleyball 4; Latin Club 2.
 TERESA KAMINSKI. GAA 2,3,4; NHS 4; FHA 4; Arrow Staff 4; School Play 4; AFS 3,4; Band 1,2,3,4; Chorus 4; Dance Band 2,3,4; Homecoming Court 3; Madrigal Singers 4; Twirler 4; Latin Club 2; Class Treasurer 2.
 DIANE LOUISE KESLER. GAA 3,4; NHS 3,4; FHA 1,2,3; Forensics 1,3; Arrow Staff 4; Newspaper 3; Chorus 2,3,4; Girls' Glee Club 1; Class Secretary 2.

Jensen
 Jones, S.
 Kaiser

Jobe
 Kahler, S.
 Kaminski

Jones, B.
 Kahler, W.
 Kesler

Barbara Casey Reigns As Homecoming Queen

THE CO-OP GARAGE WAS THE SCENE of frenzied activity as seniors Ed O'Brien, Kim Helland, Dave Van Wie, and Sam Dickerson constructed a giant lawn mower to carry out the theme of their first-place Homecoming float.



DONALD M. KIETA. WD Club 2,3,4; Football 4; Track 2,3,4; Wrestling 3,4; Volleyball Manager 1,2. DAVID JOHN KNOX. Forensics 4; Debate Team 2,3,4; Arrow Staff 4; Newspaper 2,3,4; Chess Club 4; School Play 4; Spanish Club 1,2,3; AFS 2,3,4; Football 2; Volleyball 4; Intramural Basketball 4. MARIJA KURTZ. Transferred from Chicago Vocational High School, Chicago, Illinois. GAA 4; Pep Club 3; FHA 4.



KATHLEEN A. LAPP. GAA 2; Forensics 3; Chess Club 4; Band 1,2,3,4.

MARY E. LARSON. NHS 3,4; FHA 1,2,3,4; Arrow Staff 4; Chorus 2,3,4; Girls Glee Club 1; Girl's State 3.

MARY LEBICA. GAA 1,2,3,4; Pep Club 3,4; Arrow Staff 4; Newspaper 1,2,3; Student Council 3; Librarian Club 1,2,3; School Play 4; AFS 3,4; Class Treasurer 4.



TIMOTHY J. LEEGE. Chorus 1,2; WD Club 3,4; Baseball 1,2,3,4; Latin Club 2; Intramural Basketball 1,2,3,4.

PATTIE LOWE. GAA 1,2,3,4; Pep Club 3,4; FHA 1; Chorus 2; Girls Glee Club 1.

VIRGINIA A. LUCKE. GAA 1,2,3,4; Pep Club 3,4; NHS 3,4; Chess Club 4; School Play 4; Spanish Club 1,2,3; AFS 1,2,3,4; Band 1,2,3,4; Class Treasurer 1; Homecoming Court 1; Cheerleader 3,4.



D. Lueck
Meyer

Medo
Mitchell

Kieta
Lapp
Leege

Knox
Larson
Lowe

Kurtz
Lebica
V. Lucke



DENNIS L. LUECK. Newspaper 2,3; School Play 4.

MICHAEL MEDO. NHS 3,4; Camera Club 3,4; Forensics 1,2,3,4; Arrow Staff 4; Student Council 3; Key Club 2,3,4; Chess Club 4; WD Club 4; School Play 4; Band 1,2,3,4; Basketball 1,2,3; Volleyball 3,4; Band Council 4.



LARRY MEYER. WD Club 1,2,3,4; Football 1; Basketball 1,2,4; Golf Team 1,2,3,4; Volleyball 3,4; Intramural Basketball 3.

PATRICK JAMES MITCHELL. Forensics 3; Arrow Staff 4; Newspaper 1,2,3; Key Club 3,4; FFA 1,2,3,4; Latin Club 2.

VIRGINIA A. MURRAY. Arrow Staff 4; Spanish Club 1,2,3,4.

JUDITH ANN NEISES. GAA 1,2,3,4; Pep Club 3; FHA 4; School Play 4; Newspaper 3; Latin Club 2.

DIANA LOUISE NEWMAN. NHS 2,3,4; Forensics 1; Newspaper 2,3; Chess Club 4; School Play 4; Spanish Club 1,2,3; AFS 1,2,3; Band 1,2,3,4; Chorus 2,3,4; Dance Band 4; Madrigal Singer 3,4; Majorette 4.

EDMUND O'BRIEN. Forensics 2,3; Arrow Staff 4; Newspaper 3; Student Council; Key Club 2,3,4; Spanish Club 1; WD Club 2; Football 1,2; Basketball 1,2,4; Latin Club 2; Volleyball 3,4; Boy's State 3; Homecoming Court 2; Class Vice-President 3; Class President 1; Baseball 1,2,3,4; Chess Club 4.



Novinska
Patten
Reese

O'Neill
Pennington
Richter

Parchem
Ragan
Scheer

Murray
Newman

Neises
O'Brien



RICHARD A. NOVINSKA.

RANDY O'NEILL. Golf Team 1,2,3,4; Intramural 4.

WILLIAM PARCHEM. WD Club 3,4; Track 1; Wrestling 3; Football 1,2,3,4; Intramural Basketball 4; Basketball 1,2.



BILLI PATTEN. Transferred from Baraboo High School. Band 2,3,4.

KATHRYN PENNINGTON. GAA 1,2,3,4; Pep Club 3; NHS 3,4; Arrow Staff 4; Newspaper 2,3; Student Council 1,2; School Play 4; Spanish Club 1,2,3; Class Secretary 3; Homecoming Court 4; Girls' State 3.

JACK RAGAN. Camera Club 3,4; Arrow Staff 4; Newspaper 3,4; Intramural Basketball 1.



BETSY REESE. Arrow Staff 4; Student Council 4; Spanish Club 1,2; Band 1,2,3,4; Chorus 2,3,4; Girls' Glee Club 1; Dance Band 1,2,3,4; Prom Court 2; Madrigal Singers 3,4.

GINGER K. RICHTER. GAA 1,2,3,4; Pep Club 3; FHA 1,2,3; Newspaper 3.

SCOTT SCHEER. Transferred from Burt High School. Key Club 3,4; School Play 4; Band 3,4; Chorus 3,4; Boy's Quartet 3,4; Madrigal Singers 3,4.



Class of '68 Sets Precedents and Follows Traditions

SUE GAFFNEY, JUDI DELMORE, AND MARY LANE STANTON put finishing touches on the Senior Bulletin Board which took first place in the Christmas contest, which was sponsored by the newspaper staff.

Schultz
Schweda, T.
Sheil

Schweda, K.
Scott
Sine

Schweda, M.
Shaffer
Smith

LYNN MARIE SCHULTZ. GAA 1,2,3,4; Pep Club 3,4; Forensics 1,2,3; School Play 4; Spanish Club 1, 2,3; AFS 2,3; Band 1,2,3; Chorus 2; Dance Band 2, 3; Librarian Club 4; Newspaper 2,3.

KENNETH R. SCHWEDA. Chess Club 4; WD Club 2,3,4; School Play 4; Track 1,2,3,4; Wrestling 1,2; Volleyball 4; Intramural Basketball 4.

MIKE SCHWEDA. Wrestling 1,2; FFA 1,2,3,4.

TOM SCHWEDA. FFA 1,2,3,4; Wrestling 1,2.

DANIEL SCOTT. WD Club 3,4; Football 4; Wrestling 2,3,4.

RONALD SHAFFER.

LINDA SHEIL. GAA 1,2,3,4; Pep Club 3,4; NHS 4; Forensics 3; Arrow Staff 4; Student Council 4; Chess Club 4; School Play 4; AFS 3,4; Band 1,2,3,4; Dance Band 2,3,4; Cheerleader 4.

OLLIE R. SINE. GAA 2,3,4; Newspaper 3.

SANDRA L. SMITH. GAA 1,2,3; FHA 1,2,3.





DIANA M. SOBOJINSKI. FHA 3,4.
LINDA K. STANKE. FHA 1,3,4.
WILLIAM E. STANNARD.

MARY LANE STANTON. GAA 1,2,3,4; Pep Club 3,4; Newspaper 3,4; Librarian Club 4; Latin Club 1, 2; Forensics 3; School Play 4.
KATHY ANN STEPHENSON. GAA 1,2,3,4; Pep Club 3,4; Chess Club 4; AFS 4; Band 1,2,3,4.
ROBERT J. STORANDT. NHS 2,3,4; Key Club 3, 4; WD Club 4; Volleyball 2,3,4; Intramural Basketball 1; FFA 2,3,4.

SUZANNE STOWELL. GAA 2; FHA 3.
BARBARA J. STROEDE. GAA 3,4; FHA 1,2; Librarian Club 4; Girls' Glee Club.
DENNIS JAMES SWEENEY. Newspaper 4; Key Club 2,3,4; WD Club 2,3,4; Football 2,3,4; Basketball 2,3,4; Baseball 1,2,3,4; Homecoming Court 2.

Sobojinski
Stanton
Stowell

Stanke
Stephenson
Stroede

Stannard
Storandt
Sweeney

Senior Tea, Picnic, Banquet Highlight Seniors' Final Week

JIM FISHER, SUE GAFFNEY, BETTY ELLIOT, AND LINDA HATTLE are enjoying the traditional tea given for the seniors by the wives of the men faculty members.



GERALD TATERA. NHS 3,4; Student Council 4; Key Club 2,3,4; Chess Club 4; AFS 2; Basketball 1, 2; Class Treasurer 3; Volleyball 3,4; Intramural Basketball 2,4.

BILL TERESINSKI. Intramural Basketball 1,2,3,4.
DALE M. THOMAS.

RENEE THUNDERCLOUD. Transferred from Mauston High School. GAA 2,3,4; FHA 3; Pep Club 3; Newspaper 3,4.

PAULA M. VAN DEUREN. GAA 1,2,3,4; Pep Club 3,4; Chess Club 4; Band 1,2; Girls Glee Club 1; Chorus 4; Twirler 2.

PETER G. VAN DEUREN. Chess Club 4; School Play 4; Basketball 2; Track 2; Prom Court 3; Cross-Country 2; Volleyball 3,4; Intramural Basketball 2, 3,4.

DENNIS VAN SCHOYCK. Wrestling 2; Intramural Basketball 1,2,3,4.

DAVID VAN WIE. Key Club 3,4; WD Club 2,3,4; School Play 4; Football 1,2,3,4; Baseball Manager 2; Wrestling Manager 2,3,4; Intramural Basketball 3,4.

THOMAS H. VOGT. Football 1,2.



Vokac
Wharry

Wagner
Wilson

Tatera
Thundercloud
Van Schoyck

Teresinski
Paula Van Deuren
Van Wie

Thomas
Peter Van Deuren
Vogt



ED VOKAC. Transferred from Morton East High School, Chicago, Illinois.

RHONDA L. WAGNER.



PATRICK L. WHARRY. WD Club 2,3,4; Football 2,3,4; Wrestling 1,2; Intramural Basketball 3,4.

PATRICIA A. WILSON. GAA 2,3,4; Pep Club 3; Spanish Club 1,2; AFS 1,2; Band 1,2,3,4; Girls Glee Club 1.

CAROL ZAHINA. GAA 1,2,3,4; Pep Club 4; FHA 1; Librarian Club 2,3; Girls Glee Club 1.
 KATHIE LYNN ZELNER. GAA 2,4; FHA 4; Arrow Staff 4; AFS 1,2.



MAURICE L. ZICK. Intramural Basketball 2,3,4.
 DAVID FREDERICK ZINKE. Forensics 3,4; Newspaper 1,3; Student Council 2,4; Chess Club 4; School Play 2,4; AFS 2,3,4; Chorus 3,4; Class President 2; Prom Chairman 3; Class President 4; Prom Court 2; Boy's State 3; Madrigal Singers 4.



Zahina
Zick

Zelner
Zinke

Outstanding Seniors Receive Recognition, Honors, Awards

SENIOR OFFICERS Dave Heaps, vice-president; Linda Sheil, student council; Dave Zinke, president; Mary Lebica, treasurer; Jerry Tatera, student council; Judi Delmore, sec-

retary; and Mr. Gordon Lewison, advisor, are planning the senior banquet. Not pictured is Betsy Reese, student council representative.





TOP TEN From front to back: Mary Gissal, Valedictorian; Sam Dickerson, Salutatorian; Ginna Lucke, Diana Newman, Patty Wilson, Mary Larson, Kathy Pennington, Rhonda Wagner, Jerry Tatera, and Mike Medo.

DENNIS SWEENEY AND JOHN DeMERIT, two of our outstanding football players, were selected for the first and second All-State football teams, respectively.



CITIZENSHIP AWARDS Seated: Kathy Pennington, DAR Good Citizen and Badger Girls' State; Ed O'Brien, Badger Boys' State; Mary Larson, Badger Girls' State. Standing: Mike Medo, DAR Good Citizen; Dave Zinke, Badger Boys' State.



SAM DICKERSON was one of five in Wisconsin to attend the 1967 National Youth Conference on the Atom at the Argonne Laboratories in Chicago.

BOB STORANDT was the winner of the district FFA oratorical contest on the subject of "Water Pollution." **LYNN SCHULTZ** scored highest of all senior girls who took the Betty Crocker Homemaker of Tomorrow test.



This Was a Wonderful Year



THE DOOR CLOSES ON ONE PHASE of seniors' lives, and seniors do many things for the "last time." Steve Kahler is cleaning out his locker for the last time and checking to see what papers to keep and what to discard.

It was a wonderful year -- this year of '67 - '68. It all began when we came back in the fall to find the new addition almost ready for use. A spacious new band room with wall-to-wall carpeting welcomed band members. The new chemistry lab had all the equipment that any young scientist could want. The new art room provided a pleasant atmosphere for creativity. There was a new darkroom, a beautifully equipped reading improvement room, a visual aids room, office machines room, and a room for the annual staff.

The band began intensive marching practice for the Packer game soon after school started. In spite of rain, the band's performance was so outstanding that Mr. Bestul received complimentary letters from people all over the country. In October the annual staff received a First-Class Honor rating from the National Scholastic Press Association with 6600 points. "Arsenic and Old Lace," the first dramatic production in many years, was produced by an all-school cast. The Spring Tour was more exciting for juniors this year, because they flew to Washington on an "electra" plane and came home by jet.

The football team ended the season with a fine 5-2-1 record, and two gridgers were named to All-State football teams. The wrestlers chalked up the best record in the school's history with one wrestler qualifying for the State meet. The volleyball team, with a 11-4 record, won the regional title. The basketball team captured four basketball trophies as first-place winners in Conference, District, Regional, and Sectional competition. These victories gave the Chiefs a berth in the State Tournament, the first time since 1942.

Now, as we face the end of our high school years with mingled feelings of nostalgia, satisfaction, and anticipation, we know we will always remember this wonderful year.

Student Index

- Accola, Carol 86,96
 Accola, Lou 43,60,92
 Adams, Mackey 48,49,56,70,100
 Alderman, Lee 100
 Anderson, Charlene 39,86,96
 Anderson, Debra 8,41,42,60,96
 Anderson, Donna 8,23,39,96
 Anderson, Jane 46,48,49,57,59,100
 Anderson, Karen 60,92
 Anderson, Kathy 28,39,96
 Anderson, Mainert 64,69,96
 Armson, Cheryl 8,42,55,60,96
 Ashline, Jim 8,12,53,72,96
 Ashline, John 42,53,92
 Avery, Maureen 43,49,92
 Baggot, Michael 44,64,81,92
 Baryenbruch, Jane 48,49,55,57,59,100
 Basden, Alice 18
 Baum, Beverly 54,60,96
 Baumgarth, John 14,36,44,45,50,100,102
 Bayles, Bonnee 60,92
 Beard, Carol 28,52,58,106
 Beard, Dennis 92
 Beard, Leah 25,55,100
 Becker, John 92
 Becker, Tom 12,106
 Bender, Laurie 48,49,57,59,100
 Bixby, Randy 32,38,46,49,96
 Bopp, Gustavo 45,48,49,56,106
 Borchert, Ben 8,41,42,66,68,82,100
 Borck, Becky 39,60,82,86,96
 Borck, Steve 6,64,69,77,100
 Bork, Jene 8,42,49,54,60,96
 Borud, Larry 26,28,53,100
 Bosshart, Chris 31
 Braun, Jeff 68,96
 Brenson, Ted 56,106
 Bressler, Dianne 60,92
 Briggs, Karen 2,4,8,40,48,49,50,57,58,106
 Brown, Kathy 92
 Brown, Kim 42,53,100
 Brown, Robert 8,42,43,44,68,96
 Brown, Sue 8,46,48,49,57,59,100
 Buck, John 53,106
 Buck, Kristine 38,52,92
 Camacho, Paul 64,89,96
 Carey, William 100
 Casey, Barbara 8,40,48,49,57,58,81,82,106
 Casey, Timothy 8,41,77,82,106,109
 Cassidy, Maureen 48,49,57,59,100
 Christensen, Vickie 39,42,44,54,57,92
 Cleary, Kathy 60,96
 Coon, Alan 35,92
 Coon, Gloria 47,52,58,104,106
 Coon, Joseph 28,53,107
 Coon, Kandi 42,92
 Coon, Larry 23,96
 Coon, Partick 53,96
 Corning, Betty 38,92
 Corning, Jean 32,38,47,100
 Corton, Jerry 8,42,64,74,76,96
 Cottine, Betty 39,60,87,96
 Dallman, Rhonda 100
 D'Angelo, Cora 48,49,54,55,100
 Day, Deborah 38,58,107
 Day, Jean 8,42,48,49,51,96,100
 Day, Michael 72,73,92
 Day, Rosemary 96
 Decorah, Kay 27,28,52,58,107
 Decorah, Wayne 77,96
 Delmore, Debbie 8,41,42,46,57,59,61,100
 Delmore, Judi 8,40,46,57,58,82,107,116
 Delmore, Mary 57,60,92
 DeMerit, James 8,16,41,42,64,70,74,75,77,96
 DeMerit, John 8,9,41,45,64,65,70,71,74,75,77,85,107,117
 Dickerson, Elizabeth 38,42,49,54,60,92
 Dickerson, Sami 38,45,47,48,49,50,51,56,70,77,85,105,107,110,117
 Dickman, Dean 107
 Dickman, Ed 96
 Dickman, Linda 60,92
 Dinegan, James 64,100
 Dinegan, Mary 52,96
 Dittrick, Craig 68,77,107
 Dittrick, Jennifer 42,57,60,92
 Donnelly, Sharon 8,42,96
 Dorow, Carol 8,52,60,96
 Dorow, Connie 60,92
 Dorow, Dean 30,77,100
 Dorow, Marcia 8,40,52,57,60,97
 Doud, Donald 100
 Draper, Dennis 41,42,64,100
 Draper, Diane 43,57,60,81,92
 Droste, Herbert 12,97
 Dunahee, Dennis 38,64,70,74,77,100
 Dunahee, Ona 52,97
 Dunahee, Vickie 39,52,92
 Edgington, Harold 66,100,103
 Edmonds, Elizabeth 43,92
 Edmonds, Joe 7,20,51,70,97
 Edwards, Keith 8,40,64,67,68,100
 Edwards, Sandra 8,42,97
 Elderkin, Donald 92
 Elliott, Betty 52,107,109,113,114
 Elliott, Shirley 52,92
 Ennis, John 86,107
 Ennis, Michael 107
 Ennis, Peggy 60,92
 Ennis, Scott 64,71,72,77,97
 Ennis, Steven 45,64,70,72,73,77,100
 Erickson, Bonnie 16,54,97
 Erickson, Peggy 46,47,58,107
 Evans, Sharon 52,97
 Farber, Thomas 97
 Farris, Denise 60
 Farris, Jackie 49,52,55,60
 Farris, Owen 38
 Fay, Gary 14,34,48,49,54,56,70,76,101
 Field, Jane 49,60,93
 Field, Kathy 8,48,49,57,101
 Fisher, James 114
 Fischer, Karen 52,107
 Fish, Bob 97
 Fish, Sally 8,41,42,46,49,54,60,87,97
 Fitzgerald, Daniel 51,64,93
 Fitzgerald, Ed 30,101
 Flaminio, Sandra 54,47,60
 Follendorf, Carol 8,40,60,87,97
 Follendorf, Susan 101
 Foss, Charles 8,41,66
 Frier, Rita 93
 Gaffney, Mike 53,97
 Gaffney, Susan 8,40,113,114
 Gaffney, Tom 28,53,101
 Gaffney, Virginia 52
 Garlock, Pam 93
 Garton, Marie 58,108
 Garvin, Bridgedine 58,108
 Gasser, Mark 53,97
 Gavinski, Joh 69,104,108
 Gavinski, Robert 14,16,63,64,69,74,75,77,101
 Giebel, Debra 55,93,97
 Giebel, Robert 6,30,53
 Gill, Mary 48,49,54,55,100
 Ginther, Marcia 52,93
 Gissal, Bill 8,16,43,44,49,51,54,68,76,97
 Gissal, Mary 8,42,48,49,50,57,58,82,85,108,117
 Gneiser, Sharon 20,97
 Godlewski, Ed 18,108
 Goetz, Marcia 24,25,32,38,39,48,49,52,57,101
 Goodhue, Randall 70,97
 Grant, Lester 4,108
 Gray, Kenneth 93
 Gray, Philomena 8,40,48,49,50,54,57,59,100,101
 Gray, Rosanna 38,60,97
 Grey, James 45,47,77,84,108
 Green, Forest 101
 Green, Monte 97
 Greendeer, Conroy 77,100,101
 Greendeer, Terry 39,97
 Grefe, Frederick 64,93
 Grefe, Jeanine 59,60,93
 Grieves, Erick 93
 Griffin, Jeanette 28,108
 Guildner, Grant 42,93
 Gussel, David 8,9,26,41,64,70,77,81,82,87,108
 Gussel, Julie 8,13,38,42,97
 Hacker, Loretta 57,59
 Hagen, Kenneth 56,109
 Hagen, Theresa 48,49,51,55,101
 Hamburg, Debra 39,57,59,101
 Hamm, Jackie 42,97
 Hamm, Mark 39,43,93
 Hammerly, Cheryl 60,97
 Hammerly, Jane 25,57,59,101,109
 Hammerly, Judy 93
 Hammerly, Sue 52,109
 Harper, Jim 64,93
 Harrison, Victoria 31,44,46,48,49,57,59,101
 Hartman, William 28,53,64,72,73,109
 Hattle, Linda 28,46,55,109,114
 Hattle, Sherie 28,49,60,97
 Haynes, Richard 35,64,76,93
 Heaps, David 8,40,86,109,116
 Heding, Donna 93
 Hein, Alan 46,49,97
 Heinzelman, David 64,93,109
 Heinzelman, Robert 2,4,32,74,77,84,105,109
 Heisz, Barbara 8,43,46,49,60,97
 Helland, Kim 8,18,40,48,50,56,57,58,86,109,110
 Helland, Kristin 38,42,49,54,57,60,93,92
 Helland, Peter 8,14,40,49,64,69,76,97
 Helley, Donald 93
 Herman, Perry 64,101
 Hickethier, Pamela 39,59,60,93
 Hickethier, Peter 13,36,39,45,68,82,97
 Hilliard Jean 52,97
 Hofmann, Linda 8,18,41,60,97
 Holderman, Kenneth 53,101
 Holderman, Susan 8,109
 Holton, Charles 28,53,109
 Honish, Denise 42,60,93
 Honish, Mary 8,41,46,57,59,101,102
 Horkan, Marty 45,64,70,76,77,97
 Howley, Jeanette 52,55,93
 Hudzinski, Russell 70,97
 Huefner, Patricia 93
 Huffman, Dianne 52,93
 Huffman, Gerald 53,97
 Hurley, Mary 38,54,60,97
 Ives, Loretta 42,54
 Ives, Maria 25,40,54,57,59,93,101
 Jacobson, Cliff 101
 Jahn, Richard 35,97
 Jensen, Elaine 8,41,50,56,58,110
 Jensen, Marilyn 93
 Jensen, Phil 8,40,42,101
 Jobe, Susan 8,60,93
 Jobe, Margaret 42,52,60,97
 Jobe, Timothy 28,53,56,77,110
 Johnson, Pamela 8,32,38,40,42,48,49,57,59,61,91,101
 Johnson, Susan 8,42,54,57,60,61,97
 Johnston, William 39,53,93
 Jones, Bruce 110
 Jones, Diane 60,93
 Jones, Steven 4,110
 Joyce, Diana 42,60,93
 Joyce, Ellen 13,60,97
 Joyce, Peter 101
 Joyce, Sharon 54,57,59,101
 Joyce, Tim 28,45,53,72,73,77,101
 Kahler, Larry 64,72,81,101
 Kahler, Steve 64,74,75,77,110,118
 Kahler, William 64,69,77,81,110
 Kaiser, Bruce 8,41,42,48,49,66,70,74,77,85,110
 Kaiser, Gail 8,43,49,98
 Kaiser, Jane 6,39,60,93
 Kaiser, Joan 38,60,93
 Kalamarz, Donna 49,98
 Kaleas, John 38,43,93
 Kaminski, Jan 8,19,41,46,48,49,50,57,59,101
 Kaminski, Susie 43,92,93
 Kaminski, Teresa 3,8,27,38,39,41,42,43,48,49,50,52,55,58,110
 Kasdorf, Kathy 8,40,57,59,60,98
 Kelly, Margaret 48,49,52,55,57,86,102
 Kennedy, Michael 15,20
 Kesler, Dianne 38,50,110
 Kesler, June 39,102

Kieta, Donald 4,64,70,72,77,111
 Kimball, David 98
 Kimball, Kenneth 93
 Kimball, Margaret 8,40,54,60,98
 Kimball, Ruth 57,59,102
 Kissack, David 30,45,64,70,77,102
 Kivlin, Jim 64,70,76,77,81,98
 Klicko, Darrell 76,93
 Klicko, LaVerne 102
 Knox, David 46,47,48,49,51,56,66,84,111
 Knox, Jerry 49,54,64,94
 Knox, Tom 64,102
 Koehler, Gerry 40
 Krueger, Douglas 38,64,94
 Krueger, Guy 102,39
 Kruse, Diana 31,44,46,47,48,49,50,55,57,
 59,100,102
 Kurtz, Anna 94
 Kurtz, Marija 28,58,111
 Kurtzweil, Wayne 102
 Lackore, Steve 38,39,70,98
 Lapp, Kathleen 8,40,56,111
 Lapp, Marilyn 8,28,42,52,98
 Larson, Jim 6,15,53,98
 Larson, Mary 32,39,47,50,52,56,111,117
 Larson, Stanley 53,98
 LaVigne, Mike 98
 Leary, Mary 8,16,39,41,44,46,49,54,57,60,
 85,98
 Lebica, Charles 102
 Lebica, Mary 47,58,78,105,111,116
 Lebica, Paul 98
 Leege, Terry 30,102
 Leege, Timothy 67,69,77,78,111
 Lewis, Dennis 94
 Lonetree, Luther 77,102
 Lowe, Debbie 60
 Lowe, Marilyn 52,94,98
 Lowe, Patricia 55,111
 Lucke, Mary 8,40,49,60,98
 Lucke, Virginia 8,40,48,49,50,56,57,58,61,
 111,117
 Lueck, Christie 42,54,98
 Lueck, Dennis 111
 Lueck, James 7,24
 Luzazak, John 94,102
 Luzazak, Mary 60
 Lytle, Gregory 46,49,54,98
 Machovec, Mary 40,49,52,98
 Machovec, Patrick 94
 Marslender, Michael 30,45,68,72,102
 Mattei, Gary 76,94
 Mathews, Tarra 98
 Mathews, Trudee 102
 McFaul, Lawrence 8,42,64,98
 Meagher, Virginia 94
 Medo, Michael 8,40,45,47,50,56,66,67,77,
 84,111,117
 Meltz, Agnes 8,15,40,44,46,48,49,54,60,98
 Meyer, Larry 66,68,69,74,75,111
 Miner, Stewart 98
 Mitchell, Pat 28,36,45,47,53,111
 Molkentine, Chris 94
 Moon, Linda 16,39,102
 Murray, Lee 53,94
 Murray, Virginia 16,47,54,112
 Nagel, Bob 12,38,98
 Nagel, Emma 94
 Nehring, Linda 8,25,38,41,42,43,57,59,81,
 102
 Neises, Judi 52,58,112
 Nelson, Howard 4,67,102
 Nelson, Kay 6,94
 Neubauer, Marcia 41,54,60,81,98
 Neubauer, Tata 40,46,48,49,50,54,55,57,59,
 102
 Newman, Diana 8,16,25,38,39,41,42,43,50,
 56,112,117
 Newman, John 69,76,98
 Nichols, Kendal 8,29,43,53,94
 Novinski, Richard 112
 O'Brien, Ed 36,45,47,56,66,69,74,77,82,
 110,112,117
 O'Connell, Sharon 8,42,48,49,51,102
 O'Connor, Tom 8,18,41,70,98
 Olson, Ben 43,44,76,84,94
 Olson, Mike 98
 Olson, Randy 102
 O'Neil, Randy 30,82,112
 Paddock, Velva 94
 Page, Kerry 53,94
 Palmer, Cynthia 43,49,94
 Palmer, Randy 46,98
 Parchem, Bill 64,77,112
 Parchem, Patty 8,43,98
 Patten, Billi 18,112
 Payne, James 53,98
 Pearson, Charles 6,94
 Pearson, Michael 102
 Pearson, Pam 8,43,49,52,54,60,98
 Peasall, Freddie 94
 Pennington, Anne 38,59,60,98
 Pennington, Kathryn 5,47,50,58,78,81,112,
 117
 Peterson, David 53,76,94
 Peterson, Tim 64,69,74,98
 Pfister, Sharon 42,49,94
 Piekarski, Lynne 8,38,42,43,54,57,60,94
 Platt, Arnold 8,41,53,67,98
 Platt, Diana 55,57,59,102
 Poppie, James 94
 Priez, Douglas 31
 Ragan, Jack 112
 Ramer, Jack 8,39,40,43,53,64,92,94
 Reese, Betsy 8,38,39,41,42,44,47,105,112,
 116
 Reese, Lisa 8,38,41,43,46,60,98
 Reid, Mike 28,53,102
 Reidelbach, Barbara 8,42,49,60,87,98
 Reidelbach, Patty 8,43,48,57,59,102
 Reidelbach, Sharon 42,49,57,60,94
 Reineking, Susan 8,38,39,40,42,48,49,50,
 54,57,59,102
 Rhinehart, Chester 28,53,102
 Rhinehart, Dale 6,53,94
 Rhinehart, John 53,64,95
 Richter, Ginger 58,112
 Richter, Larry 98
 Riley, Rosanne 103
 Rodger, Lloyd 12,69,98
 Rodwell, Tom 42,64,76,95
 Roeker, Andy 24,67,103
 Roll, William 98
 Rubado, Candee 43,60,95
 Ryan, Barbara 8,42,60,99
 Scheer, Scott 4,5,8,38,41,45,85,112
 Scheer, Steve 5,8,38,40,45,85,103
 Schilling, Cindy 8,42,49,99
 Schroeder, James 14,45,103
 Schultz, Dale 99
 Schultz, David 103
 Schultz, Debbie 39,42,57,60,95
 Schultz, Donald 31,103
 Schultz, Lynn 20,55,57,58,113,117
 Schultz, Maria 8,40,42,99
 Schultz, Michael 8,64,76,99
 Schultz, Richard 54,56,102,103
 Schwark, Terry 60,95
 Schweda, David 53,99
 Schweda, Kenneth 24,31,37,56,66,70,77,
 113
 Schweda, Mike 28,53,113
 Schweda, Tom 28,53,113
 Scott, Daniel 64,72,77,113
 Shadof, Gail 60,99
 Shaffer, Debra 60,99
 Shaffer, Ronald 20,113
 Sheil, Debra 8,16,41,46,49,54,60,87,99
 Sheil, Linda 8,41,42,44,47,48,49,50,56,57,
 58,61,85,113,116
 Sickenberger, Karla 60,95
 Simonitsch, Anna 8,18,43,54,57,59,103
 Simonitsch, Mary 42,60,95
 Sine, Ollie 58,113
 Skarda, Nancy 8,40,57,59,103
 Smith, Sandra 87,113
 Smith, Scott 99
 Sobojinski, Diana 52,114
 Sobojinski, Robert 99
 Spatz, Sally 103
 Stacy, Diane 60,95
 Stacy, Joe 64,99
 Stanke, Linda 52,114
 Stannard, Bill 114
 Stanton, Doug 64,76,95
 Stanton, Grieg 18,99
 Stanton, Mary Lane 5,46,55,57,58,85,113,
 114
 Stecky, Walter 21,103
 Steele, Marilyn 99
 Stephenson, Kathy 8,24,40,48,49,57,58,114
 Stewart, Tim 8,43,64,76,95
 Stieve, Sandra 35,46,48,49,57,59,103
 Stone, Karen 95
 Storandt, Robert 3,23,24,28,45,50,53,66,
 77,104,114,117
 Stowell, Sue 114
 Stowers, Darcee 42,60,95
 Stowers, Darlene 57,59,103
 Stroede, Barbara 24,55,58,114
 Stroede, Gregg 53,95
 Stroede, Jeff 53,99
 Sullivan, Danny 95
 Sullivan, Kathleen 33,103
 Sullivan, Patty 95
 Sweeny, Dennis 46,64,74,77,114,117
 Sweeny, Michael 64,76,95
 Tallmadge, Randy 8,41,64,99
 Tallmadge, Roxanne 42,60,95
 Tatera, Jerry 23,44,45,50,56,66,85,115,
 116,117
 Teresinski, Bill 115
 Teresinski, Donald 99
 Thomas, Mrs. Dale 115
 Thomas, Donald 35,95
 Thompson, Kristin 17,49,54,60,99
 Thundercloud, Renee 24,46,52,58,104,115
 Timm, Allen 64,95
 Timm, James 64,99
 Tofson, Timme 64,70,74,77,99
 Tollaksen, James 8,43,64,76,95
 Tucker, Vickie 8,40,60,96,99
 Turner, Tod 38
 Utter, John 8,43,99
 Van Deuren, Paula 39,56,57,82,84,115
 Van Deuren, Peter 66,84,85,82,115
 Van Schoyck, Dennis 15,115
 Van Wie, David 45,84,104,110,115
 Van Wie, Elizabeth 49,54,60,87,99
 Velasquez, Magdalena 72,96,99
 Vogt, Thomas 115
 Voights, Dean 95
 Vokac, Edwin 115
 Volkey, Diana 57,59,103
 Wagner, Rhonda 50,115,117
 Walden, Bob 95
 Walker, Jane 8,9,35,40,47,48,50,57,59,61,
 82,103
 Walker, Mary 52,60,95
 Wampler, Tom 42,53,64,72,95
 Waydick, Robert 103
 Weber, Jaclyn 8,40,59,60,99
 Weber, Susan 42,44,60,92,95
 Weidling, Fred 53,99
 Weisner, Georgia 8,14,41,46,48,49,103
 Weisner, Julie 8,41,49,99
 Westerfeldt, Christopher 6,99
 Weyh, Keith 8,42,64,99
 Wharry, Patrick 115
 Wheeler, Steve 103
 White Eagle, Wilson 103
 Wickus Zoean 38,60
 Willard, John 8,41,42,56,64,85,103
 Williams, Vernon 95
 Wilson, Pam 42,60,95
 Wilson, Patricia 8,20,41,58,60,115,117
 Wimann, Bruce 8,26,41,103
 Wimann, Cindy 8,42,55,60,99
 Wimann, Jane 103
 Wimann, John 64,76,95
 Winchel, Rodney 70,99
 Wolfram, Jerry 30,103
 Wolfram, Toni 42,60,95
 Wood, Catherine 8,40,46,48,49,50,103
 Wood, Sylvia 42,95
 Zapuchlak, Mary 42,57,60,95
 Zahina, Carol 57,58,116
 Zelner, Kathie 24,47,52,58,116
 Zick, Maurice 116
 Zinke, Barbara 42,60,99
 Zinke, Beverly 8,39,42,43,60,95
 Zinke, David 38,44,56,82,85,116,117



