

The Arrow

1928



INSTRUCTOR OF INDUSTRIAL ARTS
KILBOURN HIGH SCHOOL

KILBOURN WISCONSIN

1924-1928

Harvey H. Haffle.
Oak Street.
Cedar Street.
Main Street.

PUBLISHED BY

The Students of the Kilbourn High School
Kilbourn, Wisconsin

VOLUME I

Staff

Editor-in-Chief—Felix Gnauck
Assistant Editor—John Heitman
Managing Editor—Clarence Mathews
Circulation Manager—Charles Van Wie
Chief Art Editor—Helen Loomis
Assistant Art Editors—Lucille Hayes, Francis
Botsford, Paul Fedderly
Activities—Mary Heibel
Senior Editor—Gordon Stuelke
Classes, Alumni—Faith Stevenson,
Wynifred White
Literary—Ruffina Neumeister, Norma Foster
Athletics—Ronald Drollinger
Humor—Millie Risley
Snapshots—Marcella White, Harold Hansen
Faculty Advisor—Aletha R. Thorngate

Foreword

We present this, our first issue of "The Arrow" with the hope that, in spite of its faults and shortcomings, it will be the source of many happy hours within its pages. We do not wish it to be merely a calendar of the school year, but, coupled with the facts it records, may it recall to you happy memories of the pleasant days spent at Kilbourn High School. If, from this book, any inspiration be received or any enjoyment be gained, we shall feel that our efforts are well repaid.

DEDICATION

IT is sometimes difficult to make words express the appreciation one feels for kind acts, friendly advice, and daily co-operation. There are many things of great value which wealth cannot purchase. Such are the treasures which have been given to us, the Students of Kilbourn High, by one who has been a source of inspiration and help, to all who have been privileged to come in contact with her benign influence. With deepest affection we dedicate this issue of The Arrow to,

Miss Mary Conway



MISS MARY CONWAY

CONTENTS † †

Scenic

Administration and Classes

Activities

Athletics

Literature

Humor



SCENIC



SILVER TONGUE

"River ever flowing by the stalwart trees,
Whither art thou going, broken by the breeze?
—How can we know what the Indian sees?"

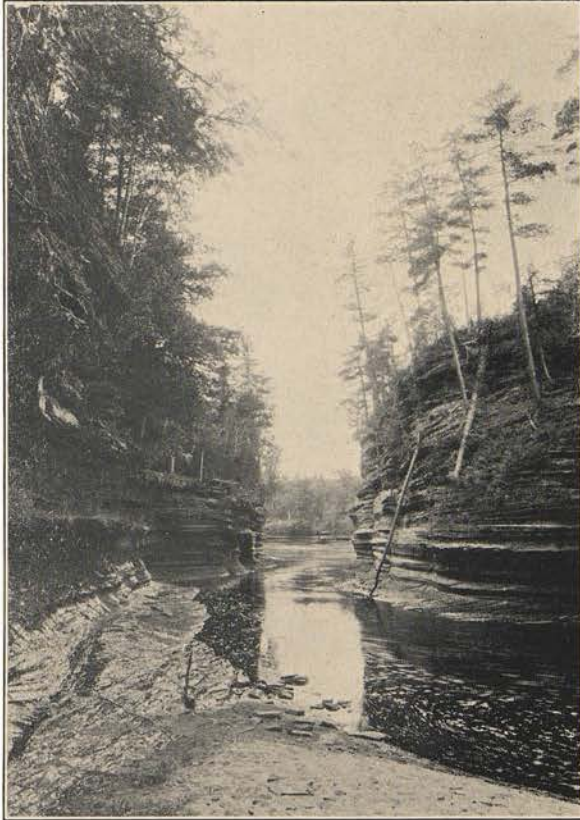




*Stand Rock in the Dells of the
Wisconsin River*

“Be it a weakness, it deserves some praise,
We love the play-place of our early days.”





*Steamboat Rock and
Lovers Lane*

Visions of beauty and class picnics have a place in the memory of all lads and lassies who spent their school days in Kilbourn at the Dells.





*The Narrows, 50 Feet Wide,
150 Feet Deep*

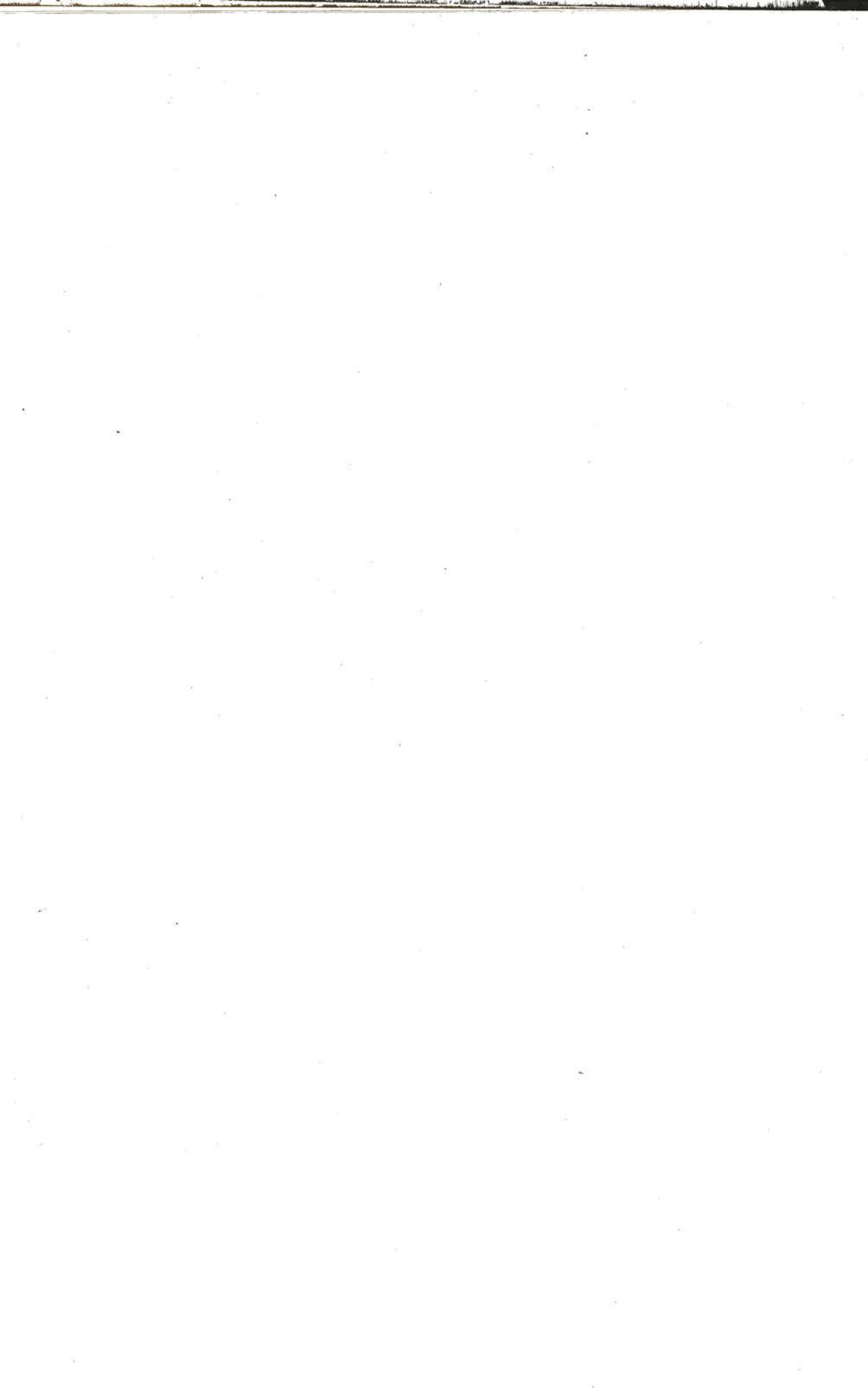
*Do we not feel about the old Wisconsin as
Wordsworth felt about the Yarrow:*

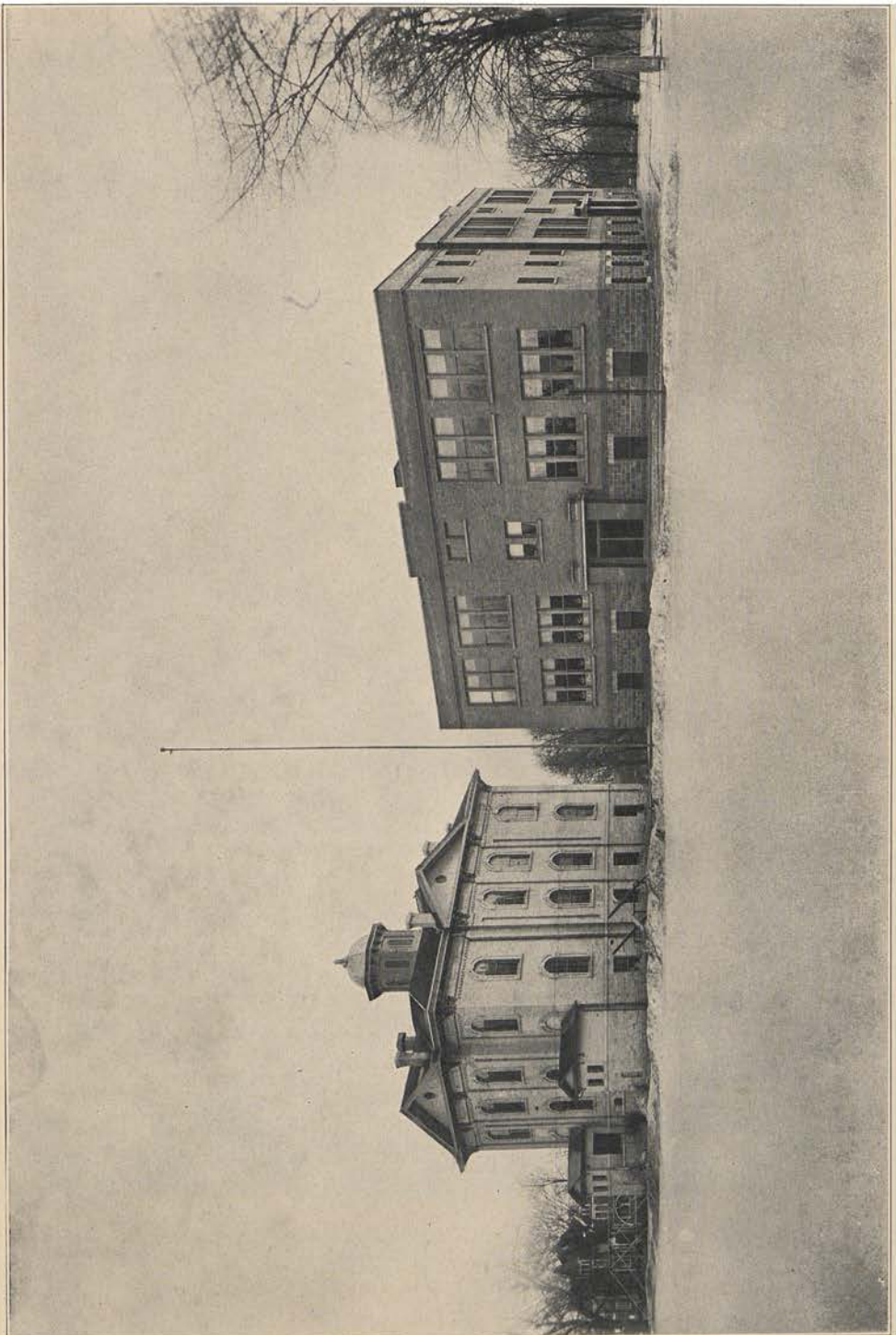
*“But that I know, where e’re I go,
Thine genuine image, Yarrow,
Will dwell with me; to heighten joy
And cheer me in my sorrow.”*





ADMINISTRATION &
CLASSES







OTTO W. TRENTLAGE
B. A. Lawrence College





Growth and Progress of K. H. S.

He who has a benevolent ruler has little use for an education in order to secure a mere livelihood, but he who wishes to share sovereignty and live the life of a freeman must be informed. Whether democracy preceded the school or the school preceded democracy, is as difficult to answer as that other question of the chicken and the egg. One thing is evident in both cases—without the one the other could not be. Improve either and the progress will be mutual.

Out of the schools of Europe came the constitution builders of America. The liberty-loving colonists saw the connection between knowledge and freedom and founded schools to make self-government endure. That idea was so germane that now a great self-governing state spans this continent. It was this same spirit that moved the first settlers to build a schoolhouse in Kilbourn in 1856. From this early beginning, freedom and education have cross-fertilized each other and have steadily progressed in Kilbourn.

In 1867 the people realized that their old building was inadequate and voted to purchase a whole city block and erect a school building modern in every detail, at a cost of \$13,737. That was a great sacrifice on their part to insure our freedom and to promote our welfare, and it has fulfilled its mission tolerably well. That sacrifice has been a pillar to progress for over half a century.

During that half century the enrollment has grown, the curriculum has been extended, and school activities have been added. At present there are over two hundred pupils in the grades and over one hundred fifty enrolled in the high school. In addition to the regular courses in literature, mathematics and language, the curriculum includes science, home economics and manual arts. The principal school activities are football, baseball, tennis, declamation, operettas, class plays and benefit movies.

The time is ripe for further development along these lines. A gymnasium, an auditorium and a commercial department are logical avenues of expansion. As soon as the community sees the need, these modern educational facilities will be added to the school system.

O. W. Trentlage





Faculty 1927-1928

Vivian E. Bunker, B. A.	-	-	History, English
Mary Conway	-	-	Mathematics, English
Frances Gates, B. A.	-	-	Latin, Science
Cheridah Krause	-	-	Domestic Arts
Ralph M. Ruehlman, B. A.	-	-	Geometry, Physics
Margaret Smiley, B. A.	-	-	Geography, Civics
Aletha R. Thorngate, B. A.	-	-	- English
Harvey W. Waffle	-	-	Manual Arts
Helen Felker	-	-	- Music
George E. Burdick, B. A.	-	-	Geometry, Physics
Otto W. Trentlage, B. A.	-	-	Mathematics





Utaian E. Bunker
B.A.



Mary Conway



Frances Yates
B.A.



Cheridah Krause



Ralph N. Ruhlman
B.A.

FACULTY



Margaret Smiley
B.A.



Aletha R. Thorngate B.A.



Harvey D. Vaffle



Helen Felker



George E. Burdick B.A.





Board of Education

Joint District No. 6, Towns of Newport, Dell Prairie
and City of Kilbourn City



A. W. LUETTGERODT, President



N. A. LANDT, Clerk



GEORGE FIELD, Treasurer





SENIORS





John Heitman—"Johnny"

"A parlous boy"

Hockey, 4; Class Play, 3, 4; Cheer
Leader, '28; Arrow Staff, '28

Eylene C. Haskins—"Ene"

"Gentle of speech, benificent of mind"

Corma F. Weidling—"Dimples"

"Bid me discourse, I will enchant thine ear"

Orchestra, 1, 2, 3, 4;
Public Speaking Club, 4; Glee Club, 1

John L. Foster—"Jahn"

"I know a trick worth two of that"

Football, 4; Baseball, 2; Class Play, 3, 4





Alden L. Helley—"Len"
"But for my own part, it was Greek to me"

Eleanor A. Van Ells—"Toady"
"Sweet mercy is nobility's true badge"
Orchestra, 1, 2; 3, 4; Glee Club, 1, 2, 3, 4;
Operetta, 3, 4; Class Play, 3, 4

Agnes K. Gaffney—"Agie"
"She was ever precise in promise keeping"
Class Play, 3, 4; Glee Club, 1;
Operetta, 1

Felix G. Gnauck—"Knox"
"Smooth runs the water where the
brook is deep"
Orchestra, 4; Glee Club, 2, 3, 4; Basketball,
2; Baseball, 2; Hockey, 4; Editor
Arrow Staff, '28; Operetta, 3, 4; Class Play,
3, 4; Class President, 4





Gordon A. Stuelke—"Zeke"
 "Young in limbs, in judgment old"
 Orchestra, 1, 2, 3, 4; Glee Club, 3, 4;
 Hockey, 4; Arrow Staff, '28; Pep Club Pres.
 4; Operetta, 3, 4; Class Play, 3, 4;
 Class Secretary, 4

Ruth Leege—"Ruttie"
 "As chaste as unsunn'd snow"

Ruffina M. Neumeister—"Ruff"
 "Knowledge is power"
 Orchestra, 3, 4; Science Club, 4

Keith R. Foster—"Upstart"
 "I'll not budge an inch"
 Orchestra, 1, 2, 3, 4; Glee Club, 1, 3, 4; Foot-
 ball, 3, 4; Basketball, 3; Hockey, 4;
 Operetta, 4; Class Play, 4





Joseph J. Wenkman—"Joe"

"This bold, bad man"

Football, 1, 2, 3, 4; Basketball, 2;
Orchestra, 1, 2, 3, 4; Baseball, 1, 2; Hockey,
4; Dramatics Club, 4; Class Play, 3

Inez Peterson—"Pete"

"And if it pleases you, so; if not, why so"

Orchestra, 1, 2, 3, 4; Glee Club, 1, 2, 3, 4;
Operetta, 3, 4; Class Play, 4

Millie Risley—"Mill"

"They are never alone that are accompanied
with noble thoughts"

Arrow Staff, '28; Class Play, 3, 4;
Class Treasurer, 4; Dramatics Club, 4

Thomas M. Vasey—"Mercey"

"As proper a man as one shall see in a
summer's day"

Orchestra, 3, 4; Glee Club, 3, 4; Football,
3, 4; Operetta, 3, 4; Class Play, 3





William W. Dingee—"Cutout"
"As merry as the day is long"
Orchestra, 3, 4; Football, 4

Alice C. Helland—"Al"
"Is she not passing fair?"
Class Play, 4

Marcella U. White—"White"
"The glory of a firm, capacious mind"
Orchestra, 2, 3, 4; Arrow Staff, '28; Glee
Club, 1; Class vice-president, 4;
Class Play, 4

Beulah I. Byers—"Bue"
"The mirror of all courtesy"
Class Play, 3, 4





Roger A. Cole—"Rog"
"Men of few words are the best men"
Orchestra, 4

Isabel I. Van Ells—"Izzy"
"The hand that hath made you fair, hath
made you good"
Orchestra, 1, 2, 3, 4; Glee Club, 1, 2, 3, 4;
Operetta, 3, 4; Class Play, 4

George P. Thompson—"Rabbit"
"I am sure care's an enemy to life"
Hockey, 4; Class Play 3, 4





Senior Class Officers

President	-	-	-	Felix Gnauck
Vice President	-	-	-	Marcella White
Secretary	-	-	-	Gordon Stuelke
Treasurer	-	-	-	Millie Risley

Class Colors
Silver and Blue

Class Flower
Sweet Peas

Class Motto

"The past forever gone, the future still our own"

Senior Class History

When we look back and review the events of the past four years, we remember how, as Freshmen, we entered Kilbourn High School with a class of fifty-four. We were accorded a little more than the usual amount of hazing, but recovered in time to attend a party given us by the Sophomores.

Our Sophomore year found us slightly fewer in number, but we made up for that in increased confidence. Later in the year, we secured due revenge for our earlier treatment by giving the Freshmen an initiation party that many of them will never forget.

When we entered our Junior year we were quite proud of our position as upper classmen, and our pride was justified by having our class gain prominence in all the activities of the school. During the winter we presented the play, "Green Stockings," which was acclaimed the best play ever produced by a Kilbourn High School class. We concluded the year with the Junior Prom, which was held at the Riverside Pavilion.

Our Senior year finds us at the close of four happy years of high school life, much of the success of which we owe to the forbearance and guidance of our principals, Mr. Mommsen and Mr. Trentlage, and our unusually fine and capable faculty. Members of the class have been especially prominent in school activities during their senior year. We were honored in having the president of the Pep Club, Gordon Stuelke, chosen from our class. Murray Vasey, another member, was sent as a representative from Kilbourn High to enter the All-State Chorus which sang during the Teachers' Convention at Milwaukee. First place in the local Oratorical Contest was awarded to Corma Weidling, and she will represent the school in the state contest. We can well be proud of the large number from our class who have been conspicuous both in the work of the Glee Clubs and Orchestra, and also on the Football team. The captain of this year's squad, Murray Vasey, is another worthy Senior. Our class play, "Miss Somebody Else," was very successfully presented late in March.

On May twenty-ninth the Senior class of '28 will be but a remembrance, but we shall endeavor to seize the opportunity implied in our motto, "The Past forever gone, the Future still our own."





JUNIORS





Junior Class Officers

President	- - - -	Charles Van Wie
Vice President	- - - -	Helen P. Ryan
Secretary	- - - -	Harriet Waterman
Treasurer	- - - -	Adolph Heineke

Class Colors
Roses

Class Flower
Old Rose and Silver

Class Motto
"Make the Best Better"

Junior Class Roll

John Brady *M.G.*
Langdon Brown *M.G.*
Frank Case
Ronald Drollinger *Grade*
Norma Foster
Marjorie French
Charles Glassl *Grade*
John Hanifin *M.G.*
Mary Heimel
Adolph Heineke *M.G.*
Edward Hendrickson *M.G.*

Helen Loomis
Norma Martin
Clarence Mathews *M.G.*
Hazel Montgomery
Donald Moon *M.G.*
Marcel Naber *Grade*
Ethel Nelson
Gertrude O'Brien *Lines*
Alma O'Connell
Hazel Peck *Lines*
Irene Peterson *Lines*

Gordon Ross *M.G. Lines*
Helen P. Ryan *Lines*
Reva Schoff *Lines*
Mary Smith *Lines*
Marion Thomm *Lines*
Mary Timm
Charles Van Wie *Lines*
Harriet Waterman *Lines*
Chester Weber *Lines*
Wynifred White
Ella Zinke *Lines*





Junior Class History

It was with vague ideas as to the future that the present Junior Class entered high school on a September morn in 1925. In a body, consisting of sixteen boys and twenty-three girls we were ready to tackle this new situation. Of course, the novelty has now worn off and we wonder at the ambition the Freshmen display.

The Sophomore class of that year gave us a thorough initiation. Later we returned the compliment with a Christmas party.

Even in our Freshman year we took an active part in outside school activities. This is shown by our representation on the athletic field as well as in the glee clubs and orchestra.

The year closed with a loss of five members. A condition of good will existed between the students and teachers.

Our Sophomore year was a large step in our progress. How much more dignified we felt. No longer could we be called the "green little freshies," and I'm sure we impressed this fact upon the minds of the Freshmen of that year.

Our class consisted, in this our second year, of twenty-two girls and sixteen boys. We organized our class under parliamentary rules with the aid of Mr. Waffle. This was to aid us in our Citizenship course.

During this year we had two parties and a trip to Madison. Perhaps the trip to Madison will linger longest in our memory, not only for the information gained, but also for the good time we had.

We still continued in upholding our part of the school activities. Among our class were some of the best men on the football field and in the basketball hall.

Our Junior class consists of fourteen boys and twenty-two girls. We had a new teacher in each subject. We regret that we could not have Miss Conway for one of our teachers, as we had planned. Nevertheless, she is ready to help us at any time.

We presented "Mammy's Li'l Wild Rose," a southern plot, for our class play. Much hard work and time was put on it, and it was highly complimented by all those who saw it. The members of the Junior Class feel that they owe this success to the untiring work of Miss Bunker, their class adviser.

It is the plan of the class to have their Junior Prom on May 25, 1928. It is to be a Spanish prom.

Our class is looking forward to a fourth year and to high school graduation, and is making plans for the future. Our motto is "Make the Best Better," and we are living up to it.





Junior Characteristics

<i>Name and Nick Name</i>	<i>Favorite Expression</i>	<i>Secret Ambition</i>
John Brady, Jack	"I don't know exactly."	To drive the Ford
Langdon Brown, Laddie	"I guess so."	To "get by"
Frank Case, Casey	"I didn't get it today."	To learn to dance
Ronald Drollinger, Jakie	"Now, listen here!"	To get some sleep
Norma Foster, Freckles	"Uh-huh! sure."	To have the highest honors in school
Marjorie French, Bill	"That was wrong."	To teach French
Charles Glassl, Zero	"Tell it to Sweeney."	To be heard
John Hanifin, Johnny	"I'm sorry but I can't."	To grow a mustache
Mary Heimel, Dolly	"Absolutely."	To be a great actress
Adolph Heineke, Monk	"Be'ah!"	To be able to write four two-hundred word themes in seven minutes
Edward Hendrickson, Eddie	"Oh! heck!"	To grow up
Helen Loomis, Bess	"Really?"	To wiggle her other ear
Norma Martin, Fluffy	"What's it to ya'?"	To be a flapper
Clarence Mathews, Slim	"I haven't much to say."	To travel widely
Hazel Montgomery, Monty	"I don't give a rip."	To be the world's champion hiker
Donald Moon, Mooney	"I forgot to do it."	To be an athlete
Marcel Naber, Nibs	"Dat's a fac"	To shoot three rabbits with one shot
Ethel Nelson, Susie	"I don't care."	To be a successful history teacher
Gertrude O'Brien, Gert	"Well—"	To be a second Fritz Kreisler
Alma O'Connel, Al	"I think so."	To be a lecturer on a Chautauqua circuit
Hazel Peck, Hado	"Gee, whiz!"	To attain high scholarship
Irene Peterson, Rene	"Oh, my!"	To be a stenographer
Gordon Ross, Gordie	"Yes, but—"	To be a great vaudeville actor
Helen P. Ryan, Pat	"Ain't we funny?"	To excell in letter writing
Reva Schoff, Reve	"I don't know but."	To go abroad
Mary Smith, Smitty	"Just a minute."	To grow slim
Marion Thomm, Tom	"Great Caesar!"	To be a court reporter
Mary Timm, Timmie	"Oh! Like so much."	To shake hands with Lindy
Charles Van Wie, Chuck	"You ought to see my Uncle Ike."	To play the bass drum in Sousa's Band
Harriet Waterman, Hattie	"You ole rip!"	To meet a tall man
Chester Weber, Abe	"Yah!"	To be a bond salesman
Wynifred White, Peggy	"Who cares?"	To regain my equilibrium
Ella Zinke, Blondie	"Oh, dear!"	To be a teacher







Sophomore Class Officers

President - - - Leslie Spence
 Secretary and Treasurer - - - Phyllis Herwig

Class Colors
 Cardinal and Gray

Class Flower
 Rose

Class Motto
 Vera, Honor et Scientia
 (Truth, Honor and Knowledge)

Sophomore Class Roll

Arthur Anderson *Th.G.*
 Kenneth Berry
 Lillian Billings
 Marian Billings
 Ida Christenson
 Mabel Dingee
 Esther Ekberg
 Paul Fedderly *Th.G.*
 Alice Gregerson
 Olaf Gregerson *Th.G.*
 Mary Hanifin
 Lucille Hayes
 Edmond Hendrickson *Th.G.*

Kenneth Herwig *Th.G.*
 Phyllis Herwig
 Gordon Herwig *Th.G.*
 Marjorie Knipple
 Rudolph Leege *Grade*
 Francis Leute *Th.G.*
 Henry Luetgerodt *Th.G.*
 Jennie Madland
 Mamie Madland
 Rosemary McManman
 Robert Morris *Grade*
 Ruth Morris
 Bernard Peterson *Grade*

Josephine Peterson
 Helen L. Ryan *Grade*
 Frances Schoff
 Cecelia Seger
 Celia Seger
 Leslie Spence
 Harryett Stein
 Faith Stevenson
 Lillian Tabbert
 Violet Tabbert
 Hilda Tofson
 Thelma Tofson
 Mary Waterman





Sophomore Class History

On September 7, 1926, fifty-three Freshmen entered the doors of Kilbourn High School. During the first six weeks of school five dropped out.

The organization of our class was delayed until after Christmas. At that meeting we elected our class officers. In early spring our president moved away and he was succeeded by the vice president.

In May we had a meeting at which we decided on a picnic at Cold Water Canyon. It was well attended by the majority of the class.

The next fall, 1927, we at once organized and elected new officers, with Miss Gates as our adviser. In September we defeated the Freshmen in a field meet.

During the following month we gave the Freshmen a party. They reported a good time, and to show their appreciation they gave the Sophomores a Christmas party.

Our Sophomore boys won distinction on the football team. Robert Morris, Paul Fedderly and Francis Leute were strong men in putting the games across.

The class leads in the musical activities of the school. One of our girls, Mary Waterman, was a delegate to the All State Chorus in Milwaukee at the time of the Teachers' Convention.

Our Sophomores were also prominent in the operettas of 1926 and 1927.

The Home Economics girls of this class are serving hot lunches to the largest number in the history of the school.

So Hurrah for the class of 1930!





Sophomore Characteristics

<i>Name and Nick Name</i>	<i>Favorite Expression</i>	<i>Secret Ambition</i>
Arthur Anderson, Art	"Doggone it!"	To be a deep sea diver
Kenneth Berry, Ken	"I should worry."	To be heard
Lillian Billings, Billy	"How should I know?"	To have a good time
Marion Billings, Marne	"Sufferin' dogs!"	To pilot an aeroplane
Ida Christensen, Ikie	"For cryin' out loud!"	To be a dress model in a New York Fifth avenue shop
Mabel Dingee, Pickles	"Oh, he's a flop."	To be an elocutionist on an eastern Chautauqua circuit
Esther Ekberg, Blondey	"Oh, keep still!"	To be a successful farmer's wife
Paul Fedderly, Herman	"Can't be bothered."	To attain oratorical leadership
Alice Gregerson, Al	"Oh, shoot!"	To become a countess
Olaf Gregerson, Ole	"Son of a gun."	To own a motor-cycle
Mary Hanifin, Mickey	"Don't take Latin!"	To fly to Paris
Lucille Hayes, Dimples	"Sure!"	To study art in Rome
Edmond Hendrickson, Porkie	"Heck!"	To deliver air mail
Kenneth Herwig, Ken	"Hey!"	To cruise the Mediterranean
Phyllis Herwig, Shorty	"Well, I don't know."	To be a famous toe dancer
Gordon Herwig, Goofie	"H'm."	To be a minister
Margerie Knipple, Marg	"Ye gods and little fishes!"	To compile a dictionary
Rudolph Leege, Rudy	"I don't know."	To be Chief of Police of Chicago
Francis Leute, Fran	"What?"	To meet a movie star
Henry Luetzgerodt, Hank	"Oh, gee!"	To fly to the North Pole
Jennie Madland, Jen	"Oh, boy!"	To "see America first"
Mamie Madland, Pete	"Oh, man!"	To be an opera singer
Rosemary McManman, Rosie	"Ain't I complimentary?"	To write a novel which would win the Nobel prize
Robert Morris, Bob	"Oh, heck!"	To be a bacteriologist
Ruth Morse, Billy	"Ho, cats!"	To read ancient literature
Josephine Peterson, Joe	"Oh, gee!"	To get slim
Bernard Peterson, Grit	"For cryin' out loud."	To exceed six feet
Helen L. Ryan, Pest	"Why bring that up?"	To study "Art"
Frances Schoff, Frank	Y'd be surprised	To get her hair bobbed
Cecelia Seger, Seal	"I'll be darned."	To be chief cook and bottle washer in a big hotel
Celia Seger, Cel	"Oh, shoot!"	To be a girls' gym director
Leslie Spence, Les	"Ouch!"	To dissect an elephant
Harriet Stein, Bingo	"Sufferin' cats!"	To get in the movies
Faith Stevenson, Steve	"Me eye!"	To do it right
Lillian Tabbert, Frenchie	"Darn it!"	To write a love story
Violet Tabbert, Fritz	"Why not?"	To own a Packard
Hilda Tofson, Hilly	"For Pete's sake!"	To be manager of a beauty shop
Thelma Tofson, Tofie	"Good gravy!"	To play violin
Mary Waterman, Murmur	"You half wit."	To be a Galli Curci





FROSH





Freshman Class Officers

President - - - Harold Hanson
 Secretary and Treasurer - - - Ruth Helland

Class Colors
 Scarlet and White

Class Flower
 Arbutus

Class Motto
 B2 and B y's

Freshman Class Roll

Elsie M. Almen
 Francis G. Botsford *M.A.*
 Dorothy Bullis
 Albert Cole *M.A.*
 Frances Cook
 Raymond Cook *M.A.*
 Helen David
 Clarice Drollinger
 Dorothy Foster
 Albert Gottschalk *M.A.*
 Albert Greenwood *M.A.*
 Evelyn Gregerson
 Bernice Hammond
 Harold Hanson *Graduate*
 Frances Haskins

Irene Hecock
 Howard Heitman *M.A.*
 Ruth Helland
 Lois Hendrickson
 Edith Herwig
 Walter Huefner *M.A.*
 Anna Julson
 Josephine Laabs
 Thadeus Leute *M.A.*
 Arthur Marlow *M.A.*
 Corinne Marston
 Celeste McManman
 Geraldine Morris
 John O'Connell *M.A.*

Edna Peck
 Sylvia Peck
 Ruth Rohrbeck
 Esther Rohrbeck
 Norman Schultz *M.A.*
 Frances Schweda
 Henry Shepard *M.A.*
 Eunice Simons
 Margaret Swansby
 Marie Thomm
 Carl Timme *M.A.*
 Frances Trumble
 Marcus Trumble *M.A.*
 Harold Walker *M.A.*
 Louise Walther





Freshmen Class History

On the sixth day of September, nineteen hundred twenty-seven, fifty eager Freshies began their career in the Kilbourn High School.

We were all bashful boys and girls, so we flocked together timidly as we entered the building.

After school was called to order we were told to go to the room in which our first class was assembled, but of course some went into the wrong room and this caused laughter and embarrassment.

Miss Conway was our class adviser. Through her direction we developed a class consciousness and took some steps toward organization. We elected Harold Hanson as president of the class and Ruth Helland as secretary. Time has proved the wisdom of our choice of officers. Later we chose our motto, "B2 and B y's," and our class colors, scarlet and white, symbols of our motto for dignity and wisdom.

Early in October the Sophomores gave us a party at which we thought we were doomed to be unpleasantly initiated, but to our surprise, we were treated with great courtesy and consideration.

In December the Freshmen gave the Sophomores a return party in which every Freshman appeared in some capacity as host or hostess to our guests. A literary program was followed by dancing and card-playing. At this date we were better acquainted and both Sophomores and Freshmen seemed to have a good time.

We have several talented actresses in our class, some of whom have already appeared in dramas before the high school. We also have gifted musicians among us who have taken a leadership in musical activities of the school. Our boys were recognized as valuable additions to the football team.

We have made great progress in the thinking process. "Find it yourself" in library work. Numerous readings in science, accuracy and persistency in algebra, as well as in manual training and domestic science, have all conspired to train our minds.

We learned in our English class that green comes from the same Danish root as growing, so we may be green but we are growing.

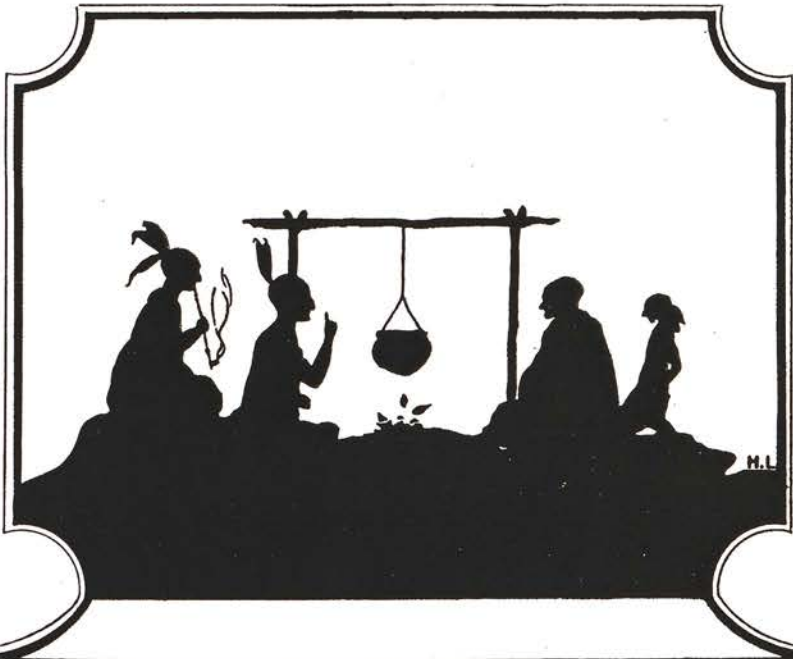




Freshman Characteristics

<i>Name and Nick Name</i>	<i>Favorite Expression</i>	<i>Secret Ambition</i>
Elsie Almen, Goggles	"Oh, heck!"	To be a ballet dancer in Ringling Brothers circus
Francis Botsford, Bill	"I don' wanna."	To be able to impersonate Sam 'n Henry records
Dorothy Bullis, Dot	"Oh, boy!"	To get a job in Kilbourn Events office
Albert Cole, Cole	"H'm."	To become a broker in the New York stock exchange
Francis Cook, Slim	"Aw."	To make rolls like mother used to make
Raymond Cook, Pokey	"May-be."	To study love making in a fiction magazine
Helen David, Handy	"Well, gosh!"	To equal Mary Pickford
Clarice Drollinger, Sis	"Oh, your eye!"	To find a new excuse
Dorothy Foster, Dot	"Tee, hee."	To become a first class vamp
Albert Gottschalk, Snitto	"That's a fake."	To prove science is wrong
Albert Greenwood, Al	"Oh, you don't say."	To become a great tree surgeon
Evelyn Gregerson, Ev	"Oh,, heck!"	To be a nurse
Bernice Hamon, Berny	"Good, gosh!"	To be famous some day
Harold Hanson, Dude	"Oh, that's stale."	To be a sword swallower
Frances Haskins, Spanolia	"Oh, is that all?"	To be the teacher's pet
Irene Hecock, Peacock	"My goodness!"	To study hypnotizing in India
Howard Heitman, Shorty	"Shut-up!"	To entertain the Super Six
Ruth Helland, Ruthy	"Got your algebra?"	To make a lot of dates
Walter Huefner, Walt	"You know your onions."	To get a permanent job as Santa Claus
Lois Hendrickson, Yoits	"Sh! don't tell anyone."	To get by with it
Edith Herwig, Wiggie	"May-be."	To be able to play pinochle
Anna Julson, Cookie	"Try and find out."	To make a hit
Josephine Laabs, Joe	"Oh, dear!"	To study art in Paris
Thaddeus Leute, Teddy	"Keep still."	To get rid of that school girl complexion
Arthur Marlow, Art	"Well!"	To be a dancer
Corinne Marston, Newsie	"What's it to ya?"	To be able to appear innocent
Celeste McManman, Shaggy	"I'll bet a cookie."	To be a toe dancer in the Chicago Opera House
Geraldine Morris, Jerry	"Good night."	To succeed
Edna Peck, Skeezix	"What's the use?"	To look wise
Sylvia Peck, Buttercup	"You make me laugh"	To become an official jumping jack
Ruth Rohrbeck, Pinky	"You think you're smart"	To get home early for once
Esther Rohrbeck, Es	"All right!"	To be a heroine
Norman Schultz, Germany	"Aw, what's the use?"	To escape being a bachelor
Frances Schwede, Sweetie	"Oi, oi, I'm leffing."	To be able to laugh
Henry Shepard, Hank	"Keep still!"	To work hard to get out of work
Eunice Simons, Useless	"Hurrah for our side!"	To have a long list of "Boy Friends"
Margret Swansby, Maggie	"You'd be surprised!"	To become a College Professor
Marie Thomm, Fritz	"That's telling."	To become wealthy
Frances Trumble, Weed	"Oh, gee whiz!"	To make a passing grade
Marcus Trumble, Sleepy	"Ha, ha!"	To find a curl remover
Harold Walker, Walk	"By cats and little kittens"	To spring a good joke once





ACTIVITIES



The Thespian Club

President - - - Helen Loomis
 Secretary and Treasurer - - Wynifred White

Mabel Dingee	John Brady
Mary Waterman	John Hanifin
Geraldine Morris	Gordon Ross
Millie Risley	Joe Wenkman
Phyllis Herwig	Gordon Ross
Harriet Stein	Wynifred White
Helen Loomis	Rosemary McManman
Josephine Peterson	Celeste McManman
Eunice Simons	Mary Hanifin
Faith Stevenson	Harold Hanson

The Thespian Club was organized for the purpose of giving the students a chance to prove their dramatic ability and to inspire self-confidence in them when asked to address a public gathering. Due to the fact that the club is still in its infancy, it has been unable to present any large plays, but is confining its efforts to one act plays by way of preparation for next year.

The club has sponsored three one-act plays: the first was "A Pair of Lunatics," a farce, in which Gordon Ross and Eunice Simons took part; the second, "And the Lamp Went Out," a comic pantomime, was given by Helen Loomis, Millie Risley, Faith Stevenson, Wynifred White, Gordon Ross and Joe Wenkman; the third, "The Somnambulist," in which Mary Waterman, Geraldine Morris, Mable Dingee, John Hanifin and Harold Hanson made up the cast. The Thespians hope to give one or two more short plays before the year is over.

In addition to the dramatic work itself, the club is working on a theatre model which is to be used for advertising any play by the high school.





Public Speaking Club

The Public Speaking Club was organized at the beginning of the school year 1927-28. Its purpose is to promote an interest in declamation and oratory, and develop a desire among its members for further effort along these particular lines of dramatic work.

A contest was given at the close of the first semester at which the members of the club had an opportunity to show their ability in this field. The contestants with their selections are as follows:

Mary Smith	-	-	-	-	Melody
Harriet Waterman	-	-	-	Private Morphy's Romance	
Helen P. Ryan	-	-	-	The Mourning Veil	
Mary Heimel	-	-	-	Song of Dusk	
Helen L. Ryan	-	-	-	The Bishop's Letter	
Corma Weidling	-	-	-	The Unfit	
Marjorie French	-	-	-	Poe's Raven in an Elevator	

The judges, Mr. Van Dyke, Mrs. Landry and the Rev. Mr. Davies, all of Klbourn, awarded first place to Corma Weidling and second honors to Mary Smith. These contestants will enter the district declamatory contest and if successful there will be eligible for the state contest.

The attention of the club for the second semester will be turned to the mastery of shorter readings and declamations.





Nature Club

President	-	-	-	Albert Greenwood
Vice President	-	-	-	Henry Luetterodt
Secretary and Treasurer	-	-	-	Ella Zinke

The Nature Club was organized in the fall of 1927 for the purpose of studying trees, birds, animals and other interesting phases of nature study. A committee, composed of the president, vice-president, Ruth Morse, Kenneth Herwig and Frances Schweda, plan the weekly programs.

The Club has subscribed for the Nature Magazine and has joined the American Nature Association. Interest has been taken in a campaign concerned with the conservation of natural resources as wild flowers, forests and streams, and including a study of the defacing of rock formations by unsightly markings such as tourists' signatures. Some members have studied microscopic water animals. A few hikes have been taken and more are planned for the spring.

It is hoped that the efforts of the Club may be instrumental in encouraging a deeper appreciation of nature and a wider acquaintance with its different forms.





Boys' Glee Club

"The power of music begins where words leave off"
—LONGFELLOW

Francis Botsford
Ronald Drollinger
Paul Fedderly
Teddy Leute
Bernard Peterson
Norman Schultz
Keith Foster

Charles Glassl
Felix Gnauck
Albert Gottschalk
Leslie Spence
Gordon Stuelke
Murray Vasey
Charles Van Wie

Accompanist - - - Norma Foster

The Boys' Glee Club is a new venture in the musical life of Kilbourn High School. It is yet in the beginning stages but there is promise of a bigger and better club for next year. Most of the boys had parts in the operetta, "College Days," and gave freely of their time and co-operation to help make it a success.

Four of the members, Murray, Ronald, Keith and Felix, made up our "K. H. S. quartette," and gave several interesting numbers for programs.

The Club was pleased to send Murray Vasey as a representative from Kilbourn High to participate in the all-state chorus of 400, which performed November 6, 1927, at the State Teachers' Convention held in Milwaukee.





Girls' Glee Club

"Music, when soft voices die, vibrates in the memory"

The members, twenty-five in number, of the Girls' Glee Club have met for weekly rehearsals throughout the year, aiming always for the best interpretation of the music studied.

The group manifested their willingness to work and co-operate when "College Days" was presented and gave pleasing numbers for the Christmas program, the Declamatory Contest, Baccalaureate and other programs during the year.

Like the Boys' Glee Club, the girls were glad to have one from their group, Mary Waterman, sing in the all-state chorus which performed at the State Teachers' Convention held in Milwaukee in November.

Tuesday evening of the week of Christmas the girls enjoyed a two hours round of "carrolling." We are sure they gave much happiness to many and helped to spread the Christmas spirit.

The members of the club are:

1st Sopranos
Helen Loomis
Celeste McManman
Isabel Van Ells
Mary Waterman
Geraldine Morris

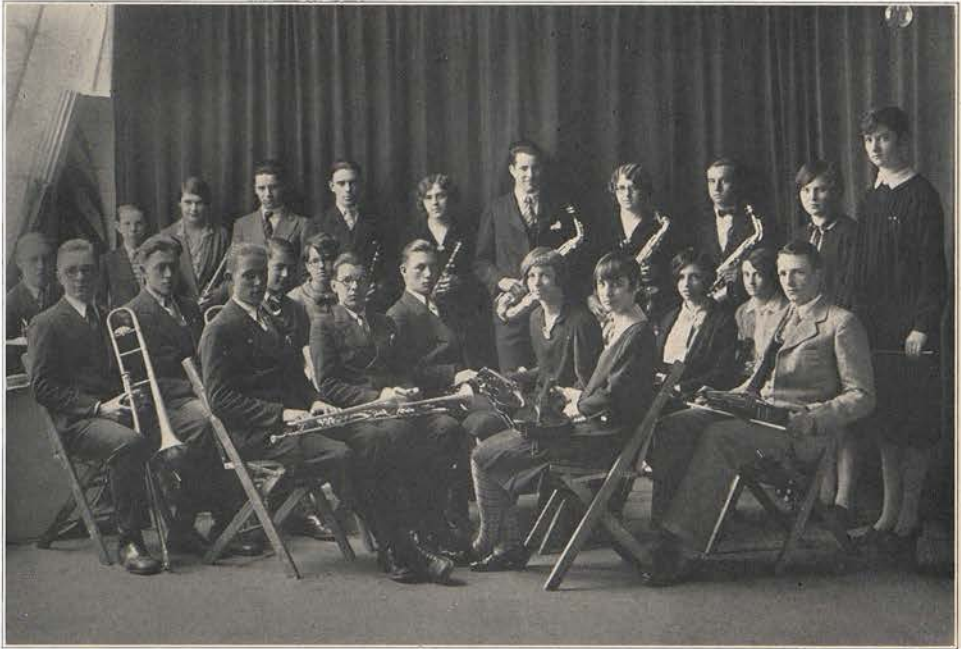
2nd Sopranos
Mary Heimel
Marjorie Knipple
Rosemary McManman
Josephine Peterson
Frances Schweda
Mary Smith
Lillian Tabbert
Wynifred White

Altos
Clarice Drollinger
Corinne Marston
Inez Peterson
Harryett Stein
Eleanor Van Ells
Harriet Waterman

Accompanist

Norma Foster





High School Orchestra

"Such sweet complusion doth in music lie"
—MILTON

The high school orchestra has been putting forth every effort this year toward a symphonic effect rather than a band atmosphere. Weekly rehearsals have been marked with enthusiasm and members have been interested in trying out new harmonies, which make for a keener and more thorough understanding and appreciation of music. Among the selections studied during the year are: "Largo from Xerxes," Handel; "Gloriana Overture," Weidt; "After Sundown," Friml; "Blue Danube Waltzes," Strauss; and "Ballet from Rosamonde," Schubert.

The orchestra has played before the public on several occasions: for the operetta, "College Days," for the school movie, "Robin Hood," for class plays, Commencement and "Music Revue".

At Christmas time all the members enjoyed an hour of surprises.

The personnel of the orchestra is as follows:

Violins
Corma Weidling
Murray Vasey
Inez Peterson
Marcella White

Cornets
Joe Wenkman
Keith Foster (Sec.-Treas.)
Gordon Stuelke (Pres.)
Ruffina Neumeister
Ronald Drollinger

Flutes
Marjorie French
Bernard Peterson
John Hanifn

Clarinets
Eleanor Van Ells
Marcel Naber

Saxophones
Isabel Van Ells
Langdon Brown
William Dingee

Piano
Norma Foster

Trombones
Felix Gnauck
Roger Cole

Xylophones
Helen Loomis

Drums
Charles Van Wie





OPERETTA "College Days"

"Are you ready?
We are!
Then let 'er go!
Hoo-rah! Hoo-rah! Brinkdale! Brinkdale!
Rah! Rah! Rah!"

Such was the snap, the pep, the spirit which marked "College Days" from the opening note through to the close of the final scene.

Murray Vasey, as Davy, wins the game for Brinkdale by knocking a home run. After this excitement dies down he finds a few minutes alone with Prexy's daughter Dot—Helen Loomis—whom he loves.

But the villain, Chauncey de Forest—Ronald Drollinger—loves Dot too, so he, with a local pool room proprietor—Felix Gnauck—plots to have Davy accused of framing to throw the final game, which is yet to be played. Their plans mature rapidly and as a result Davy leaves the college in disgrace.

After two years passes, de Forest confesses to Tubby—Keith Foster—of his wrong doing, who in turn writes it to his sweetheart—Mary Waterman—who is Dot's chum. Davy comes back a hero, "Prexy," President of Brinkdale—Gordon Stuelke—proclaims a holiday in their honor. Dot begs Davy's forgiveness, and all ends happily.

There is pretty romance between Tubby and Helen—Mary Waterman—lots of spice from Baldy, Dean of Women—Eleanor Van Ells—and Prexy, while the chorus and other characters helped to give the play its collegiate atmosphere.

"College Days" was presented on the nights of November 16-17 at the Mission Theatre by members of the Girls' and Boys' Glee Clubs under the direction of Miss Felker.

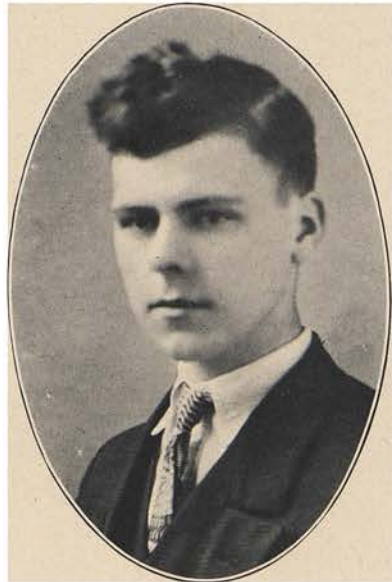




Arrow Staff



FELIX G. GNAUCK
Editor-in-Chief



CLARENCE E. MATHEWS
Business Manager



JOHN D. HEITMAN
Assistant Editor



CHARLES VAN WIE
Circulation Manager





The Arrow Staff

Can You Beat It?

A Kilbourn High School Annual? Yes.
A venture new and bold.
The Staff, a choice of Faculty—
An easy task foretold.

The Business Man and Editor
Can stroll about at will,
They hold a conference anywhere,
The rest of us keep still.

Together they rave and roar and howl.
Our slowness is a fright!
And we drudge and work and toil
All day and half the night.

We scarcely stop to eat or sleep,
Nor see a show or dance.
We find no time to study, and
Report Cards say---"Perhaps."

And then at last Our "Arrow's" done.
And tired? You would think it.
But Knox and Shorty strut around
And say—"Hey, Can You Beat It?"

F. G. G.







JUNIOR CLASS PLAY "Mammy's Li'l Wild Rose"

Directed by Miss Vivian Bunker

CAST

Daniel French—From the city	Ronald Drollinger
Lester Van—Daniel's chum	Charles Van Wie
Wade Carver—An unwelcome suitor.....	Charles Van Wie
Orpheus Jackson—A native Romeo.....	Charles Glassl
Old Joe—"Dat's a fac'"	Marcel Naber
Rose O'May—Mammy's Li'l Wild Rose.....	Mary Heimel
Mammy Celie—A black treasure.....	Norma Foster
Hester O'May—Rose's maiden aunt.....	Hazel Peck
Peggy French—Daniel's sister	Wynifred White
Letty Van—Peggy's chum	Marjorie French
Babe Joan—A mountain charmer.....	Mary Smith
Mrs. Courtvane—A lonely woman.....	Ethel Nelson

The entire action of the play takes place in the cabin dooryard of Mammy Celie and Uncle Joe in the Virginia mountains. Rose, an orphan, has been brought up by her Aunt Hester, an aristocratic, but austere maiden lady of the Virginia mountains. The love which the little girl craved has been given her by Mammy Celie. To retrieve the family fortune, Miss Hester has betrothed Rose to Wade Carver, a wealthy, but hard-hearted neighbor. Daniel French, from the city, meets Rose by chance, and romance comes quickly. Letty and Lester Van, friends of Daniel French and his sister Peggy, help to bring about a very complicated tangling of the plot.

A fine laugh is provided throughout by Orpheus and Babe, two mountain rustics, and their sons Cavalier and Cumberland.





EIGHTH GRADE—Ray Cone, Marjorie Davies, Conrad Caffney, Ethel Hanson, Catherine Heineke, Adaline Kaleas, Julia Kaleas, LeRoy Liessman, Henry Marston, Roy Mathews, Ruth Mulligan, Harry Olson, Betty Orthman, John Ryan, Laurie Soma, Mary Timlin, Gordon Tollakson, Irene Seger.



SEVENTH GRADE—Dorothy Belter, Hazel Belter, Bernice Berndt, Eutella Borchter, Ray Boynton, Helen Bullis, Wilmon Drollinger, Madeline Gottschalk, Kenneth Harrison, Jack Heibel, Ervin Johnson, Sara LaVigne, Frances Leege, Esther Newell, Herbert Peterson, Thorald Peterson, Agnes Schmidt, Robert Seger, Beatrice Soma, Glendoria Stephan, Merton Tofson, Russell Tollakson, Robert Van Wie, Vincent Williams.





DOMESTIC SCIENCE ROOM



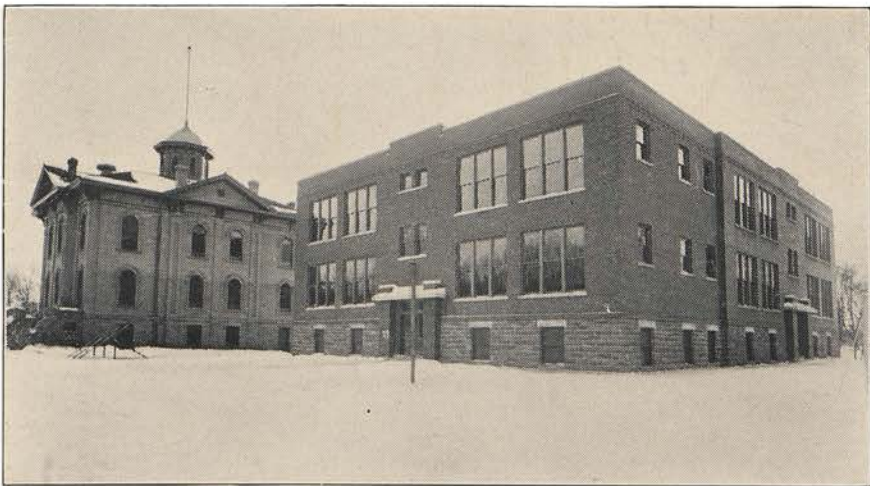
MANUAL ARTS SHOP





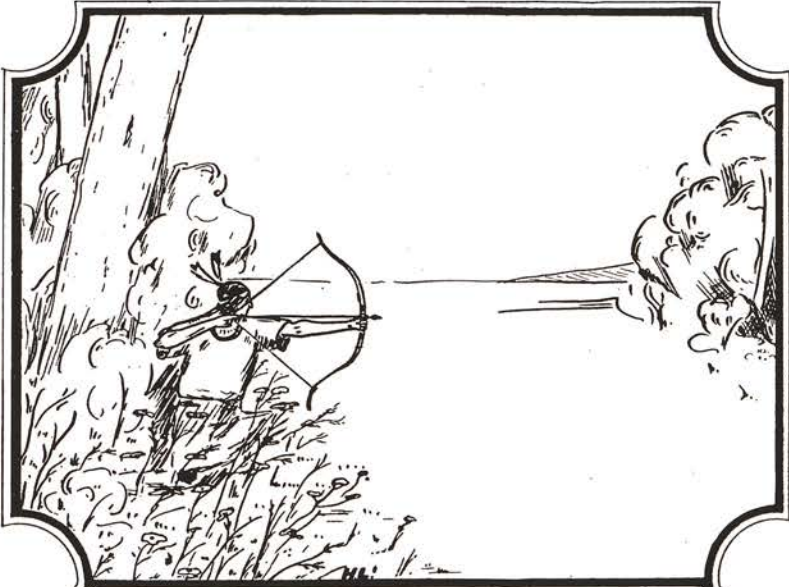
MR. PROCHNOW

Mr. Prochnow has been an important factor in the success of the school year. His skill in the furnace room has kept us warm in the classroom. The pleasure we felt each morning upon entering a clean, sanitary building resulted from his faithful service. These two duties have been so well performed that our memory of him will be always a pleasant one.

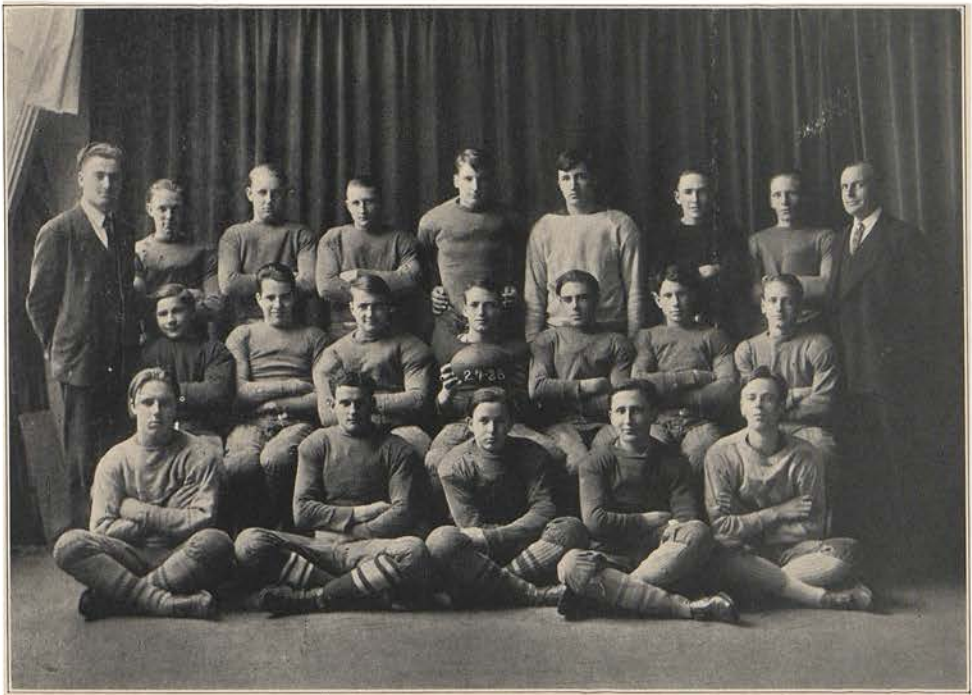


KILBOURN PUBLIC SCHOOLS IN 1928





ATHLETICS



Football Team

Top Row

Coach Burdick
Keith Foster, End
Charles Van Wie, Tackle
Charles Glassl, Guard
Paul Fedderly, Center
Adolph Heineke, Full Back
Frank Case, Guard
John Foster, End
Prof. Otto Trantlage

Center Row

Francis Leute, Quarter
William Dingee, Half Back
Ronald Drollinger, Half Back
Murray Vasey, Tackle (Capt.)
Marcel Naber, Half Back
Henry Shepard, Half Back
Robert Morris, Quarter

Bottom Row

Albert Greenwood
Chester Weber
Gordon Ross
Albert Gottschalk
John Heitman





Athletics in Kilbourn High School

The question of athletics involves three points of view held by three different classes of people, as I have recently observed. The first is composed of two groups—(a) disinterested grownups who say, "Well, if the school board will pay for the supplies and the young folks wish to take things into their own hands, why, let them; only please don't bother us;" and (b) kindly old ladies and gentlemen who never did such things in their day, but who cast a benevolent eye upon the rising generation of future presidents (and presidents' wives) and who are perfectly willing to concede that times have changed.

The second class consists mainly of fathers with a 60c-an-hour income and six or a half dozen children for whom to pay doctor bills and buy tennis shoes, bats, balls, racquets, chest protectors, and baseball suits. They're not going to buy balls for someone's else kids to cart off and lose, if they can possibly get out of it.

The third and most important class is made up of the student body and this also has two divisions:

(a) The floating mass of spineless jellyfish who drift lifelessly on to destruction without knowing, and possibly without caring, what they are headed for until some one comes along, jerks them into an upright position and tells them to realize what they are doing to themselves.

(b) A consolidated, concentrated, enterprising group, all life and energy, always on the alert for some new way to drive the teachers to distraction. These qualities are a fine thing if carefully handled, but wherever there is misdirected energy there is sure to be an explosion sooner or later and some one is likely to get hurt.

The need for athletics is urgent. Give a child a book and say to him: "Be good and some day you may be president;" ten to one if he is a real boy he will answer you:

"Why, there is only one man in 93,000,000 who is lucky enough for that, and I was born on Friday, the thirteenth of June."

But give him a baseball and bat and tell him that some day he'll be Home Run King for the Chicago Cubs, and ninety-nine times out of a hundred he'll say:

"Sure thing! Give me half a chance and watch this bird develop his wings."

Of course a country like ours cannot exist with brawn and no brains, but how much better is an educated athlete than the president who dies two weeks after his inauguration because of overeating and under-exercising.

The parent is criminally negligent who expects his son to study all day in an ill-ventilated school house and then, at an hour when he ought to be playing hard and breathing good fresh air, lets him kill time in a pool hall full of tobacco smoke because there is practically nothing else for him to do. As for the man with the half dozen children and the 60c-an-hour income—well, in any case, the price of six pairs of tennis shoes fades into nothingness when compared to the price of six cases of T. B.

As a student in Kilbourn High School, I ask the citizens of Kilbourn to give this matter a thought before it is too late.

Ruffina Neumeister '28





Athletics

Athletics in the high school at the present time is limited. The entire student body has little or no chance to participate in any sport. This is due to our lack of a gymnasium. In the fall we had physical education, but when cold weather began it became necessary to discontinue it. Basketball has also been dropped for the first time in many years. Football and baseball are the only two sports in which students are able to take part. Tennis will probably be played in the spring, and baseball, discontinued last year, will again be offered if present plans work out.

The football team this last season was only partly successful. Our new coach had twenty-five men at the beginning of the season, but they dropped out until there were only about fifteen left. Kilbourn played six games, losing four, tying one, and winning one. The team suffered from injuries and lack of material. For winning our last game Coach Burdick gave the team a turkey dinner at which we elected our new captain, Adolph Heineke. Captain Vasey, Coach Burdick and Captain-elect Heineke gave short talks. Heineke, a two-year man, played right end last year and full back this, and played his position well. We expect great things from Monk next year. Kilbourn has good material and should have a good team.



Football Games

KILBOURN—REEDSBURG

Kilbourn played its first game of the season at Reedsburg. The team was in good shape at the time. The first half was a punting duel with neither team gaining any advantage and ended with no score for either side. Reedsburg came back strong in the second half and scored a touchdown after a long run by her quarterback. They failed to kick goal. The rest of the game was featured by long runs by Davies of Reedsburg resulting, however, in only one more touchdown for the opposing team. The game ended 12-0 in favor of Reedsburg.

NECEDAH—KILBOURN

The second game of the season was played at Kilbourn with Necedah. Kilbourn made a very poor showing the first half, which ended 6-0 in favor of Necedah, who scored on a pass. Kilbourn came back with a rush and scored in the third quarter. Some real line plunging by Heineke featured the rest of the game. Neither team had kicked goal, so the final score was tied at 6-6 and the home team, though failing in victory was somewhat encouraged in knowing that they had played good football in the second half.

KILBOURN—MAUSTON

The team next went to Mauston, hoping to make up for their bad start. They were given the surprise of their lives. Mauston had not been beaten and started out strong against the Kilbournites. They scored two touchdowns in the first quarter and from then on it was all Mauston. The two teams played evenly in the third quarter but Mauston came back strong in the last quarter and scored easily. The game ended 25-0 in favor of Mauston.





NEW LISBON—KILBOURN

The next game with New Lisbon was Kilbourn's Homecoming. The night before the game a large bonfire on the school grounds and a peppy parade through town served to arouse plenty of enthusiasm and spirit for the conflict the following day. The game was played without the services of several of our best men and the team was weakened noticeably. Coach Burdick had shifted the line up considerably. The New Lisbon team kicked off to Kilbourn and after an exchange of punts New Lisbon recovered the ball in Kilbourn's territory and scored in the first quarter. Kilbourn came back strong in the second quarter and almost scored. The ball lay on New Lisbon's one yard line as the half ended with the score 6-0 in favor of New Lisbon. Neither team could score in the last half and the game ended 6-0 with Kilbourn on the short end.

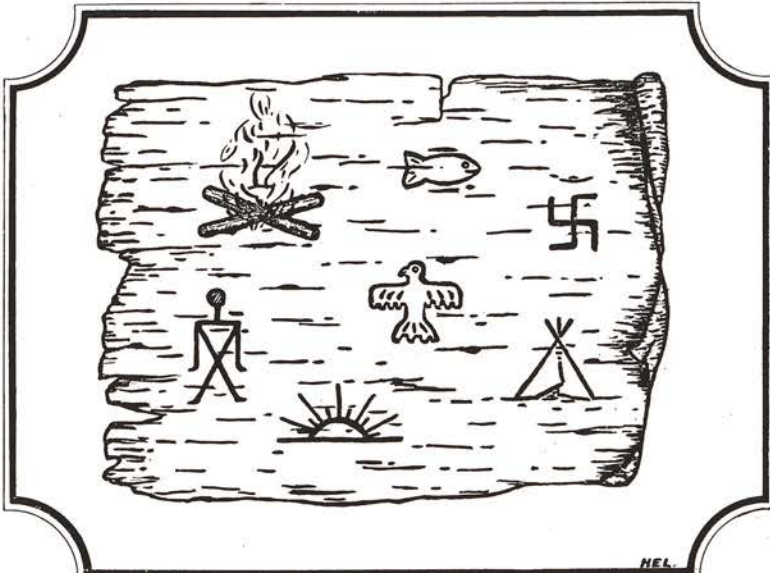
KILBOURN—NECEDAH

Our fifth game was played at Necedah. We were still minus two regulars on account of injuries. The less said about this game, the better. Necedah started in early and scored almost at will. The game was as one-sided as the score indicates—25-0 in Necedah's favor.

KILBOURN—NEW LISBON

The last game of the season was played at New Lisbon. The regulars were all back and everyone was full of fight. The field was muddy and the game was not fast. Kilbourn's driving attack featured the game throughout. The first half ended 0-0, but Kilbourn had outplayed New Lisbon. Kilbourn started out strong in the third quarter and soon scored, but failed to kick goal. The last quarter was played in New Lisbon's territory, but Kilbourn lacked the punch to score and was held to one touchdown. The team showed nice teamwork and played well. This victory in the final game of the season left a good feeling among the members of the team and gave them incentive to make bigger plans for another year.





LITERARY





The Ambassador From Mars

I rushed pellmell up the stairs without heeding the traffic rules, and was just turning the corner when cr-r-ash! bang! I bumped into a hard body and received something in the nature of an electric shock. While recovering my equilibrium I took care to notice his features. He had No. 18 copper wire hair which extended in all directions after the manner of a porcupine. His eyes were 2.5 Mazda flashlight bulbs and when he opened his mouth to apologize I saw two rows of little porcelain insulators, probably there for the purpose of offsetting the current of his tongue. His fingers and his toes, too, for he was barefooted, were comprised of separate electro-magnets, the wires from these composing the cables which were his arms and legs, and running up to the storage battery in his head.

"Sorry," he told me, in electrical accents.

"Oh, that's all right," I assured him, fascinated by the flickering glow of his electric eyes. He started off down the stairs and then turned abruptly as if charged by a thought.

"Say, you human," he said, "perhaps you would be so kind as to—"Here he stopped for a second while he tried to overcome the static in his voice—"as to be my guide through the building," he went on. "I am the ambassador from Mars and have been sent by the Head Battery to see how they run schools on the earth. Will you be my guide?"

"Sure," I said obligingly, and then I noticed for the first time the iron note book clutched in one magnetic hand. In this he made wireless observations with an electric pencil.

"This," I told him, pointing to a closed door, "is the office."

"Office," said he; "what's an office?"

"An office," said I, "is where the principal sits and gives directions in all directions."

"Oh, I see," said my new friend. "It's something like a great big storage plant sending current to many cities."

"Yes, you have the idea," I answered.

Just at this point a short circuit appeared in the cable and the pencil sputtered until the writing became illegible. So we stopped while he loosened a wire here and tightened one there.

As we went along his magnetic fingers and toes picked up small articlees such as pens, pocket-knives, etc. These he got rid of by pulling on his collar button. I suppose that broke the circuit. Soon we came to the playground where the boys were playing football.

"What are they doing," asked the embassodar, and his electrical accent was very marked now.

"They are playing football," said I.

"Oh, that's it," he said in a relieved tone. "I was afraid they were fighting. But I should think the ball would stick to their feet and even if it didn't I should think it would sail off into space and never come back."

"We haven't magnets in our feet," I told him; "and the ball always comes back. The boys have it trained."

This explanation appeared to satisfy him for he asked no more questions until we passed the music room where the orchestra was in full swing.

"Why all the racket?" inquired my electrical friend.

"Racket," said I. "Don't insult our orchestra by calling it racket. That's music."

"What's music?"

"Music is a succession of harmonious sounds."

"Blah," said he; "you ought to hear me play Schubert's Serenade on a telegraph instrument. Well, so long! I'm going."

"Going where?" I asked him.

"Back to Mars. The people there admit they are crazy."

So saying, the ambassador jumped into the air and disappeared.

Ruffina Neumeister '28





That Awful Subject

FRESHMEN

Oh, Algebra is a trial,
It's so concise and hard.
When the first semester rolls around,
The red shows on our card.

With x and y and sometimes z
And minus signs combined;
Our poor young minds are almost crazed,
Our work is far behind.

We work, we worry, we toil, we fret,
We study late at night,
And bend our every effort
To win the awful fight.

But after the first semester
It seems itself to do;
Like a funny Chinese puzzle
To which we have a clue.

SOPHOMORES

Oh! do we hate Biology!
The meanest thing in school.
All 'bout the little beasties,
And froggies in the pool.

We find there's many uses
Of hemlock and the pine,
But the main use of the cherry—
Is to make it into wine.

We learn of hypocotyls,
And plumules of the bean,
Such things before we've never heard,
Or have we ever seen.

O, woe be to the villain
Who invented all this bunk;
I really think it's awful
To make us learn this junk.





JUNIORS

Geometry is very hard,
It's stunting all us kids;
It gives us walking nitemares,
And makes us tell big fibs.

When ma says, "How is school, dear?"
Why I say, "Oh, just fine!
Geometry is easy
I always get ninety-nine."

"Well, now, that's great, my child!
I knew that you could do it;
I'm awful glad you didn't quit,
Just stick till you get through it."

Now, how'll we get to heaven
When we tell such awful fibs?
I wish that I were two years old—
A young and carefree kid.

SENIORS

From morning till the dead of night—
From earliest dawn till dark—
Constant study dims the sight—
But that won't stop the Physics Shark.
Oh, teacher, please, remind us yet—
Lest we forget—lest we forget!

The teachers and the students go,
Tomorrow comes the final test.
Still stands that ancient Physics Shark,
Studying later than the rest.
Teacher of physics, remind us yet,
Lest we forget—lest we forget!

Far-called our classmates melt away—
And give no thought to the exam—
They run, they jump, they skate, they play,
While wiser ones begin to cram.
The teacher he will fail us yet,
If we forget—if we forget!

If, drunk with sight of A's, we loose
Will tongues that have not him in awe,
Our teacher will us kids abuse
By requiring proof for Boyle's Law.
Judge of our standings, spare us yet,
If we forget—if we forget!





JUST A COUPLE OF KIDS



LET ME GO!



WHO GETS IT?



WHY SO SOBER?



PALS



THREE FRESHIES



ME TOO!



WHAT'S THE JOKE?



OH, SO STUDIOUS!



HELEN



OUR DANCER I SEE



JUST WATCH ME!





THE SONG OF THE SKELETON

Tune: Among My Souvenirs

There's nothing left of me,
But skin and bones, you see,
I live in misery
Among my souvenirs.

My skin is dried and blue,
My bones are bleached out, too,
I hunt for peace from you,
Among my souvenirs.

My spirit never rests,
My soul was never blessed,
And tho' I do my best,
I find no consolation.

I shake my poor old bones,
I make a few more moans,
I lie down with a groan,
Among my souvenirs.

Ruffina Neumeister, '28

STUDY HOUR

Dramatis Personae:—

A busy Senior preparing her English for the next period.
Several other studnets.
A teacher.

TIME:—'Most any time now.

PLACE:—The Library.

SCENE I

Enter the Senior, chewing gum and flourishing a large, red book.

"Hello, Millie, What chu doin'? English? So'm I. It's awfully hard, isn't it? I wonder what makes her give us such long lessons. I won't have it ready in time. I'm no human dynamo. Well, I suppose I might as well start, anyway.

"'Go bid thy mistress, when my drink is ready, she strike upon the bell. Get thee to—'

"Say, you, William, shut that window. What do you think this is, a cold storage room? Say, Beulah, wouldn't it be fun to set Miss Thorngate's alarm clock so it would go off in class? You'd be afraid to? Why? She'd never know who did it. Dear me, it's 10:15 already. 'Is this a dagger which I see before me?'

"Believe me, that Macbeth was a fool! If he was so scared of being discovered, why didn't he jab the knife into his own heart and end his misery? Then we wouldn't have this lesson to study, anyway. I guess Mr. Shakespeare didn't think of that.

"Am I wound up, did you say? Why no, this is English IV. It's none of your business, anyway. Can't you close the door? Oh, it's you, Miss Gates! Please pardon me. I thought it was one of those pesky freshmen that are always running in and out

"Come, let me clutch thee.
I have thee not and yet I see thee still.
Art thou not, fatal vision, sensible
To feeling as to sight? Or art thou—'

"Shucks, there's the last bell and my English isn't half done."





Alumni

With the generous assistance of the alumni we are able to publish this directory of the graduates of the Kilbourn High School. It contains not only the names of the members of the different classes, but also the occupation and address of each graduate as completely as it was possible to obtain the same.

It is hoped that the present list will be interesting and will prove helpful to those who desire information concerning the graduates of the high school.

1887

Name	Address	Occupation
Jean H. Cady	Green Bay, Wisconsin	
Ida M. Barke	Chicago, Illinois	Physician
Marie (Gujer) Nahawski	Kilbourn, Wisconsin	Home
Cora Gillespie	Seattle, Washington	Bacteriologist
May (Davenport) Reeve	Baraboo, Wisconsin	
*Margaret E. Conway		

1888

Frank Timlin	Wausau, Wisconsin	Lumber Merchant
*Grace (Schofield) Wheaton		
Myrtice (Markham) Johnson-Fitts	Kilbourn, Wisconsin	
Charles Walker	Lamberton, Minnesota	Physician
*Manning Van Alstine		
Rosa (Bauer) Sharpe	Kilbourn, Wisconsin	Home
Irene (Stowell) Woods	St. Paul, Minnesota	Home
Harriet (Snider) Van Alstine	Portland, Oregon	Home
*Agnes (Coleman) Hamilton		
Lola (Hinman) Taft	Seattle, Washington	Home
Ida (Kaufman) Pendleton	Lamost, Alberta, Canada	Home
Lillie (Sorrenson) Woods	Parkside, Hanover, N. H.	Home

1889

Mary (Thorn) Randall	Reedsburg, Wisconsin	Home
Marguerite (Schofield) Hall	Kilbourn, Wisconsin	Home
Nellie (Bennett) Crandall	Kilbourn, Wisconsin	Home
*Jennie (Brown) Brown		
Thomas Gillespie	Peoria, Illinois	Physician

1890

Emma (Campbell) (Ahrens) Ball	Milwaukee, Wisconsin	
Harriet (Campbell) Straw	Washington, D. C.	
Lillian Van Alstine	Wauwatosa, Wisconsin	Librarian & stenographer
Bertha (Ribenaek) Teare	Menomonie, Wisconsin	Home
Anna Soeldner	Kilbourn, Wisconsin	Home
Nellie (Gujer) Laabs	Lyndon, Wisconsin	Home
Flora (Loomis) Williams	Chicago, Illinois	Home
*Ida Hill		
Vinnette Wright	Kilbourn, Wisconsin	Home
*Eva Timlin		
Willis G. Hatch	Prairie City, Illinois	Physician





Name	Address	Occupation
Edward Bayerlein	Milwaukee, Wisconsin	Bookkeeper
Jennie Dixon	Kilbourn, Wisconsin	Home

1891

*Mary (Carpenter) Owens	San Francisco, California	
Claire (Weber) Kerrin	Madison, Wisconsin	Home
Emma (Andrews) Julson	Kilbourn, Wisconsin	Home
Evelyn (Coon) Parsons	Kilbourn, Wisconsin	Grocer
Carl Soeldner		
*Anna (Baggot) Griffin		
*Benjamin F. Kaufman	Wheatland, North Dakota	
Addie (Stearns) Hunter	Roanoke, Virginia	Home
Lydia (Brown) Crothers		
*Frank C. Straw		
Mamie (Snider) McBride	Fort Madison, Iowa	

1892

Jennie (Corning) Toates	La Grange, Illinois	Home
Frank Gujer	St. Paul, Minnesota	Railroad
Edna (Rork) O'Neil	Kilbourn, Wisconsin	Home
Maggie Deneen	Lyndon, Wisconsin	
*Emma Hanson		
Ida (Hanson) (Johnson) Paulson	Montana	
*Tillie (Ahrens) Rowlands		
Yetta (Weidenbacker) Lank	Eau Claire, Wisconsin	
Martha Laabs	Oshkosh, Wisconsin	
Victoria (McVey) Buskuhl	Friend, Oregon	
Lillie (Schroeder) Naber	Milwaukee, Wisconsin	Clerk
*Carl Bayerlain		
*Ira Bullis		

1893

Emma (Borcher) Watson	Portage, Wisconsin	Home
Josie H. Murray	Kilbourn, Wisconsin	
Zada Hall	Kilbourn, Wisconsin	Home
Julia (Trumbell) Huesby	Sentinel Butte, N. D.	
Harry Van Alstine	Kilbourn, Wisconsin	Hotel Van
Cora (Bishop) Latham	Kilbourn, Wisconsin	Home
Edith Flook	Montello, Wisconsin	
Daniel T. O'Neil	Kilbourn, Wisconsin	Druggist
Sydney Davies	Chicago, Illinois	Druggist

1894

Cecelia Murphy	New York City, N. Y.	Home
Winnifred Berry	Chicago, Illinois	Teacher
Mary (Seaman) Patterson	Chicago, Illinois	Home
*Fanny (Slowey) Longstreet		
Anna (Dixon) Fry	Marengo, Illinois	Home
Mary (Leute) Waldron	Milwaukee, Wisconsin	Home
Mary (Dougherty) Wright	Superior, Wisconsin	Home
*Alberta (Gillespie) Mertens		
Josephine (Wooster) Stanton	Masopia, South Dakota	
*Ida (Weber) Steere		





Name	Address	Occupation
Hallie (Schofield) (Hart) Steere	Sacramento, California	
Ellen Patterson	Rochester, New York	Bookkeeper
Ella R. (Smith) Philipp	Milwaukee, Wisconsin	
George Blood	Grann Forks, N. Dakota	Laundry
Laura (Peterson) Rowe	Velva, North Dakota	
Bertha (Hammond) Day	The Dalles, Oregon	
*Mamie (Hoisington) Stearns		

1895

Dimple Van Alstine	Milwaukee, Wisconsin	Stenographer
Lillian (Bauer) Hollinshead	St. Paul, Minnesota	Home
Alma (Crothers) Berry	Kilbourn, Wisconsin	Home
Gertrude (Chamberlain) Parkinson	Madison, Wisconsin	Home
Effa (Bullis) Arntz	Kilbourn, Wisconsin	Home
Anna (Bayerlein) Luettgerodt	Kilbourn, Wisconsin	Home

1896

Harry Tennison	New Orleans, Louisiana	Salesman
Chester Woodruff	Los Angeles, California	
Orlin L. Stenson	Clergyman, Wisconsin	
Fred Vincent	Kilbourn, Wisconsin	
Glen Parsons	Kilbourn, Wisconsin	Captain of Winnebago
Frank Barrows	Moscow, Idaho	Physician
Lynn Pierce	Sheridan, Wyoming	Piano Tuner
Noyce B. Smith	Kilbourn, Wisconsin	Dentist
Glen Treadwell	Friendship, Wisconsin	Physician
Harry Snider	Kilbourn, Wisconsin	Lumber Dealer
Grace (Smith) Creutz	Beaver Dam, Wisconsin	Home
*Alma (Sweet) Vogt		
Mabel Bennett	Kalama, Washington	Teacher
May (Joslin) Calvert	Madison, Wisconsin	
Hattie (Brown) Evans	Madison, Wisconsin	Home
Lottie Rice	Portland, Oregon	
Tessie Murray	Chicago, Illinois	
Margaret Older	Milwaukee, Wisconsin	Teacher
*Etta (Bullis) Older		
Louise (Wagner) Pore	Monessen, Pennsylvania	Home

1897

*Joseph Urnetle		
Stanley Joslin	Bellville, Wisconsin	M. E. Clergyman
John Hollinshead	St. Paul, Minnesota	R. R. Mail Clerk
Clara (Vogt) (Gnauchs) Haupt	Arlington, Wisconsin	
Jessie (McNeil) Pierce	Spokane, Washington	Home
Julia (Bayerlein) Forley	Pomona, California	
Anna Vogt	Kilbourn, Wisconsin	Teacher
Cecelia (McManman) Smith		
Alice (Sweet) Finnegan	Kilbourn, Wisconsin	Home
Mayme (Purcell) Fancy	Chicago, Illinois	Home

1898

Harry Patterson	Fillmore, New York	
Rosetta (Zimmerman) Dexter	Madison, Wisconsin	
*Frank Radandt		





Name	Address	Occupation
Clarence Magoon	Gladstone, Michigan	Train Dispatcher
Michael Cavanaugh	Milwaukee, Wisconsin	Railroad
Jennie (Cooper) Morris	Evanston, Illinois	Home
William Purcell	El Centro, California	Real Estate
Ed Gillespie	Wemoa, Illinois	Physician
Sarah (McVey) Cooper	The Dalles, Oregon	Home
Edna Crothers	Kilbourn, Wisconsin	Home

1899

*Louis Clapper		
Lena Leute	Madison, Wisconsin	Stenographer
May (Cusack) Markham	Kilbourn, Wisconsin	Home
Georgia (Porte) Campbell	Madison, Wisconsin	Home
Helen (Loomis) Laack	Los Angeles, California	Home
Robert Schofield	Los Angeles, California	
*Stewart Corning		
Glenn Snider	Aberdeen, Washington	Attorney
Grace (Armeah) Ames		
Lillian (Kesler) Romer	New York, New York	
*Russell Smith		
John Murray	Mott, North Dakota	Attorney
Ida (Vogt) Sanders	Chicago, Illinois	Home
Anna (McManman) Murphy	New York, New York	
James F. Dougherty	Kilbourn, Wisconsin	Attorney

1900

A. D. Sunderland	Kilbourn, Wisconsin	Hotel
Floyd Marston	Kilbourn, Wisconsin	News Stand
Fred Soeldner	Kilbourn, Wisconsin	Real Estate
William Murray	Kilbourn, Wisconsin	
*Warren Stowell		
*Edwin Lewis		
*Katie Wilderick		
Anna (Donahue) Mortell	Oshkosh, Wisconsin	
Mary (Donahue) Smalt	Oshkosh, Wisconsin	Home
May (Langworthy) Buckley	Woodstock, Illinois	
Katie Dougherty	Minneapolis, Minnesota	Nurse
Agnes (Dougherty) O'Brien	Mauston, Wisconsin	Home
Emma Doepke	Pasadena, California	
Anna (Doepke) Mayers	Pasadena, California	
Alice (Bennett) Tetzlaff	Portland, Oregon	Home
Katie (Hayes) Taylor	Lyndon, Wisconsin	
Sadie (Phillips) Knight	Minneapolis, Minnesota	

1901

Nina (Loomis) Crothers	Madison, Wisconsin	Home
Carl Waterman	Appleton, Wisconsin	Dean of Music, Lawrence College
Philip Naber	Milwaukee, Wisconsin	
Norman Magoon	Kilbourn, Wisconsin	Shoe Store
Wakelin McNeil	Madison, Wisconsin	
Addie (Fedderly) Griesenauer	Livingston, Montana	
Mamie (Hile) Murphy	Kilbourn, Wisconsin	Home
Millie (Gujer) Brady	Kilbourn, Wisconsin	Home
Lida (Hoisington) Weaver	Mauston, Wisconsin	





Name	Address	Occupation
Della (Thompson) White	Kilbourn, Wisconsin	Home
Florence (Smock) Van Alstine	Kilbourn, Wisconsin	Home
Celia Naber	Milwaukee, Wisconsin	
Alta Pepper		
Mae Metcalf		
Elizabeth Murphy	El Paso, Texas	

1902

*Don French		
Edward Gujer	Manly, Iowa	Railway Service
Lydia (McNeal) Tripp	Seattle, Washington	Home
Sybil (Philips) Fedderly	Kilbourn, Wisconsin	Home
Ray Snider	Aberdeen, Washington	Attorney
*John Purcell		
Marion (Flook) Stafford	Oxford, Wisconsin	Home
Helen Richards	Poynette, Wisconsin	Writer

1903

Walter Kleimenhagen	Milwaukee, Wisconsin	Office Harley-Davidson Motor Company
Ray Walker	Plainville, Wisconsin	Farmer
Albion Bennett	Green Valley, Wisconsin	Electrician
John Miller	Mauston, Wisconsin	Attorney
Ida (Zimmerman) Ruels	Madison, Wisconsin	Home
*Hilda (Hansen) Lauderdale		
Minnie Doepke	Pasadena, California	Home
May (Shafer) Jackson	Fort Dodge, Iowa	Home

1904

Laura (Fox) Nelson	Somers, Wisconsin	Home
Laura (Bauer) Welsh	Seattle, Washington	Home
Laura (Zimmerman) Zimmerman	Burlington, Illinois	
Lydia (Zimmerman) Rose	New York, New York	Private Secretary
Ethel (Harris) Mott	Neenah, Wisconsin	Home
Kate (Oehlers) Miller	Milwaukee, Wisconsin	Home
Ida (Belter) Howett	Superior, Wisconsin	Home
Alma (Rothe) Garthwaite	Flint, Michigan	Home
Lora (Oswald) Snider	Kilbourn, Wisconsin	Home
Hettie (Maybee) Wright	Portage, Wisconsin	Home
Emma (Radland) Petterson	Oak Park, Illinois	Home
Arba French	Kilbourn, Wisconsin	
Benjamin Waterman	Effingham, Illinois	Druggist
Fred Wirtz	Oklahoma	Bridge Constructor
Ray Fedderly	Milwaukee, Wisconsin	Grain Business
Leone (Whitely) Britten	Chicago, Illinois	Home

1905

Daisy (Hatch) Cameron	Columbus, Wisconsin	Home
Valera Larson	Chicago, Illinois	Bookkeeper
Helen (Loomis) James	Swarthmore, Penn.	Home
Kittie (Klinger) (Dana) Welter	Kenosha, Wisconsin	Home
Dena (Ihde) Devereaux	Reedsburg, Wisconsin	Home
Tena Nelson	Kilbourn, Wisconsin	Teacher
Walter Foote	Port Edwards, Wisconsin	
Emma Ahlhorn	Valley City, North D.	Teacher



Name	Address	Occupation
Rollin Adams	Chicago, Illinois	
Lester Elliot	Portage, Wisconsin	Ticket Agent
Bert Tollaksen	Kilbourn, Wisconsin	

1906

Vera A. Jones	Atlanta, Georgia	Bell Telephone Co.
Hallie (Gillespie) Tierney	Cedarville, California	Home
Anna Hoedl	Minneapolis, Minnesota	Telephone Operator
*Martha Doepke		
Lottie (Thompson) Schnell	San Diego, California	Home
Nellie (Bauer) Elliot	Portage, Wisconsin	Home
Florence (Fedderly) Elder	Culver City, California	
Leon Vogt	Spokane, Washington	Insurance
Frank Kesler	Minneapolis, Minnesota	Chauffeur
George Fehl	Wauwatosa, Wisconsin	Grocer
George Flook	Eau Claire, Wisconsin	
John Sullivan	Baraboo, Wisconsin	Stock Buyer
Earle House	Mirror Lake, Wisconsin	
Alma (Pribbenow) Richardson	Staples, Minnesota	

1907

Charles Avery	Antigo, Wisconsin	Attorney
Earle Rothe	Chicago, Illinois	Bank Comptroller
Carl Rothe	Milwaukee, Wisconsin	Supervisor of Vocational School
Oliver Helland	Kilbourn, Wisconsin	Hotel Proprietor
Roy Neff	Bismak, North Dakota	Manual Training Teacher
Lillian (Frost) Ducharme	Minneapolis, Minn.	
Mildred (Murray) Bullis	Kilbourn, Wisconsin	
May (McNeil) Hrobsky	Lyons, Wisconsin	Home
Laura (Clough) Crothers	Kilbourn, Wisconsin	Home
Lottie (Knapp) Stevens	Rosholt, Wisconsin	Home
Milton Cusack	Portland, Oregon	

1908

Arthur Kleimenhagen	Kilbourn, Wisconsin	Merchant
Armein Vogt	Westfield, New Jersey	Accountant with General Electric
Corrine (Corning) Green	Madison, Wisconsin	Home
Horace Morse	Kilbourn, Wisconsin	Farmer
Mildren (Corning) McManman	Kilbourn, Wisconsin	Home
Edna Harris	Neenah, Wisconsin	Teacher
Anna Ahlhorn	San Francisco, California	
Olga Radlund	Kilbourn, Wisconsin	Home
Lillie (Bennett) Brower	Spokane, Washington	

1909

Marie (Conrad) Erickson	Brainerd, Minnesota	Home
Lillian (Coapman) Williams	Swarthmore, Penn.	
Werner Myers	Salt Lake City, Utah	U. S. Agriculture Bureau
Alice (McNeil) Small	Spokane, Washington	Home
Edna (Doepke) Sutherland	Pasadena, California	Home
Irene (Stanton) Helland	Kilbourn, Wisconsin	Home
Corrinne (Holwick) Sinneman	Leslie, Michigan	



Name	Address	Occupation
Irene Kaufmann	Kilbourn, Wisconsin	Stenographer
Margaret (Trumble) Marshall	Kilbourn, Wisconsin	Home
Celia (Wilderick) Calkins	Wyocena, Wisconsin	Home
Ollie (Foster) Oliver	Ladysmith, Wisconsin	Home
Albert Oehlers	Mauston, Wisconsin	Jeweler
Keith Smith	Portage, Wisconsin	Telegraph Operator
1910		
Bessie (Armstrong) Williams	Portage, Wisconsin	Home
Mariam Bennett	Kilbourn, Wisconsin	Home
Henry Field	Kilbourn, Wisconsin	Lumberman
Jess Edmonds	Kilbourn, Wisconsin	Hotel Proprietor
Katie (Howley) Sullivan	Kilbourn, Wisconsin	Home
Clifford La Mar	Baraboo, Wisconsin	Lawyer
Rena (Landt) Palmer	Mauston, Wisconsin	Home
Bertha (McElwain) Peterson	Sparta, Wisconsin	Home
Nettie Nelson	Milwaukee, Wisconsin	Nurse
Lester Rothe	Madison, Wisconsin	Bond and Investment Co.
Louise (Slocum) Denzine	Portage, Wisconsin	Home
Mary (Storandt) Jensen	Kilbourn, Wisconsin	
1911		
Belle (Bement) Edmonds	Kilbourn, Wisconsin	Home
Maude (Coapman) Hartman	Hazelton, Wisconsin	
Neil Gleason	Milwaukee, Wisconsin	Cashier
Minnie (Naber) Emmerich	Kilbourn, Wisconsin	
Glenn Schroeder	Kilbourn, Wisconsin	Electrician
William Sullivan	Milwaukee, Wisconsin	Attorney
1912		
Robert Jacobson	Madison, Wisconsin	Revenue Officer
Myrtle (Armstrong) Tennison	Arlington, Wisconsin	
Leota (Bradburn) Pugh	Portage, Wisconsin	Home
Dana Billings	Portage, Wisconsin	Sup't of Power Plant
Sybil Fogle	Hammond, Indiana	Teacher
Tillie (Hoedel) Gray	Kilbourn, Wisconsin	Home
Ruth Marlowe	Stevens Point, Wisconsin	Nurse
Dorothy Shute	Washington, D. C.	Private Secretary Claims Department U. S. Treasury
Ruth (Stanton) Kerrigan	Kilbourn, Wisconsin	
Margaret (Van Dyke) Carpenter	Milwaukee, Wisconsin	
Frank Vogt	Mexico, Missouri	Salesman
Ella Zwicky	Milwaukee, Wisconsin	
1913		
Ruth (Bennett) Dyer	Kilbourn, Wisconsin	Home
Margaret (Cavanaugh) Paulson	Kilbourn, Wisconsin	Home
Elida Halverson	Kilbourn, Wisconsin	Home
Lois (Crandall) Musson	Kilbourn, Wisconsin	
Phylis (Crandall) Connor	Kilbourn, Wisconsin	
Anna Kelly	Racine, Wisconsin	Teacher
Karl Kleimenhagen	La Salle, Illinois	Chemical Engineer
Bryce Landt	Kilbourn, Wisconsin	Farmer
Anna (Lynch) Laut	Appleton, Wisconsin	Home
*Clarence Van Alstine		





Name	Address	Occupation
Merle Waldron	Milwaukee, Wisconsin	Accountant

1914

Lawrence Welbaum	Plainville, Wisconsin	Store
Esther (Zimmerman) Burke	Madison, Wisconsin	
Anna (Baggot) Terry	Kilbourn, Wisconsin	Home
Marie Bresnahan	Kilbourn, Wisconsin	Clerk
Floyd Field	Kilbourn, Wisconsin	Dentist
Catherine (Gleason) Krieger	Kilbourn, Wisconsin	Home
Minnie (Hanson) Miller	Fergus Falls, Minnesota	
Grace (Jordan) Garden	Kilbourn, Wisconsin	Home
Harry Radlund	Kilbourn, Wisconsin	Hotel Proprietor
Irma (Schanke) Anderson	Milwaukee, Wisconsin	Home
Amber (Willard) Lindbergh	Chicago, Illinois	Teacher
Lavern Jordan	Cleveland, Ohio	Electrician
Clifford McClyman	Kilbourn, Wisconsin	Merchant
Myrtle Nelson	Kilbourn, Wisconsin	Home
Asa Waldron	Milwaukee, Wisconsin	Accountant

1915

Florence (Freer) Norsell	Portland, Oregon	Home
Olga (Schanke) David	Chicago, Illinois	Home
Thelma Older	Milwaukee, Wisconsin	
Kathryn I. (Purcell) Greenwood	Kilbourn, Wisconsin	Home
Mildred Stowers		
Vida (Coapman) Miller	Racine, Wisconsin	Home
Stella (Marlowe) Coyle	Milwaukee, Wisconsin	Home
Kathryn Lynch	St. Paul, Minnesota	Teacher
Beulah Lloyd	Milwaukee, Wisconsin	Stenographer
Doris Berning	Detroit, Michigan	Librarian
Hazel (Stomner) Fotheringham	Cleveland, Ohio	
*Timmie O'Neil		
Oscar Anderson	Kilbourn, Wisconsin	Mail Carrier
Marion (Slocum) Farnum	Portage, Wisconsin	Home
Edith Ahlhorn	Kilbourn, Wisconsin	Bookkeeper
Gerald Baggot	Kilbourn, Wisconsin	Filling Station
Philip Van Dyke	Kilbourn, Wisconsin	Postmaster
Warren Fish	Kilbourn, Wisconsin	Farmer

1916

Pearl M. (Bauer) Terbilcox	Baraboo, Wisconsin	
Carl J. Cortright	Mason City, Iowa	
Harold J. Donahue	El Paso, Texas	Electrician
Florence (Fish) Ryczek	Delton, Wisconsin	
*Bernard J. Hawes		
Helen H. (Helley) Dahl	Chicago, Illinois	
Kenneth E. Foster	Kilbourn, Wisconsin	Post Office
Joan Kleimenhagen	La Crosse, Wisconsin	Teacher
Geraldine (Landt) Rodwell	San Diego, California	
Harry McClyman	Kilbourn, Wisconsin	Hardware Store
Vivian (McKenzie) Koberstein	Kilbourn, Wisconsin	Home
William Rudolph	Chicago, Illinois	
Bessie (Schoff) Meyers	Adams, Wisconsin	Home
La Verne Thompson	Chicago, Illinois	
Dewey Tolleth	Libertyville, Illinois	





Name	Address	Occupation
Vivian Willard	Genoa, Illinois	Teacher

1917

Esther (Coapman) Lamburgh	Hazelton, Pennsylvania	
Harriet (DeLong) Leff	Los Angeles, California	
Dan A. Greenwood	Kilbourn, Wisconsin	
Beatrice (Ihde) Sarrington	Delton, Wisconsin	Home
John H. Kelly	Kilbourn, Wisconsin	Bank Cashier
John Marlowe	Milwaukee, Wisconsin	
Mary O'Neil	Milwaukee, Wisconsin	Teacher
Marion (Stevenson) Larson	Kilbourn, Wisconsin	
Mildred Stowell	Kilbourn, Wisconsin	
Charlotte (Straw) Hittman	Baltimore, Ohio	
Carrie (Walker) Rose	Waukesha, Wisconsin	

1918

Amelia Storandt	Kilbourn, Wisconsin	
Gertrude (Van Alstine) Arntson	Kilbourn, Wisconsin	
Lucille Stowell	Portage, Wisconsin	
Georgia Ahlhorn	Kilbourn, Wisconsin	
Emma (Nelson) Zinke	Kilbourn, Wisconsin	Home
Francis Gorey	Chicago, Illinois	
Mathias Baggot	Beaver Dam, Wisconsin	Salesman
Orville Oakes	Wisconsin Rapids, Wis.	Dentist
Jesse Scott	Neillsville, Wisconsin	Bookkeeper
Fay Donahue	Chicago, Illinois	Accountant
Vern Howard	Milwaukee, Wisconsin	
*Vera Waterman		
Josephine (Straw) Young	Washington, D. C.	
Lucille (Waldron) Meanny	Chicago, Illinois	
Edna (Stomner) Robbin	Bemidji, Minnesota	Home
Orville Stowers	Milwaukee, Wisconsin	
Marie (Kingsley) Landt	Kilbourn, Wisconsin	Home
Perceval Chaffee	Delton, Wisconsin	
Paul Nettland	Kilbourn, Wisconsin	Home
Homer Tangney	Milwaukee, Wisconsin	
Frank Buese	Beloit, Wisconsin	
Fern (Cone) Hall	Iron Mountain, Michigan	Home
Dewey Dahl	Los Angeles, California	

1919

Roland Berry	Kilbourn, Wisconsin	Home
Helen Blazer	Chicago, Illinois	Stenographer
Francis (Brooks) Boyer	Kilbourn, Wisconsin	Home
Catherine (Crane) Klein	Quincy, Wisconsin	Home
Dorothy (Crane) Kosabud	Adams, Wisconsin	Home
Rexford Crothers	Kilbourn, Wisconsin	
Ardath (Howard) Byers	Nekoosa, Wisconsin	Home
Francis Kelly	Chicago, Illinois	
Vanetta (Leisman) Christopherson	Kilbourn, Wisconsin	Home
Eva Mess	Kilbourn, Wisconsin	
Thelma (Montgomery) Ratton	San Antonio, Texas	
Harold Nehls	Madison, Wisconsin	
Blanche (Niblo) Hindes	White Creek, Wisconsin	Home
Mildred (Orton) Cochraine	Portage, Wisconsin	Home





Name	Address	Occupation
Alvin Sutherland	Minneapolis, Minnesota	Clerk
Harvy Tangney	Flagstaff, Arizona	
Lenora Ukert	Milwaukee, Wisconsin	
Inez (Waterman) Thompson	Kilbourn, Wisconsin	Home
Henry Wenkman	Kilbourn, Wisconsin	Home

1920

Carol Berry	Madison, Wisconsin	
Norman Coapman	Pottstown, Pennsylvania	Salesman
Ervin Cone	Kilbourn, Wisconsin	Mail Carrier
Bessie (Cornwall) Kingsley	Kilbourn, Wisconsin	Home
Helen Donahue	El Paso, Texas	Teacher
Clara (Foss) Brockman	Dellona, Wisconsin	
John Lynch	Kilbourn, Wisconsin	
Florence Mess	Kilbourn, Wisconsin	
Margaret Murphy	Milwaukee, Wisconsin	Social Worker
Vanetta O'Brien	Kilbourn, Wisconsin	Home
Leona Orton	Milwaukee, Wisconsin	
Henry Seger	Kilbourn, Wisconsin	Home
Hazel (Squires) Adams	Delton Wisconsin	
Kenneth Walrath	Nekoosa, Wisconsin	Home
Emil Walters	Kilbourn, Wisconsin	Home

1921

Anna (Nelson) Gramme	Milwaukee, Wisconsin	
Lulu (Van Alstine) Stanford	Westfield, Wisconsin	Home
Harry Cone	Kilbourn, Wisconsin	
Claire Tolleth	Chicago, Illinois	
Earl Peterson	Kilbourn, Wisconsin	Home
Glenn Hyatt	Kilbourn, Wisconsin	Home
Andrew Waterman	Kilbourn, Wisconsin	
Redlin Schanke	Kilbourn, Wisconsin	
Ruby (Stomer) De Nee	Cleveland, Ohio	
Kathryn (Hayes) Anderson	Kilbourn, Wisconsin	Home
Stewart Thompson	Kilbourn, Wisconsin	Home
Dan Smith	Wink, Texas	Contractor
Madge Stanton	Kilbourn, Wisconsin	
*Will Gaffney		
Ralph O'Neil	Neillsville, Wisconsin	Teacher

1922

Charles Dunham	Milwaukee, Wisconsin	
Harry Flickner	Milwaukee, Wisconsin	
Helen Baggot	St. Paul, Minnesota	Nurse
Persis Batty	Chicago, Illinois	Chicago Telegraph College
Vida (Baker) Coy	Kilbourn, Wisconsin	Home
Richard Bennett	Portage, Wisconsin	Electrician
Mary Donnelly	Plainville, Wisconsin	Teacher
Olive Dunham	Kilbourn, Wisconsin	Home
Phylis (Foreman) Dunham	Kilbourn, Wisconsin	Home
Alice Francis	Kilbourn, Wisconsin	Stenographer
Frank Laabs	Lyndon, Wisconsin	Clerk
Janet Landt	Kilbourn, Wisconsin	Teacher
Marjorie Landt	Kilbourn, Wisconsin	Librarian
May (Leissman) Stickford	Kilbourn, Wisconsin	





Name	Address	Occupation
Neva (McClyman) Fulsom	Markesan, Wisconsin	Home
Nina McClyman	Omro, Wisconsin	Teacher
Florence (Nelson) Krouger	Milwaukee, Wisconsin	
Geraldine (Tangney) O'Neil	Portland, Oregon	Home
Robert Thomm	Chicago, Illinois	Shipping Clerk
Robert Wainright	Kilbourn, Wisconsin	Mail Carrier
Winnie (Woodring) Franklin	Oxford, Wisconsin	
Marjorie Olp	White Creek, Wisconsin	
Elizabeth Pfister	Madison, Wisconsin	Stenographer
Crystal (Lee) Priester	Kilbourn, Wisconsin	Home
Emma Thompson	Kilbourn, Wisconsin	Home
Luella Buckley	Mountain Lake, Minnesota	Teacher
Edward Lynch	Kilbourn, Wisconsin	Home
Lydia Porte		

1923

Agnes Anderson	Beaver Dam, Wisconsin	Teacher
Margaret (Anderson) Yuds	Milwaukee, Wisconsin	Home
Adeline Arntz	Kilbourn, Wisconsin	Bookkeeper
Lawrence Barney	Milwaukee, Wisconsin	Accountant
Helen Bauer	Horicon, Wisconsin	Teacher
Blanche (Botsford) Wainright	Kilbourn, Wisconsin	Home
Harris Botsford	Kilbourn, Wisconsin	Electrician
Charlotte (Burgess) O'Connor	Kilbourn, Wisconsin	
Robert Berry	Chicago, Illinois	Electrician
Stanley Crothers	Kilbourn, Wisconsin	Home
Edith Dehmow	Chicago, Illinois	Telephone Operator
Ethel Dunham	Reedsburg, Wisconsin	Teacher
Florence Foster	Milwaukee, Wisconsin	Housework
Sylvester Hendrickson	Chicago, Illinois	
Albert Ihde	Delton, Wisconsin	Home
Mildred (Jewell) Tangney	Kilbourn, Wisconsin	
Frances Landt	Kilbourn, Wisconsin	Home
Lillian (Nelson) Anderson	Kilbourn, Wisconsin	Home
Roland Olson	Briggsville, Wisconsin	Home
Claude O'Neil	Kilbourn, Wisconsin	Home
Lorna O'Neil	Mosinee, Wisconsin	Teacher
Esther (Radant) McTavish	Milwaukee, Wisconsin	
Marie Ramer	Milwaukee, Wisconsin	Nurse, St. Mary's Hospital
George Schilstra	Madison, Wisconsin	Student, U. W.
Marie Schoeninger	Milwaukee, Wisconsin	Nurse
Clifford Taft	Milwaukee, Wisconsin	
Margaret (Tolleth) Schumway	Kilbourn, Wisconsin	Telephone Operator
Wilma (Winnes) Kaiser	Kilbourn, Wisconsin	
Martin Hacker	Chicago, Illinois	Officer of Law
George Mathews	Milwaukee, Wisconsin	Contractor
Mary O'Brien	Oak Park, Illinois	Teacher
Hazel Schoff	Friendship, Wisconsin	Teacher
Emil Heineke	Phoenix, Arizona	Draftsman
Alma Stafford		
Bertha Kuester		
George Charlesworth	Kilbourn, Wisconsin	

1924

Marian Avery	Janesville, Wisconsin	Stenographer
Alice Bauer	Madison, Wisconsin	Student U. W.
Margaret Baggot	Kilbourn, Wisconsin	Teacher





Name	Address	Occupation
Herbert Cone	Kilbourn, Wisconsin	Home
Robert Dougherty	Ripon, Wisconsin	Student
Stuart Fedderly	Kilbourn, Wisconsin	Home
Howard Gaffney	Kilbourn, Wisconsin	Clerk
Fred Gottschalk	Waukesha, Wisconsin	Foundry Works
Gertrude Helland	Kilbourn, Wisconsin	Stenographer
Arthur Kane	Kilbourn, Wisconsin	Expressman
Clara Kassner	Milwaukee, Wisconsin	Student
Esther Leege	Milwaukee, Wisconsin	Stenographer
Marie Murphy	Portage, Wisconsin	Nurse
Florence (Mathews) Meunnig	Milwaukee, Wisconsin	
Lucille (Morse) Radue	Milwaukee, Wisconsin	Home
Jesse Thomm	Decatur, Illinois	Foreman Bell Telephone Company
Doris Tofson	Kilbourn, Wisconsin	Beauty Parlor
George Winnes	Kilbourn, Wisconsin	Clerk
Gordon Winnes	Kilbourn, Wisconsin	Clerk
Leona (Zeit) Stapleton	Kilbourn, Wisconsin	
Hazel Sperbeck	Plainville, Wisconsin	Home
Edwin Lee	California	
Archie Tittle	Michigan	
Elsie Cook	Plainville, Wisconsin	Teacher
Eva (Flickner) Hall	Portland, Oregon	Home
Vinnie (Ward) Engnath	Plainville, Wisconsin	
Ruth (Murray) Bresnahan	Kilbourn, Wisconsin	Home
Ruth Foster	Kilbourn, Wisconsin	Teacher

1925

Josephine Arntz	Milwaukee, Wisconsin	Milwaukee Normal
Myrtle Cummings	Kilbourn, Wisconsin	Stenographer
Jessie Dingee	Stevens Point, Wisconsin	
Louise Field	Madison, Wisconsin	Student U. W.
Thelma Fisch	Michigan City, Indiana	Home
Hazel Hansen	Milwaukee, Wisconsin	Nurse, Columbia Hospital
Hilda Hansen	Oshkosh, Wisconsin	Student, Oshkosh Normal
Alice Hendrickson	Chicago, Illinois	Nurse
Walter Heineke	Chicago, Illinois	Business College
Edith Hillman	Reedsburg, Wisconsin	Teacher
Emma (Julson) Carter	Madison, Wisconsin	Home
Dwight Lee		
Henry Lee	Anaheim, California	Construction Work
Lucille (Markham) Emerich	Merrill, Wisconsin	
Susan McDonald	Kilbourn, Wisconsin	Home
Marjorie Montgomery	Madison, Wisconsin	Stenographer
Clifford McDonald	Milwaukee, Wisconsin	
Ray Nelson	White Creek, Wisconsin	Home
Stella O'Connell	Kilbourn, Wisconsin	Teacher
Mae Peterson	Kilbourn, Wisconsin	Music Teacher
Cleo Schoff	Lyndon, Wisconsin	Teacher
Madeline Schoeninger	Kilbourn, Wisconsin	Stenographer
Kenneth Schanke	Kilbourn, Wisconsin	Stenographer
Natlie Swansby	Columbus, Wisconsin	Student
Avis Schultz	Kilbourn, Wisconsin	Home
Esther Thomas	Milwaukee, Wisconsin	Beauty Parlor
Floyd Thompson	Milwaukee, Wisconsin	
Ernest Van Alstine	Waukesha, Wisconsin	Carroll College





Name	Address	Occupation
Charlotte Waterman	Appleton, Wisconsin	Student
Luella (Wharry) Jackson	La Crosse, Wisconsin	Home
Anna Winnes	Madison, Wisconsin	Stenographer

1926

Mary Baggot	Winona, Minnesota	College of St. Theresa
Walter Cone	Kilbourn, Wisconsin	Home
Mildred Dingee	Menomonie, Wisconsin	Stout Institute
Catherine Donnelly	Columbus, Wisconsin	County Normal
Roy Duclos	Kilbourn, Wisconsin	Home
Arlene Elderkin	Plainville, Wisconsin	Home
Mae Gaffney	Stevens Point, Wisconsin	Stevens Point Teachers' College
Edna Gregerson	Kilbourn, Wisconsin	Home
Lorraine Hendrickson	Milwaukee, Wisconsin	Milwaukee Normal
Amber (Hyatt) Plumb	Kilbourn, Wisconsin	Home
Damon Loomis	Madison, Wisconsin	University of Wisconsin
Howard Lorenzen	Kilbourn, Wisconsin	Home
Kenneth Luetzgerodt	Kilbourn, Wisconsin	Home
Myron Lorenzen	Kilbourn, Wisconsin	Home
Irene Morley	Adams, Wisconsin	Teacher
Lena Morse	Milwaukee, Wisconsin	Clerk
Mildred Mulligan	Madison, Wisconsin	Madison College
Helen Murphy	Milwaukee, Wisconsin	Nurse, St. Mary's Hospital
Percy Newell	Kilbourn, Wisconsin	Home
Grace O'Neil	Appleton, Wisconsin	Student, Lawrence College
Ellsworth Plumb	Kilbourn, Wisconsin	Home
Margaret Procknow	Kilbourn, Wisconsin	Bookkeeper
Marguerite Rickon	Delton, Wisconsin	Home
Bruce Smith	Kilbourn, Wisconsin	Home
Robert Smith	Kilbourn, Wisconsin	Home
Helen Storandt	Milwaukee, Wisconsin	Milwaukee State Teachers' College
Edward Stowers	Kilbourn, Wisconsin	Home
Belva Thompson	Kilbourn, Wisconsin	Home
Grace Utter	Lyndon, Wisconsin	Home
Gertrude Vasey	Kilbourn, Wisconsin	Stenographer
James Wimmer	Oshkosh, Wisconsin	Oshkosh Normal
Manis Woodring	Waukesha, Wisconsin	
Marjorie Zeitz	Kilbourn, Wisconsin	Home
Wilbur Zentner	Madison, Wisconsin	Student, U. W.

1927

Dorothy Barker	Milwaukee, Wisconsin	Clerk
Glenn Blatchley	Chicago, Illinois	
Helen Brady	Winona, Minnesota	St. Theresa's College
Hazel (Champlain) Pfister	Kilbourn, Wisconsin	
Stanley Cole	Baraboo, Wisconsin	Home
Gordon Dunham	Kilbourn, Wisconsin	Home
Floyd Heimel	Milwaukee, Wisconsin	Hoffman's Electrical School
Edward Heineke	Oshkosh, Wisconsin	Oshkosh Normal
Eleanor Knudson	Kilbourn, Wisconsin	Home
Hazel Leissman	Milwaukee, Wisconsin	Milwaukee Normal





Name	Address	Occupation
Marian Loomis	Madison, Wisconsin	Student, U. W.
Dan McManman	Madison, Wisconsin	Student, U. W.
Celia Morse	Kilbourn, Wisconsin	Home
Delbert Morse	Milwaukee, Wisconsin	Hoffman's Business College
Veronica O'Brien	Chicago, Illinois	Nurse, St. Anne's Hospital
Robert Olson	Kilbourn, Wisconsin	Home
Lois (Plumb) Balsmider	Kilbourn, Wisconsin	Home
Laura Schoeninger	Stevens Point, Wisconsin	Student
Eleanor Seger	Milwaukee, Wisconsin	Hoffman's Business College
Beverly Snider	Beloit, Wisconsin	Student, Beloit College
Charles Snider	Beloit, Wisconsin	Student, Beloit College
Wilma Stevenson	Milwaukee, Wisconsin	Milwaukee Normal
Marguerite Timme	Appleton, Wisconsin	Student, Lawrence College
Kathryne Timlin	Milwaukee, Wisconsin	Nurse, St. Mary's Hospital
Lorraine Timlin	Kilbourn, Wisconsin	Clerk
Donald Tofson	Oshkosh, Wisconsin	Oshkosh Normal

*Indicates deceased



Kilbourn Public Library





Course of Study in Kilbourn High School

FRESHMEN

Required:

Algebra
English I
General Science

Elective:

Latin I
Music I
Home Economics I
Manual Arts I

SOPHOMORES

Required:

Arithmetic, 1st semester
Civics, 2nd semester
English II
Biology and Physiology

Elective:

Latin I
Music I
Manual Arts II
Home Economics II

JUNIORS

Required:

Geometry
English III
Modern History

Elective:

Latin III
Geography
Home Economics III
Manual Arts III
Music II

SENIORS

Required:

American History
Physics

Elective:

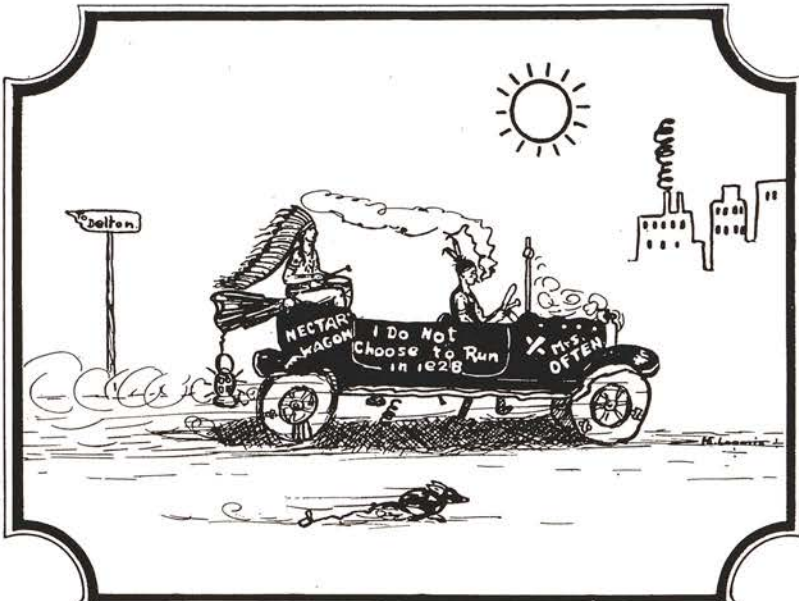
English IV
Economics, 1st semester
Social Problems, 2nd semester
Latin III
Advanced Algebra, 1st semester
Solid Geometry, 2nd semester

A student must complete at least two years of work in Latin, Home Economics and Manual Arts before any credit will be allowed in these subjects.

Latin I and II will be offered in alternate years.

Music II will be offered in 1929-30.





HUMOR





TIME TABLE

- 8:00—Harriet Waterman removes gum from bed-post.
8:15—Bernard Peterson eats 3 boxes of breakfast food and 25 flapjacks.
8:30—Celeste's alarm clock explodes.
8:45—Presiding teacher demands silence.
9:00—Mr. Trentlage makes the announcement that another Parker pen has been lost.
9:01—Seniors rush wildly to physics class.
9:05—Clarice Drollinger arrives.
10:00—Keith Foster gets waste basket and starts collecting his thoughts.
11:30—Eddie Hendrickson passes gum around class.
11:32—Miss Thorngate tells Marcel Naber to remove gum from mouth.
11:33—Marcel removes gum.
11:34—Marcel puts gum back in mouth.
12:00—Students and teachers seek refreshments to furnish energy wherewith to survive the afternoon.
12:25—A good time gathering is already under way.
1:00—More misery begins.
1:45—Geometry students heave a sigh of relief.
1:50—Joe Wenkman awakens to begin the day's work.
3:15—Fun hour for club members starts.
4:00—The students' misery is ended. Mad rush for nearest exits.

KILBOURN HIGH SCHOOL ENCYCLOPEDIA

- Bulletin Board—Reserve for thumb tacks used by students.
Chalk—Small, white article used in self-defense.
Chicago Tribune—Periodical used to furnish cartoons for amusement of idle students.
Compass—A very handy instrument for manicuring the nails. Also used to carve initials.
Drinking Fountain—Receptacle for discarded chewing gum.
Erasers—Used for appeasing the hunger of students as well as an improvisation for paper wads.
Football—Excuse for unprepared lessons.
Laboratory—Warehouse for ether and other sleep producing concoctions.
Physical Exercises—Idea of standing during recitations.
Piano—A beautiful instrument vigorously exercised by several inexperienced pianists for the purpose of enabling students to stumble out of the assembly. Also receptacle for used magazines.
Reference Books—An exchange for notes.
Report Cards—Reason why young men and women leave home.
Shoes—Note carriers.
Study Hall—Social hour room. Also sleeping room during the day.
Teacher-in charge—An unfeeling, mechanical statue with four eyes.







FRIENDS

of our

High School

The Staff of the 1928 Arrow sincerely expresses its most genuine appreciation to the group of business and professional men who have contributed so largely toward making possible this edition of the Kilbourn High School Annual. It is only through the general support of the advertisers that publications of this character can be produced. The Staff wishes all subscribers to The Arrow to read carefully the advertisements contained on the following pages and further urges all readers to patronize the firms who have been so loyal in the support of The Arrow.

Farmers and Merchants State Bank

Kilbourn, Wisconsin

"The Bank of Personal Service"



We Solicit Your Business
Your Account Invited, Protected and Appreciated

Make This Bank Your Business Home

The Dells of Wisconsin River



Spend Your Vacation At
The Dells



GEO. H. CRANDALL

Kilbourn State Bank

Kilbourn, Wisconsin



Established - - 1884

Resources - - \$1,300,000

National Guardian Life Insurance Co.

H. M. TOFSON

Kilbourn, Wisconsin

EXCUSE DEPARTMENT

1. I didn't have time.
2. I had to write a theme.
3. Play practice interfered.
4. I haven't enough study periods.
5. I couldn't find any material on that.
6. The reference books were all in use.
7. Overslept.
8. Clock stopped.
9. Didn't know we were supposed to have that.
10. Someone borrowed my pen and forgot to return it.

John Hanifin explaining geometry theorem: Diagonals of a square disect each other.

Teacher in charge: "Can't you find some work to do?"

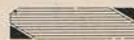
Freshman: "Gee whiz! Am I expected to do work and find it too?"

Miss Gates: "Harriet, what is a vacuum?"

Harriet: "I don't know; I have it in my head but I can't explain it."



Drink Dells Bottled Beverages



Dells Bottling Works

Kilbourn, Wisconsin

This

Issue of "The Arrow"

Printed on the Presses

of the

Kilbourn Events Office

Kilbourn, Wisconsin



Family Shoe Store

Where You Buy Shoes For All The Family

We Sell Phoenix Hosiery



Kleimenhagen & Magoon

Kilbourn, Wisconsin

LOVE'S LABOR LOST

He held her tenderly lest he harm her frail delicacy. Ever so warmly he pressed her in his grasp and listened for the murmuring sounds that he yearned to hear. Nearer to his face he held her until her mouth seemed to tell him in its silence that all was well. She breathed wearily and he felt her heart beating rapturously. Again his grasp closed caressingly about her. In utter desperation Paul threw her back into the water and moaned, "Miss Gates, I can't make this frog croak."

Miss Gates: "Francis, what is an example of wasted energy?"

Francis Leute: "Telling hair-raising stories to a bald headed man."

"Robert," said the teacher to drive home the lesson which was on charity and kindness, "if I saw a man beating a donkey and stopped him from doing so, what virtue would I be showing?"

"Brotherly love," answered Robert, promptly.

Mr. Trentlage: "When was radio operation begun in America?"

Leslie Spence: "When Paul Revere broadcasted on one plug."

Mr. Ruehlman: "What's the matter, Helen?"

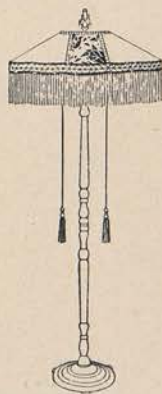
Helen L. Ryan: "You've assigned me to this seat for a week and there's a tack in it."

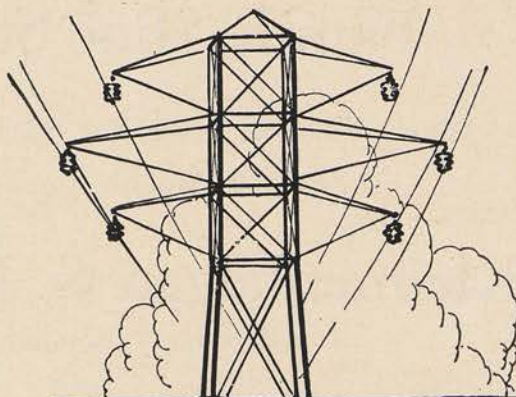
H. J. LANDRY

Furniture and Undertaking

Kilbourn, Wisconsin

Everything For The Permanent Decoration Of The
Home





Every Month
in the Year

S	M	T	W	T	F	S
	1	2	3	4	5	6
7	8	9	10	11	12	13
14	15	16	17	18	19	20
21	22	23	24	25	26	27
28	29	30				

Public Utility Service

Is Always At Work

It is your Power and Light Company's job to furnish dependable service, day after day, month after month, year after year.

It is this convenience, which is great rather than the cost, which is small, that measures the value of the service.

WISCONSIN
POWER AND LIGHT
COMPANY

Beauty and Style Shoppe

Kilbourn. Wisconsin

Graduation Dresses

Coats - Dresses

Art Goods

Millinery

Infants Wear

Lingerie

Hosiery

Corsets

Phone 281W

∴

Expert Beauty Work

∴

310 Broadway

Miss Thorngate: "How would you punctuate this sentence: 'A five dollar bill flew around the corner?'"

Mabel Dingee: "I'd make a dash after it."

Economics teacher: "What metal would Kilbourn suffer least for if we had no transportation?"

Corma: "Brass."

Ronald: "What's the difference, anyway, between vision and sight?"

Paul: "O, yes, remember those two girls we had out the other night? Well, mine was a vision but yours was a sight!"

Miss Bunker: "What caused so much trouble in today's history lesson?"

Gordon S.: "John Foster!"



OEHLER BROS.

Groceries, Fruits and Vegetables
Chase & Sanborn's Teas and Coffees

Phone 63

Kilbourn, Wisconsin

THE PIANO



The Basic Musical Instrument
Is There One In Your Home?

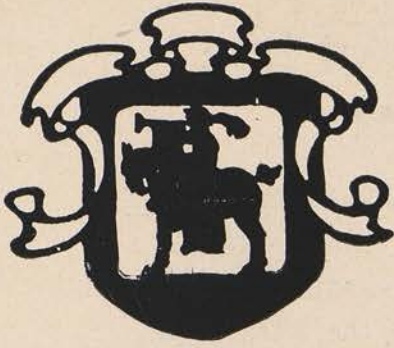
Holzem
MUSIC CO. .. PIANOS ..
MUSICAL INSTRUMENTS
ORTHOPHONIC VICTROLAS

“Music Holzem”



BARABOO
Wisconsin





JENSEN & JONES

Baraboo's Best

CLOTHIERS

Home of

**Hart Schaffner & Marx
Clothes**

Paul: What's the most nervous thing next to a woman?
Ronald: Me.

Francis B.: I'm going over to the old stamping ground.
Bob Morris: Where, the football field?
Francis: No, the postoffice.

John Heitman—(to the girls' cheering section) "Lets go, girls! Show 'em you're blue and white supporters!"

The only difference between graduating and going to school is that after graduation the "darned old place" becomes the "dear old Alma Mater."

Bill: Are you out with the girls much?
Chas. G.: About five dollars a night.

Miss Gates: Now, Helen, will you decline the verb amo, please?
Yes, I'm afraid I'll have to.

Senior: Is there anything worse than being old and bent?
Freshman: Yes; being young and broke.

Keith: I guess you have been out with worse looking fellows than I, haven't you?

Keith: I say, you have been out with worse looking fellows than I, haven't you?
Inez: I heard you the first time. I was just trying to think.
(No answer)

Waiter (Serving Frosh at dinner date): Nectar?
Frosh (Blushing): Not yet.

Where
Quality
is
Assured



Where
Service is
100%
Service

OUR STOCK IS COMPLETE

Ask Us, We May Have It

Groceries - Fruits - Vegetables

JOHN P. SOELDNER GROCERY

Phone 122

Free Delivery

Kilbourn, Wisconsin

Variety is the Spice of Life

A Versatile Entertainment Policy

You will enjoy your visits to this Beautiful Playhouse. Fischer's Portage Theatre Policy embraces every variety of entertainment—wonderful music by Orchestra and Mammoth Pipe Organ, the latest and finest feature pictures and comedy films, spectacular stage presentations, the cream of headliner vaudeville acts and the biggest and brightest road shows.

Fischer's Portage Theatre

Portage, Wisconsin

Performance Policy

Two Complete Shows Each Night

7 O'clock and 9 O'clock

Special Matinees

Saturday and Sunday

at 2:30 p. m.

*Special Vaudeville Presentation Every
Sunday*

Matinee and Night



Attractive
Art Panels
for School
and College
Annuals

Prepared
by the

OSHKOSH
ENGRAVING CO.

Walczyk Studio

Makers of Photographs that Please

Adams, Wis.

Copying and
Enlarging

Kodak Finishing
24 hour Service

Swing Frames
Plaque Frames
Wall Frames

Frames made
to Order



The Photographs of the students and faculty in this annual were taken by the Walczyk Studio Force in the Bennett Studio at Kilbourn.

Automobile Owners

We Solicit Your Patronage

We make a specialty of rebuilding wrecked cars
to a finished Product

Glass Replacement

Top Repairing

AND

Refinishing in factory process

Lacquer Finish

Our Equipment Will Assure A No. 1 Service

Portage Novelty Boat & Storage Co.

Portage, Wisconsin

A. L. Voertman

Phone 36

W. M. Horton

Riverview Complete Tourist Service

HOTEL HELLAND

The European Plan Hotel at The Dells. Nearest to everything. Rooms with private bath. Riverview Free Auto Park in connection. Rates \$1.50 to \$2.50 per person.

RIVERVIEW BOAT LINE

Eight new 50-passenger motor boats. Upper and Lower Dells River Trips. Boats every 30 minutes. Free auto storage at Riverview Dells Garage during river trips.

RIVERVIEW DELLS GARAGE

Across street from boat landings. Complete garage service. Free auto storage Riverview Boat Line patrons during river trips.

BADGER RESTAURANT

The prettiest and most unique restaurant between Milwaukee and St. Paul. Equipment, appointments, and cuisine unexcelled. Rest room and gift shop in connection.

SPRING HILL COTTAGES

On U. S. Highway 16, Lower Dells. Motor connections to Riverview Service. Garage. Cottages with bath. Rates \$1.00 to \$2.25 per person, European Plan.

RIVERVIEW FREE CAMPING GROUNDS

Fifty-seven acres beautiful woodland on river. Modern conveniences. Attendant in charge. Riverview Boat Landing.

RIVERVIEW OPEN AIR DANCING PAVILION

Best music and floor. Ten cents per dance. Dells amusement center.

STANTON'S SWEET SHOP AND LUNCHEONETTE

Appointments and service to appeal to the most fastidious. Visitors' Register. Accurate road information.

STANTON'S CURIO SHOPS

Complete line of Curios and Dells Souvenirs, Films, Post Cards, Road Maps, etc.

RIVERVIEW PUBLIC COMFORT STATION

Rest rooms. Information Bureau. Public phones. Free tables for lunches.

THE INDIAN SHOP

Indian Curios, Moccasins, Beadwork, Basketry, etc. Genuine Navajo Rugs.

The Home of
Richelieu Products
and
Gold Bond Coffee



K. & F. DEPT. STORE

Kilbourn, Wisconsin

We Aim To Please



MILK builds bone and muscle in growing children, supplying needed lime and butter fat for which there is no substitute. See to it that your children drink plenty of milk during the Fall and winter months. School children need plenty of energy building foods during these months. Their work is as exacting and as wearing on the body as daily labors are to parents.

If you have never tried Martiny Guernsey dairy milk you haven't yet had the best. Our milk is delivered fresh a few hours after milking—and from our modern sanitary dairy—there is none better.

Stop our wagon and we will do the rest

MARTINY DAIRY

MARACHOWSKY'S



Portage

Mauston



**It Will Pay You To Buy
Everything Here**

Fraternity, College

AND

Class Jewellery

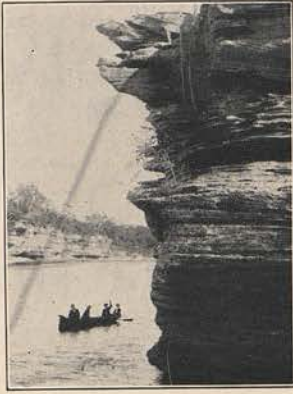
Commencement Announcements and Invitations

Jeweler to the Junior Class and
Stationer to the Senior Class
of Kilbourn High School

L. G. Balfour Company

Manufacturing Jewelers and Stationers
Attleboro, Mass.

Ask Any College Greek



*Dawn
Manor ~*

Recreation Center of the
DELLS

Lake Frontage

River Frontage

W. J. NEWMAN, Promoter

Eat

Kilbourn Ice Cream



Any Kind at Anytime
None Better



T. CRIST, Prop.

Kilbourn, Wisconsin



Beaver Building, Kilbourn, Wisconsin

A new building at Kilbourn, but an old established organization back of every promise
All forms of insurance for every member of the family. More than \$3,750,000.00 paid
in benefits. Resources \$2,500,000.00. 44,000 policy holders. \$36,000,000
insurance in force. We have a representative in Kilbourn

Compliments of
DANA CHAMPLIN, Distributor
for the
Central Wisconsin Creamery Co.
Manufacturers of
Perfectly Pasteurized Dairy Products
Ice Cream, Butter, Cream, Milk, Cottage Cheese

HOPPE

LEADING CLOTHIER

*Baraboo
and
Kilbourn*

965
Stores
in
44
States

A NATION-WIDE
INSTITUTION-
J.C. PENNEY CO.
"where savings are greatest"
PORTAGE, WISCONSIN

Every
Day
is
Value
Day
Here

No So-Called "Sales", But Equal Treatment Every Day

We never hold so-called "sales" of any kind nor do we name comparative prices.

We always sell our goods at the lowest possible price consistent with prevailing market conditions.

When we mark down some article of merchandise to its replacement value, the former price is forgotten.

It is obvious enough that we never mark UP a price!

Our aim is to serve well all the time with fair, equal treatment alike to everybody.

J.C. Penney Co.

Hansen-Snider Lumber Co.

Kilbourn, Wisconsin



EVERYTHING TO
BUILD ANYTHING

Phone No. 20

When You Come to Baraboo

Your Trip is not Complete
Without a Visit to

Risley Brothers

This store's resources are at your service.

Tell us your needs and we will
endeavor to supply them
quickly

A. C. Dixon & Son

Kilbourn, Wisconsin

Dry Goods, Shoes, Men's Furnishings
and Ladies' Ready-to-Wear

Headquarters for

Jantzen and Spaulding Swimming Suits

Buy the Best at Popular Prices

BE IN THE SWIM

DRUGS

-

-

SODAS

Stuelke's Drug Store

M. H. Stuelke, Prescription Druggist

Kilbourn, Wisconsin

CIGARS

-

-

CANDIES

F. A. FIELD & SON

Kilbourn, Wisconsin

Lumber - Coal
Building Material

Phone 139

GRAY'S GROCERY and MEAT MARKET

Member of the

Quality



Service

Choice Meats

Phone 14

KILBOURN, WISCONSIN

Kilbourn Service Station

Roy Murray, Prop.

Gasoline - Oils - Greases

Day and Night
Service

Kilbourn, - Wisconsin

Service Print Shop

712 Superior Street



Printers of
Folders, Catalogs
and
Fine Stationery



OFFICE
SUPPLIES

ROEKER

The Baker

ARTHUR ROEKER, Proprietor

Kilbourn, Wisconsin

**FRESH BREADS
and PASTRY**

Confectionery
and Candies

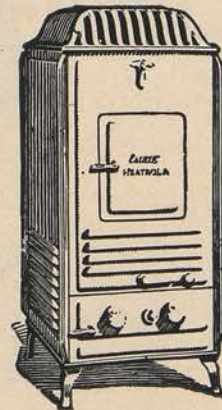
PHONE 114

Fedderly & Kimball

Hardware, Furniture
and Undertaking

Kilbourn, Wisconsin

*Maytag Washers
Monarch Ranges
Heatrola Heaters*



Johnson's Electric Store

K. K. Johnson, Prop.
Kilbourn, Wisconsin

Electric Contracting
Radios and Electric Goods

Phone 296

McClyman Hardware Co.
Kilbourn, Wisconsin

General Hardware

Stoves, Ranges, Cutlery, Paints, Oils



Patronize

The Rexall Drug Store

Kodaks and Films
Printing and Developing

Bauer & O'Neil

Broadway Kilbourn, Wisconsin

Barber Shop

Good Experienced Workmen

Ladies' Haircutting and Shampooing
Shower Baths

Next To Bank On Oak Street

DICK BULLIS, Prop.
Kilbourn, Wisconsin

Carroll & Klug

Portage, Wisconsin

A Store for Men

A Store for Women

Satisfying to Either
Gratifying to Both

Dry Goods and Clothing

High Grade Tailoring
For Men

At Moderate Prices

The H. H. Bennett Studio

Kilbourn, Wisconsin

Publishers of Photographs of

THE DELLS

Of Wisconsin River

and Dealer in

Souvenirs, Postal Cards and
Indian Relics

Carl Williams

Painting - Paperhanging - Decorating
Signs

733 Superior St.

Phone 240W

Deep Rock Oil Co.

of Kilbourn

Baggot and Howley, Agents

Kilbourn, Wisconsin

Cor. Broadway and Oak

Phone 70

**Kilbourn
Co-operative
Exchange**



**Everything in
Farm Produce**



**Always on the Job
To Serve and
Satisfy**

**There Is Beauty for You
in the Fitch Shampoo**



Haircutting - Shampooing
Massageing

Ladies Hair Bobbing in the most
Expert Manner

Sanitary Barber Shop

743 Superior St.

Albert Jimson

Fred T. Grieger

This Space Taken by
Graham Bros. Pool Hall
and
Photo-Craft Shop

**Kilbourn
Garage**

Ford

Tires and Batteries

Phone 202

Kilbourn, Wisconsin

**The
Milwaukee Journal
and
Wisconsin News**



**Chicago Tribune
and
Herald Examiner**



MARSTON
News Stand

J. M. Drollinger

Kilbourn, Wisconsin

**Saddlery and
Shoes**

**SHOE
REPAIRING**

Norman E. Van Dyke
Real Estate Agency

Specialty:

Dells and Lake Frontage
Properties and Farm
Lands

Secure Booklets and
Price Lists

Dr. R. D. Boynton

Physician and Surgeon

Over Post Office

Office phone 60 - Res. phone 256

Alvin Thomas



Plumbing and Heating



Phone 203

Kilbourn, Wisconsin

For the spread on your bread try

“The Dells Brand Creamery Butter”

manufactured by the Kilbourn Co-
operative Creamery Company. The
most sanitary creamery in the state
at Kilbourn, Wisconsin

Schweda Hardware

Stoves, Sporting Goods, Paints,
Oils, Etc.

713 Oak Street - Phone 362
Kilbourn, Wisconsin

Murrills & Taylor

Furniture

Portage, Wisconsin

J. F. Dougherty "1899"

Atty. at Law

Kilbourn, Wisconsin

Dr. F. F. Field

Dental Parlors

Phone 224

Dr H. Bibby

Dental Surgeon

Phone 74

Dr. B. J. Thompson

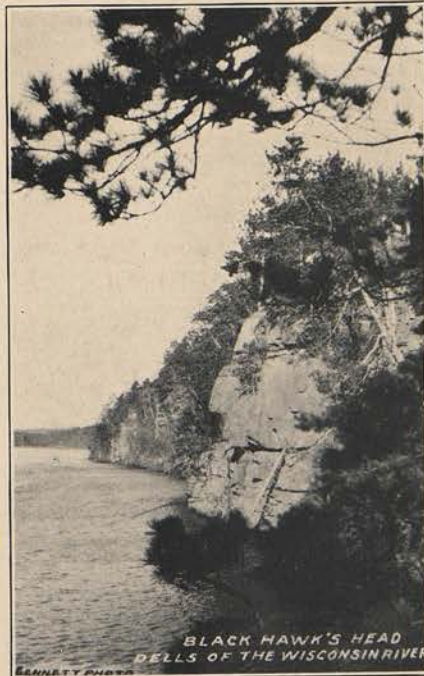
Dentist



The cover for
this annual
was created by
The DAVID J.
MOLLOY CO.
2857 N. Western Avenue
Chicago, Illinois


Every Molloy Made
Cover bears this
trade mark on the
back lid.

Farmers
Inter-County
Mutual Telephone Co.
Long Distance Service





AUTOGRAPHS





AUTOGRAPHS





AUTOGRAPHS





AUTOGRAPHS



